



## SPOKANE INTERNATIONAL AIRPORT MONTHLY TRAFFIC REPORT JANUARY 2016

	JANUARY				YEAR TO DATE			
	2016	2015	Increase (Decrease)	Percent Difference	2016	2015	Increase (Decrease)	Percent Difference
<b>MAJOR AIRLINES:</b>								
Passengers								
Enplaned	89,379	80,011	9,368	11.71%	89,379	80,011	9,368	11.71%
Deplaned	88,687	77,830	10,857	13.95%	88,687	77,830	10,857	13.95%
Sub-total	178,066	157,841	20,225	12.81%	178,066	157,841	20,225	12.81%
<b>REGIONAL AIRLINES:</b>								
Passengers								
Enplaned	26,161	33,357	(7,196)	-21.57%	26,161	33,357	(7,196)	-21.57%
Deplaned	26,349	34,587	(8,238)	-23.82%	26,349	34,587	(8,238)	-23.82%
Sub-total	52,510	67,944	(15,434)	-22.72%	52,510	67,944	(15,434)	-22.72%
<b>TOTAL PASSENGERS</b>	<b>230,576</b>	<b>225,785</b>	<b>4,791</b>	<b>2.12%</b>	<b>230,576</b>	<b>225,785</b>	<b>4,791</b>	<b>2.12%</b>
<b>CARGO: Enplaned</b>	<b>4,153,988.70</b>	<b>4,387,388.00</b>	<b>(233,399)</b>	<b>-5.32%</b>	<b>4,151,988.70</b>	<b>4,387,388.00</b>	<b>(235,399)</b>	<b>-5.37%</b>
<b>Deplaned</b>	<b>6,145,878.30</b>	<b>6,398,741.00</b>	<b>(252,863)</b>	<b>-3.95%</b>	<b>6,145,878.30</b>	<b>6,398,741.00</b>	<b>(252,863)</b>	<b>-3.95%</b>
<b>TOTAL CARGO (in Pounds)</b>	<b>10,299,867.00</b>	<b>10,786,129.00</b>	<b>(486,262)</b>	<b>-4.51%</b>	<b>10,297,867.00</b>	<b>10,786,129.00</b>	<b>(488,262)</b>	<b>-4.53%</b>

Passenger activity reported by individual airlines

### MONTHLY AIRCRAFT ACTIVITY

	JANUARY				YEAR TO DATE			
	2016	2015	Increase (Decrease)	Percent Difference	2016	2015	Increase (Decrease)	Percent Difference
Major Airlines	2,896	3,044	(148)	-4.86%	2,896	3,044	(148)	-4.86%
Regional Airlines	515	472	43	9.11%	515	472	43	9.11%
General Aviation	539	483	56	11.59%	539	483	56	11.59%
Military	52	29	23	79.31%	52	29	23	79.31%
<i>Total Itinerant</i>	<i>4,002</i>	<i>4,028</i>	<i>(26)</i>	<i>-0.65%</i>	<i>4,002</i>	<i>4,028</i>	<i>(26)</i>	<i>-0.65%</i>
<i>Total Local</i>	<i>328</i>	<i>152</i>	<i>176</i>	<i>115.79%</i>	<i>328</i>	<i>152</i>	<i>176</i>	<i>115.79%</i>
<b>TOTAL OPERATIONS</b>	<b>4,330</b>	<b>4,180</b>	<b>150</b>	<b>3.59%</b>	<b>4,330</b>	<b>4,180</b>	<b>150</b>	<b>3.59%</b>

Operations activity is reported by the FEDERAL AVIATION ADMINISTRATION

	2016	2015	Increase (Decrease)	Percent Difference	2016	2015	Increase (Decrease)	Percent Difference
Felts Field Operations Total	1,855	2,309	(454)	-19.66%	1,855	2,309	(454)	-19.66%

Operations activity is reported by the FEDERAL AVIATION ADMINISTRATION



# SPOKANE INTERNATIONAL AIRPORT MONTHLY TRAFFIC REPORT AIRLINE PASSENGER STATISTICS JANUARY 2016

Airline	JANUARY ENPLANEMENT DATA				JANUARY DEPLANEMENT DATA			
	2016	2015	Diff	% change	2016	2015	Diff	% change
Alaska	27,456	18,993	8,463	44.56%	26,398	16,478	9,920	60.20%
American*	4,037	4,201	(164)	-3.90%	3,849	4,094	(245)	-5.98%
Delta	25,146	22,113	3,033	13.72%	25,284	22,607	2,677	11.84%
Horizon	26,161	33,357	(7,196)	-21.57%	26,349	34,587	(8,238)	-23.82%
Southwest	25,235	26,133	(898)	-3.44%	25,415	25,718	(303)	-1.18%
United Airlines	7,320	7,990	(670)	-8.39%	7,557	8,191	(634)	-7.74%
Other	-	545	(545)	100%	-	490	(490)	100.00%
Charters	185	36	149	0.00%	184	252	(68)	100.00%
<b>Total Passengers</b>	<b>115,540</b>	<b>113,368</b>	<b>2,172</b>	<b>1.92%</b>	<b>115,036</b>	<b>112,417</b>	<b>2,619</b>	<b>2.33%</b>

Passenger activity reported by individual airlines

\* U. S. Airways was purchased by American Airlines and is reported under American Airlines going forward.

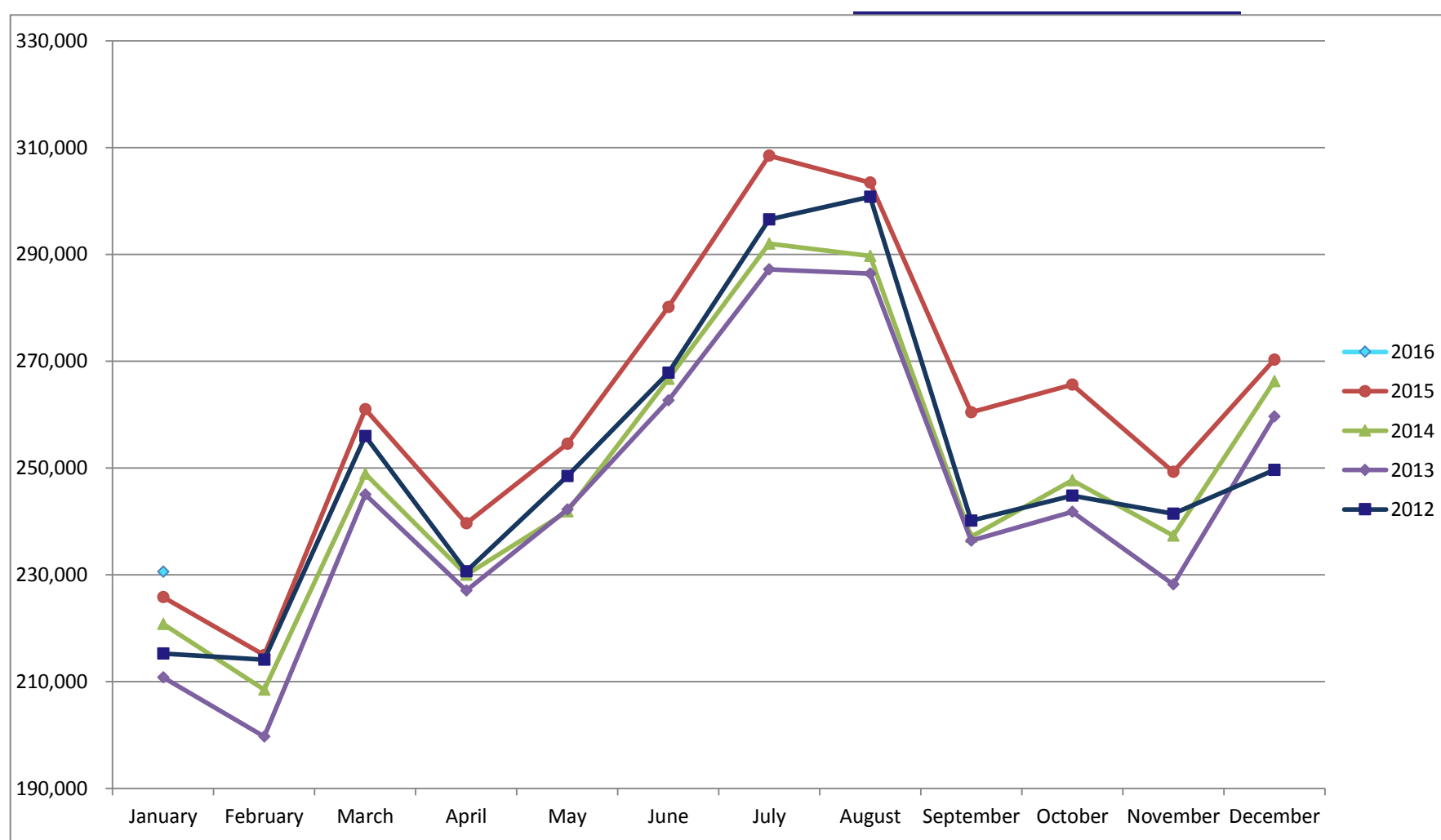
Total Passengers for JANUARY 2016	230,576
Total Passengers for JANUARY 2015	225,785
% Change Versus JANUARY 2015	2.12%



# SPOKANE INTERNATIONAL AIRPORT MONTHLY TRAFFIC REPORT JANUARY 2016 TOTAL PASSENGER TRAFFIC COMPARISON

	2016	Percent difference	2015	2014	2013	2012
January	230,576	2.12%	225,785	220,737	210,770	215,209
February			214,933	208,435	199,694	214,092
March			260,984	248,904	245,021	255,948
April			239,603	229,989	227,005	230,609
May			254,499	241,870	242,208	248,503
June			280,098	266,701	262,638	267,849
July			308,500	292,025	287,204	296,393
August			303,403	289,713	286,417	300,775
September			260,439	237,078	236,363	240,131
October			265,563	247,679	241,776	244,804
November			249,256	237,296	228,168	241,381
December			270,279	266,225	259,594	249,621
<b>Total Passengers YTD</b>	<b>230,576</b>	<b>2.12%</b>	<b>225,785</b>	<b>220,737</b>	<b>210,770</b>	<b>215,209</b>

## COMPARISON OF TOTAL PASSENGERS



Passenger activity reported by individual airlines