



SPOKANE INTERNATIONAL AIRPORT MONTHLY TRAFFIC REPORT MARCH 2016

	MARCH				YEAR TO DATE			
	2016	2015	Increase (Decrease)	Percent Difference	2016	2015	Increase (Decrease)	Percent Difference
MAJOR AIRLINES:								
Passengers								
Enplaned	98,505	98,019	486	0.50%	269,653	254,127	15,526	6.11%
Deplaned	95,727	94,922	805	0.85%	266,339	247,504	18,835	7.61%
Sub-total	194,232	192,941	1,291	0.67%	535,992	501,631	34,361	6.85%
REGIONAL AIRLINES:								
Passengers								
Enplaned	28,237	33,290	(5,053)	-15.18%	82,635	98,242	(15,607)	-15.89%
Deplaned	28,412	34,753	(6,341)	-18.25%	83,173	101,829	(18,656)	-18.32%
Sub-total	56,649	68,043	(11,394)	-16.75%	165,808	200,071	(34,263)	-17.13%
TOTAL PASSENGERS	250,881	260,984	(10,103)	-3.87%	701,800	701,702	98	0.01%
CARGO: Enplaned	4,866,094.90	4,296,400.00	569,695	13.26%	12,985,034.90	12,697,060.00	287,975	2.27%
Deplaned	7,130,920.30	6,605,120.00	525,800	7.96%	19,264,085.60	18,965,420.00	298,666	1.57%
TOTAL CARGO (in Pounds)	11,997,015.20	10,901,520.00	1,095,495	10.05%	32,249,120.50	31,662,480.00	586,641	1.85%

Passenger activity reported by individual airlines

MONTHLY AIRCRAFT ACTIVITY

	MARCH				YEAR TO DATE			
	2016	2015	Increase (Decrease)	Percent Difference	2016	2015	Increase (Decrease)	Percent Difference
Major Airlines	3,305	3,172	133	4.19%	8,927	8,998	(71)	-0.79%
Regional Airlines	635	533	102	19.14%	1,760	1,499	261	17.41%
General Aviation	1,085	1,021	64	6.27%	2,440	2,310	130	5.63%
Military	199	115	84	73.04%	338	235	103	43.83%
<i>Total Itinerant</i>	5,224	4,841	383	7.91%	13,465	13,042	423	3.24%
<i>Total Local</i>	818	594	224	37.71%	1,770	1,098	672	61.20%
TOTAL OPERATIONS	6,042	5,435	607	11.17%	15,235	14,140	1,095	7.74%

Operations activity is reported by the FEDERAL AVIATION ADMINISTRATION

	2016	2015	Increase (Decrease)	Percent Difference	2016	2015	Increase (Decrease)	Percent Difference
Felts Field Operations Total	2,859	4,810	(1,951)	-40.56%	8,142	10,484	(2,342)	-22.34%

Operations activity is reported by the FEDERAL AVIATION ADMINISTRATION



**SPOKANE INTERNATIONAL AIRPORT
MONTHLY TRAFFIC REPORT
AIRLINE PASSENGER STATISTICS
MARCH 2016**

Airline	MARCH ENPLANEMENT DATA				MARCH DEPLANEMENT DATA			
	2016	2015	Diff	% change	2016	2015	Diff	% change
Alaska	22,566	21,083	1,483	7.03%	21,447	19,321	2,126	11.00%
American*	3,870	6,465	(2,595)	-40.14%	3,816	6,134	(2,318)	-37.79%
Delta	30,710	30,022	688	2.29%	30,191	29,178	1,013	3.47%
Horizon	28,237	33,290	(5,053)	-15.18%	28,412	34,753	(6,341)	-18.25%
Southwest	32,835	31,312	1,523	4.86%	31,908	30,438	1,470	4.83%
United Airlines	7,743	8,762	(1,019)	-11.63%	7,485	9,088	(1,603)	-17.64%
Other	-	-	-	100%	-	-	-	100.00%
Charters	781	375	406	0.00%	880	763	117	100.00%
Total Passengers	126,742	131,309	(4,567)	-3.48%	124,139	129,675	(5,536)	-4.27%

Passenger activity reported by individual airlines

* U. S. Airways was purchased by American Airlines and is reported under American Airlines going forward.

Total Passengers for MARCH 2016	250,881
Total Passengers for MARCH 2015	260,984
% Change Versus MARCH 2015	-3.87%

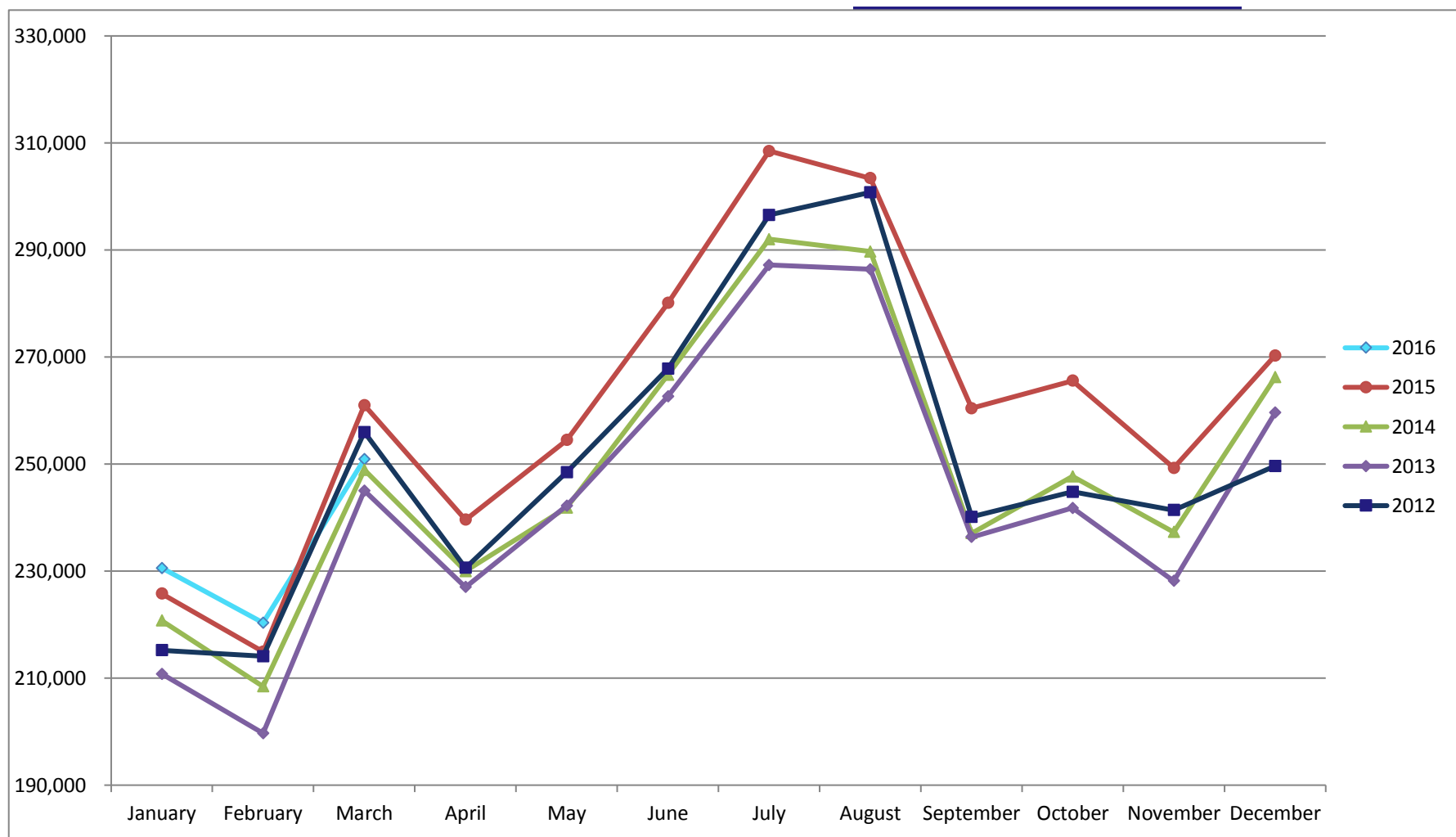


SPOKANE INTERNATIONAL AIRPORT MONTHLY TRAFFIC REPORT MARCH 2016

TOTAL PASSENGER TRAFFIC COMPARISON

	2016	Percent difference	2015	2014	2013	2012
January	230,576	2.12%	225,785	220,737	210,770	215,209
February	220,343	2.52%	214,933	208,435	199,694	214,092
March	250,881	-3.87%	260,984	248,904	245,021	255,948
April			239,603	229,989	227,005	230,609
May			254,499	241,870	242,208	248,503
June			280,098	266,701	262,638	267,849
July			308,500	292,025	287,204	296,393
August			303,403	289,713	286,417	300,775
September			260,439	237,078	236,363	240,131
October			265,563	247,679	241,776	244,804
November			249,256	237,296	228,168	241,381
December			270,279	266,225	259,594	249,621
Total Passengers YTD	701,800	0.01%	701,702	678,076	655,485	685,249

COMPARISON OF TOTAL PASSENGERS



Passenger activity reported by individual airlines