



SPOKANE INTERNATIONAL AIRPORT
MONTHLY TRAFFIC REPORT
APRIL 2017

	APRIL				YEAR TO DATE			
	2017	2016	Increase (Decrease)	Percent Difference	2017	2016	Increase (Decrease)	Percent Difference
MAJOR AIRLINES:								
Passengers								
Enplaned	91,491	84,637	6,854	8.10%	366,228	354,290	11,938	3.37%
Deplaned	95,891	89,310	6,581	7.37%	359,954	355,649	4,305	1.21%
Sub-total	187,382	173,947	13,435	7.72%	726,182	709,939	16,243	2.29%
REGIONAL AIRLINES:								
Passengers								
Enplaned	37,298	37,714	(416)	-1.10%	149,732	120,349	29,383	24.41%
Deplaned	38,783	40,294	(1,511)	-3.75%	155,172	123,467	31,705	25.68%
Sub-total	76,081	78,008	(1,927)	-2.47%	304,904	243,816	61,088	25.05%
TOTAL PASSENGERS	263,463	251,955	11,508	4.57%	1,031,086	953,755	77,331	8.11%
CARGO: Enplaned	4,604,250.00	4,350,678.00	253,572	5.83%	19,033,805.00	17,258,797.00	1,775,008	10.28%
Deplaned	6,269,188.00	6,342,525.00	(73,337)	-1.16%	26,557,882.00	25,635,296.00	922,586	3.60%
TOTAL CARGO (in Pounds)	10,873,438.00	10,693,203.00	180,235	1.69%	45,591,687.00	42,894,092.00	2,697,594	6.29%
Passenger activity reported by individual airlines								



**SPOKANE INTERNATIONAL AIRPORT
MONTHLY TRAFFIC REPORT
AIRLINE PASSENGER STATISTICS
APRIL 2017**

Airline	APRIL ENPLANEMENT DATA				APRIL DEPLANEMENT DATA			
	2017	2016	Diff	% change	2017	2016	Diff	% change
Alaska	16,337	16,153	184	1.14%	16,846	17,604	(758)	-4.31%
American*	6,202	3,556	2,646	74.41%	7,188	3,718	3,470	93.33%
Delta	29,914	27,760	2,154	7.76%	31,236	29,045	2,191	7.54%
Horizon	37,298	37,714	(416)	-1.10%	38,783	40,294	(1,511)	-3.75%
Southwest	30,290	29,427	863	2.93%	31,591	31,055	536	1.73%
United Airlines	8,380	7,405	975	13.17%	8,662	7,555	1,107	14.65%
Other	-	-	-	100%	-	-	-	100.00%
Charters	368	336	32	0.00%	368	333	35	100.00%
Total Passengers	128,789	122,351	6,438	5.26%	134,674	129,604	5,070	3.91%

Passenger activity reported by individual airlines

* U. S. Airways was purchased by American Airlines and is reported under American Airlines going forward.

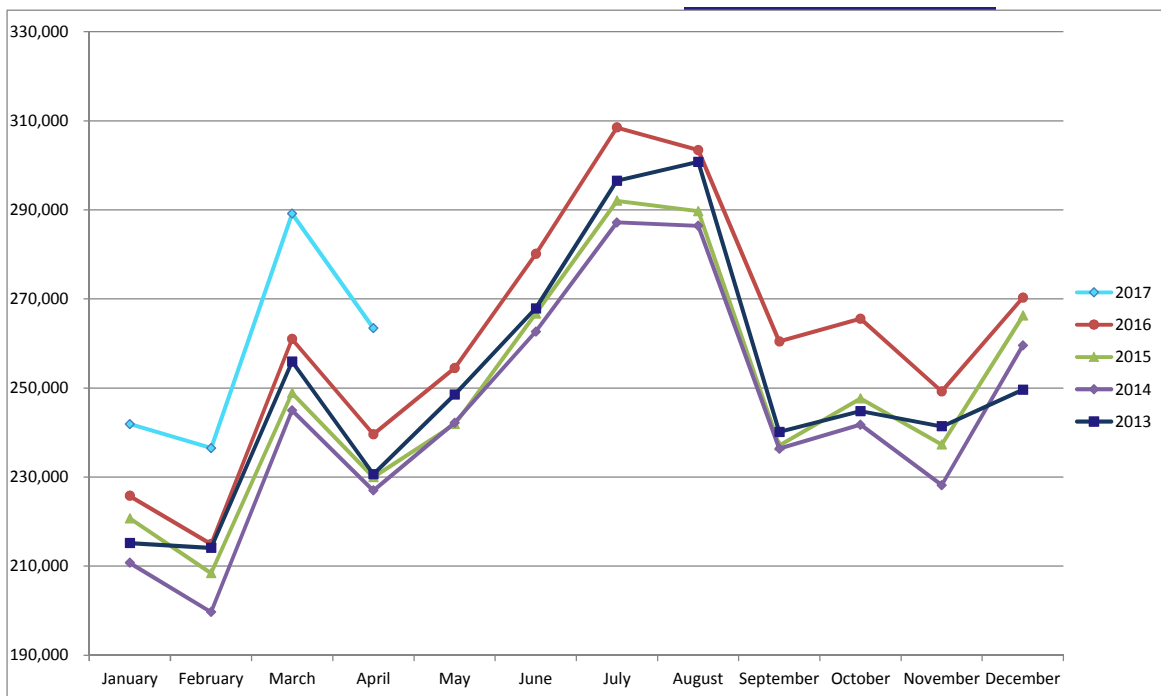
Total Passengers for APRIL 2017	263,463
Total Passengers for APRIL 2016	251,955
% Change Versus APRIL 2016	4.57%



**SPOKANE INTERNATIONAL AIRPORT
MONTHLY TRAFFIC REPORT
APRIL 2017
TOTAL PASSENGER TRAFFIC COMPARISON**

	2017	Percent difference	2016	2015	2014	2013
January	241,898	4.91%	230,576	225,785	220,737	210,770
February	236,534	7.35%	220,343	214,933	208,435	199,694
March	289,191	15.27%	250,881	260,984	248,904	245,021
April	263,463	4.57%	251,955	239,603	229,989	227,005
May			263,144	254,499	241,870	242,208
June			294,561	280,098	266,701	262,638
July			311,274	308,500	292,025	287,204
August			313,002	303,403	289,713	286,417
September			272,675	260,439	237,078	236,363
October			272,060	265,563	247,679	241,776
November			273,663	249,256	237,296	228,168
December			279,961	270,279	266,225	259,594
Total Passengers YTD	1,031,086	8.11%	953,755	701,702	678,076	655,485

COMPARISON OF TOTAL PASSENGERS



Passenger activity reported by individual airlines