



SPOKANE INTERNATIONAL AIRPORT MONTHLY TRAFFIC REPORT OCTOBER 2016

	OCTOBER				YEAR TO DATE			
	2016	2015	Increase (Decrease)	Percent Difference	2016	2015	Increase (Decrease)	Percent Difference
MAJOR AIRLINES:								
Passengers								
Enplaned	93,814	94,561	(747)	-0.79%	1,055,779	947,101	108,678	11.47%
Deplaned	90,725	92,867	(2,142)	-2.31%	958,473	935,579	22,894	2.45%
Sub-total	184,539	187,428	(2,889)	-1.54%	2,014,252	1,882,680	131,572	6.99%
REGIONAL AIRLINES:								
Passengers								
Enplaned	43,421	38,752	4,669	12.05%	415,465	357,926	57,539	16.08%
Deplaned	44,100	39,383	4,717	11.98%	427,091	373,201	53,890	14.44%
Sub-total	87,521	78,135	9,386	12.01%	842,556	731,127	111,429	15.24%
TOTAL PASSENGERS	272,060	265,563	6,497	2.45%	2,856,808	2,613,807	243,001	9.30%
CARGO: Enplaned	4,630,526.00	4,938,716.00	(308,190)	-6.24%	44,504,250.00	44,016,467.00	487,783	1.11%
 Deplaned	6,326,526.00	6,902,270.00	(575,744)	-8.34%	64,375,075.00	64,154,949.60	220,125	0.34%
*TOTAL CARGO (in Pounds)	10,957,052.00	11,840,986.00	(883,934)	-7.47%	108,879,325.00	108,171,416.60	707,908	0.65%

Passenger activity reported by individual airlines

MONTHLY AIRCRAFT ACTIVITY

	OCTOBER				YEAR TO DATE			
	2016	2015	Increase (Decrease)	Percent Difference	2016	2015	Increase (Decrease)	Percent Difference
Major Airlines	3,452	3,308	144	4.35%	32,976	31,891	1,085	3.40%
Regional Airlines	490	618	(128)	-20.71%	5,544	5,613	(69)	-1.23%
General Aviation	575	1,032	(457)	-44.28%	8,410	10,500	(2,090)	-19.90%
Military	37	80	(43)	-53.75%	932	972	(40)	-4.12%
Total Itinerant	4,554	5,038	(484)	-9.61%	47,862	48,976	(1,114)	-2.27%
Total Local	440	894	(454)	-50.78%	4,404	6,108	(1,704)	-27.90%
TOTAL OPERATIONS	4,994	5,932	(938)	-15.81%	52,266	55,084	(2,818)	-5.12%

Operations activity is reported by the FEDERAL AVIATION ADMINISTRATION

	2016	2015	Increase (Decrease)	Percent Difference	2016	2015	Increase (Decrease)	Percent Difference
Felts Field Operations Total	3,982	3,857	125	3.24%	46,535	46,360	175	0.38%

Operations activity is reported by the FEDERAL AVIATION ADMINISTRATION



SPOKANE INTERNATIONAL AIRPORT MONTHLY TRAFFIC REPORT AIRLINE PASSENGER STATISTICS OCTOBER 2016

Airline	OCTOBER ENPLANEMENT DATA				OCTOBER DEPLANEMENT DATA			
	2016	2015	Diff	% change	2016	2015	Diff	% change
Alaska	15,546	18,395	(2,849)	-15.49%	13,441	17,805	(4,364)	-24.51%
American*	3,959	6,477	(2,518)	-38.88%	3,857	6,131	(2,274)	-37.09%
Delta	32,747	29,877	2,870	9.61%	32,671	29,751	2,920	9.81%
Horizon	43,421	38,752	4,669	12.05%	44,100	39,383	4,717	11.98%
Southwest	31,134	30,297	837	2.76%	30,331	29,752	579	1.95%
United Airlines	9,647	9,290	357	3.84%	9,754	9,268	486	5.24%
Other	-	-	-	0.00%	-	-	-	0.00%
Charters	781	225	556	100.00%	671	160	511	100.00%
Total Passengers	137,235	133,313	3,922	2.94%	134,825	132,250	2,575	1.95%

Passenger activity reported by individual airlines

* U. S. Airways was purchased by American Airlines and is reported under American Airlines going forward.

Total Passengers for OCTOBER 2016	272,060
Total Passengers for OCTOBER 2015	265,563
% Change Versus OCTOBER 2015	2.45%

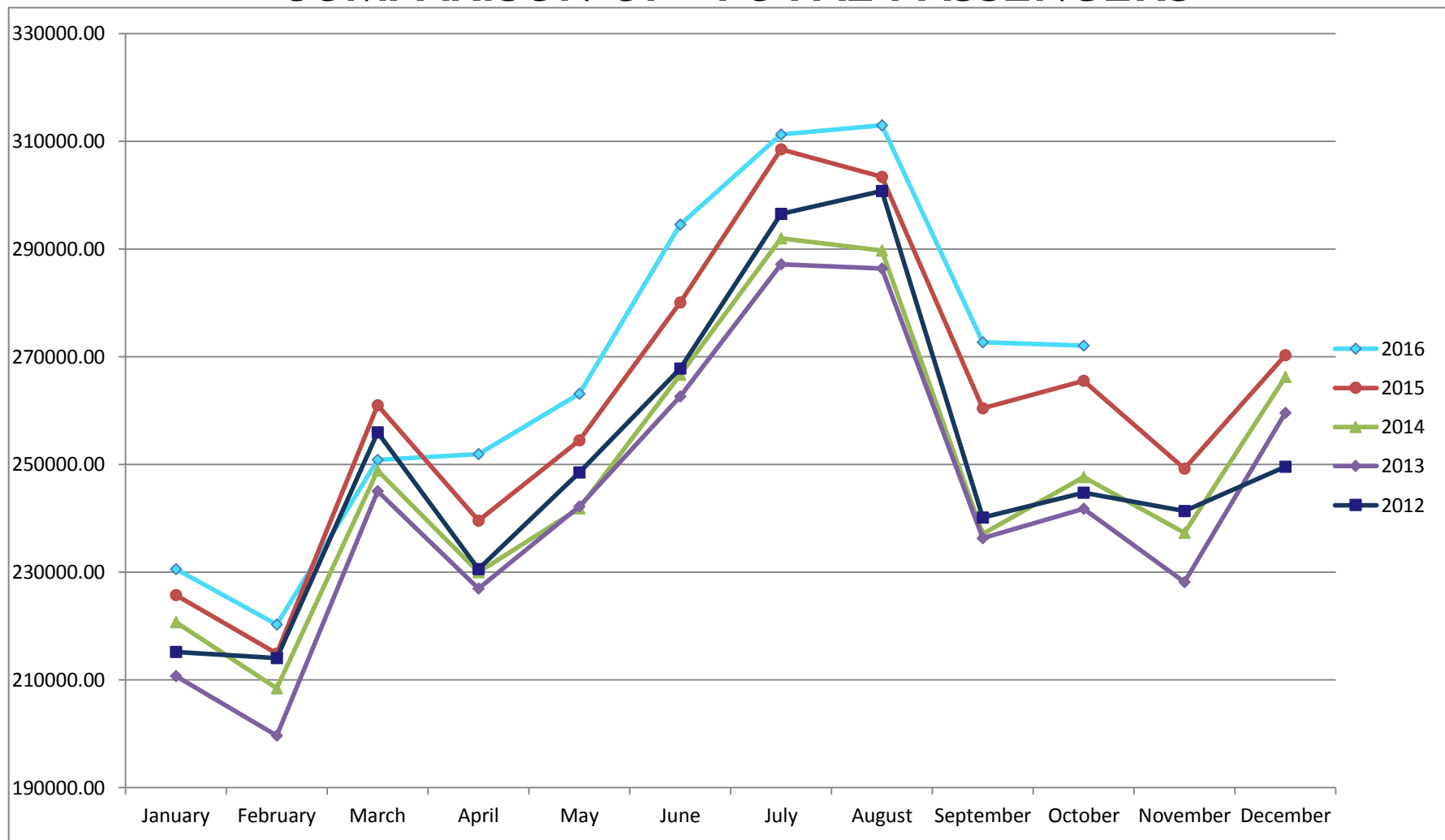


SPOKANE INTERNATIONAL AIRPORT MONTHLY TRAFFIC REPORT OCTOBER 2016

TOTAL PASSENGER TRAFFIC COMPARISON

	2016	Percent difference	2015	2014	2013	2012
January	230,576	2.12%	225,785	220,737	210,770	215,209
February	220,343	2.52%	214,933	208,435	199,694	214,092
March	250,881	-3.87%	260,984	248,904	245,021	255,948
April	251,955	5.16%	239,603	229,989	227,005	230,609
May	263,144	3.40%	254,499	241,870	242,208	248,503
June	294,561	5.16%	280,098	266,701	262,638	267,849
July	311,274	0.90%	308,500	292,025	287,204	296,393
August	313,002	3.16%	303,403	289,713	286,417	300,775
September	272,675	4.70%	260,439	237,078	236,363	240,131
October	272,060	2.45%	265,563	247,679	241,776	244,804
November			249,256	237,296	228,168	241,381
December			270,279	266,225	259,594	249,621
Total Passengers YTD	2,680,471	2.55%	2,613,807	2,483,131	2,439,096	2,514,313

COMPARISON OF TOTAL PASSENGERS



Passenger activity reported by individual airlines