



## SPOKANE INTERNATIONAL AIRPORT MONTHLY TRAFFIC REPORT NOVEMBER 2016

	NOVEMBER				YEAR TO DATE			
	2016	2015	Increase (Decrease)	Percent Difference	2016	2015	Increase (Decrease)	Percent Difference
<b>MAJOR AIRLINES:</b>								
Passengers								
Enplaned	91,601	89,947	1,654	1.84%	1,055,779	1,037,048	18,731	1.81%
Deplaned	97,326	87,002	10,324	11.87%	1,055,799	1,022,581	33,218	3.25%
Sub-total	188,927	176,949	11,978	6.77%	2,111,578	2,059,629	51,949	2.52%
<b>REGIONAL AIRLINES:</b>								
Passengers								
Enplaned	41,519	35,139	6,380	18.16%	415,465	393,065	22,400	5.70%
Deplaned	43,217	37,168	6,049	16.27%	427,091	410,369	16,722	4.07%
Sub-total	84,736	72,307	12,429	17.19%	842,556	803,434	39,122	4.87%
<b>TOTAL PASSENGERS</b>	<b>273,663</b>	<b>249,256</b>	<b>24,407</b>	<b>9.79%</b>	<b>2,954,134</b>	<b>2,863,063</b>	<b>91,071</b>	<b>3.18%</b>
<b>CARGO:</b>								
Enplaned	4,709,131.00	3,971,337.00	737,794	18.58%	49,213,382.00	47,998,515.00	1,214,867	2.53%
Deplaned	6,612,752.00	6,216,244.00	396,508	6.38%	70,987,827.00	70,394,158.05	593,669	0.84%
<b>*TOTAL CARGO (in Pounds)</b>	<b>11,321,883.00</b>	<b>10,187,581.00</b>	<b>1,134,302</b>	<b>11.13%</b>	<b>120,201,209.00</b>	<b>118,392,673.05</b>	<b>1,808,536</b>	<b>1.53%</b>

Passenger activity reported by individual airlines

### MONTHLY AIRCRAFT ACTIVITY

	NOVEMBER				YEAR TO DATE			
	2016	2015	Increase (Decrease)	Percent Difference	2016	2015	Increase (Decrease)	Percent Difference
Major Airlines	3,306	3,070	236	7.69%	36,282	34,961	1,321	3.78%
Regional Airlines	599	570	29	5.09%	6,143	6,183	(40)	-0.65%
General Aviation	511	738	(227)	-30.76%	8,921	11,238	(2,317)	-20.62%
Military	70	121	(51)	-42.15%	1,002	1,093	(91)	-8.33%
<b>Total Itinerant</b>	<b>4,486</b>	<b>4,499</b>	<b>(13)</b>	<b>-0.29%</b>	<b>52,348</b>	<b>53,475</b>	<b>(1,127)</b>	<b>-2.11%</b>
<b>Total Local</b>	<b>473</b>	<b>476</b>	<b>(3)</b>	<b>-0.63%</b>	<b>4,877</b>	<b>6,584</b>	<b>(1,707)</b>	<b>-25.93%</b>
<b>TOTAL OPERATIONS</b>	<b>4,959</b>	<b>4,975</b>	<b>(16)</b>	<b>-0.32%</b>	<b>57,225</b>	<b>60,059</b>	<b>(2,834)</b>	<b>-4.72%</b>

Operations activity is reported by the FEDERAL AVIATION ADMINISTRATION

	2016	2015	Increase (Decrease)	Percent Difference	2016	2015	Increase (Decrease)	Percent Difference
Felts Field Operations Total	4,721	2,699	2,022	74.92%	51,256	49,059	2,197	4.48%

Operations activity is reported by the FEDERAL AVIATION ADMINISTRATION



**SPOKANE INTERNATIONAL AIRPORT  
MONTHLY TRAFFIC REPORT  
AIRLINE PASSENGER STATISTICS  
NOVEMBER 2016**

Airline	NOVEMBER ENPLANEMENT DATA				NOVEMBER DEPLANEMENT DATA			
	2016	2015	Diff	% change	2016	2015	Diff	% change
Alaska	15,940	18,961	(3,021)	-15.93%	13,738	17,048	(3,310)	-19.42%
American*	3,388	3,955	(567)	-14.34%	3,483	3,677	(194)	-5.28%
Delta	31,161	28,629	2,532	8.84%	39,390	28,542	10,848	38.01%
Horizon	41,519	35,139	6,380	18.16%	43,217	37,168	6,049	16.27%
Southwest	31,176	29,132	2,044	7.02%	30,865	28,761	2,104	7.32%
United Airlines	9,600	9,016	584	6.48%	9,513	8,799	714	8.11%
Other	-	-	-	0.00%	-	-	-	0.00%
Charters	336	254	82	100.00%	337	175	162	100.00%
<b>Total Passengers</b>	<b>133,120</b>	<b>125,086</b>	<b>8,034</b>	<b>6.42%</b>	<b>140,543</b>	<b>124,170</b>	<b>16,373</b>	<b>13.19%</b>

Passenger activity reported by individual airlines

\* U. S. Airways was purchased by American Airlines and is reported under American Airlines going forward.

Total Passengers for NOVEMBER 2016	273,663
Total Passengers for NOVEMBER 2015	249,256
% Change Versus NOVEMBER 2015	9.79%

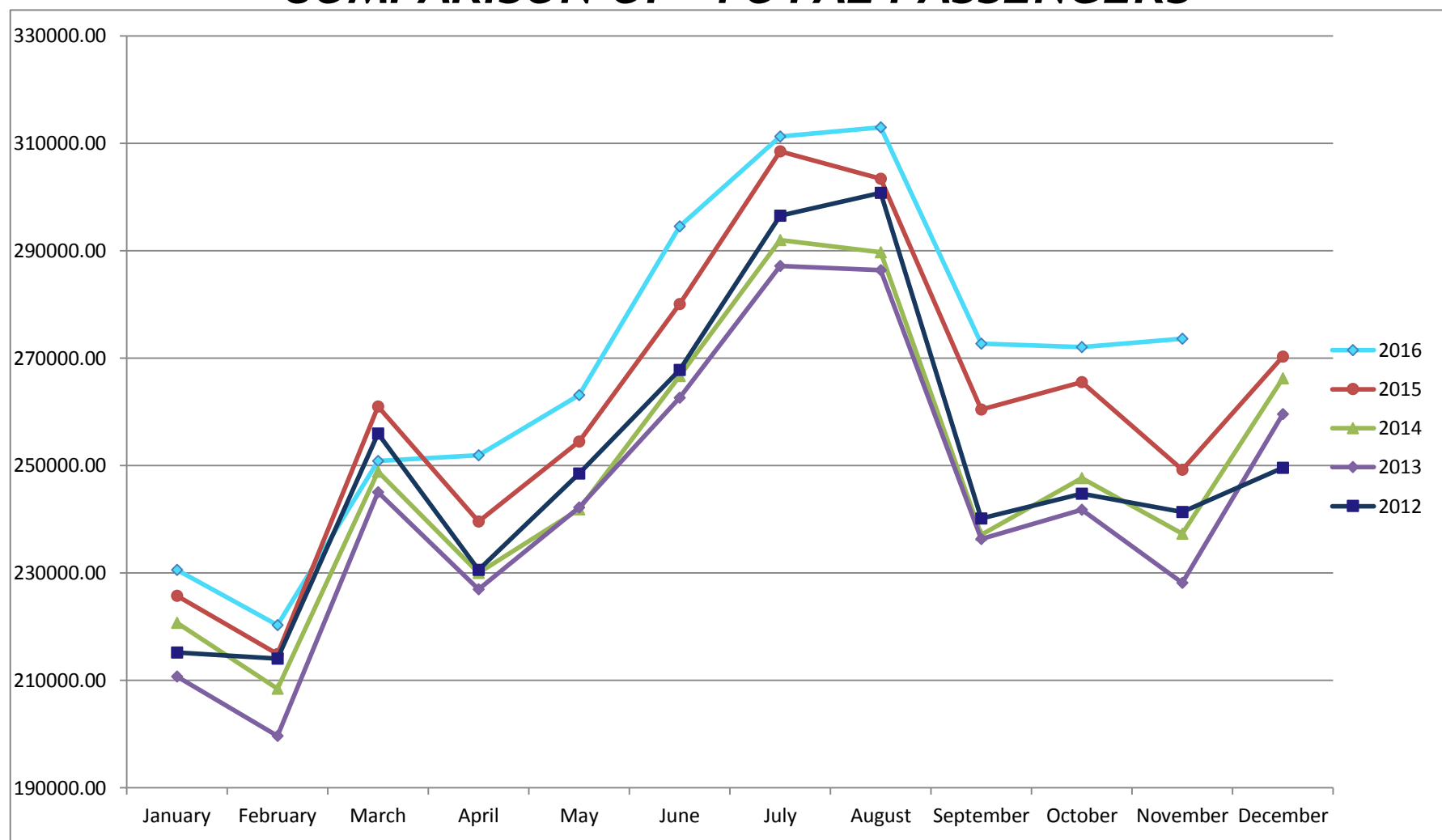


# SPOKANE INTERNATIONAL AIRPORT MONTHLY TRAFFIC REPORT NOVEMBER 2016

## TOTAL PASSENGER TRAFFIC COMPARISON

	2016	Percent difference	2015	2014	2013	2012
January	230,576	2.12%	225,785	220,737	210,770	215,209
February	220,343	2.52%	214,933	208,435	199,694	214,092
March	250,881	-3.87%	260,984	248,904	245,021	255,948
April	251,955	5.16%	239,603	229,989	227,005	230,609
May	263,144	3.40%	254,499	241,870	242,208	248,503
June	294,561	5.16%	280,098	266,701	262,638	267,849
July	311,274	0.90%	308,500	292,025	287,204	296,393
August	313,002	3.16%	303,403	289,713	286,417	300,775
September	272,675	4.70%	260,439	237,078	236,363	240,131
October	272,060	2.45%	265,563	247,679	241,776	244,804
November	273,663	9.79%	249,256	237,296	228,168	241,381
December			270,279	266,225	259,594	249,621
<b>Total Passengers YTD</b>	<b>2,954,134</b>	<b>3.18%</b>	<b>2,863,063</b>	<b>2,720,427</b>	<b>2,667,264</b>	<b>2,755,694</b>

### COMPARISON OF TOTAL PASSENGERS



Passenger activity reported by individual airlines