



SPOKANE INTERNATIONAL AIRPORT MONTHLY TRAFFIC REPORT FEBRUARY 2016

	FEBRUARY				YEAR TO DATE			
	2016	2015	Increase (Decrease)	Percent Difference	2016	2015	Increase (Decrease)	Percent Difference
MAJOR AIRLINES:								
Passengers								
Enplaned	81,769	76,097	5,672	7.45%	171,148	156,108	15,040	9.63%
Deplaned	81,925	74,752	7,173	9.60%	170,612	152,582	18,030	11.82%
Sub-total	163,694	150,849	12,845	8.52%	341,760	308,690	33,070	10.71%
REGIONAL AIRLINES:								
Passengers								
Enplaned	28,237	31,595	(3,358)	-10.63%	54,398	64,952	(10,554)	-16.25%
Deplaned	28,412	32,489	(4,077)	-12.55%	54,761	67,076	(12,315)	-18.36%
Sub-total	56,649	64,084	(7,435)	-11.60%	109,159	132,028	(22,869)	-17.32%
TOTAL PASSENGERS	220,343	214,933	5,410	2.52%	450,919	440,718	10,201	2.31%
CARGO: Enplaned	3,964,951.00	4,387,388.00	(422,437)	-9.63%	8,118,940.00	8,445,160.00	(326,220)	-3.86%
Deplaned	5,987,287.00	6,398,741.00	(411,454)	-6.43%	12,133,165.30	12,366,720.00	(233,555)	-1.89%
TOTAL CARGO (in Pounds)	9,952,238.00	10,786,129.00	(833,891)	-7.73%	20,252,105.30	20,811,880.00	(559,775)	-2.69%

Passenger activity reported by individual airlines

MONTHLY AIRCRAFT ACTIVITY

	FEBRUARY				YEAR TO DATE			
	2016	2015	Increase (Decrease)	Percent Difference	2016	2015	Increase (Decrease)	Percent Difference
Major Airlines	2,726	2,782	(56)	-2.01%	5,622	5,826	(204)	-3.50%
Regional Airlines	610	494	116	23.48%	1,125	966	159	16.46%
General Aviation	816	806	10	1.24%	1,355	1,289	66	5.12%
Military	87	91	(4)	-4.40%	139	120	19	15.83%
<i>Total Itinerant</i>	4,239	4,173	66	1.58%	8,241	8,201	40	0.49%
<i>Total Local</i>	624	352	272	77.27%	952	504	448	88.89%
TOTAL OPERATIONS	4,863	4,525	338	7.47%	9,193	8,705	488	5.61%

Operations activity is reported by the FEDERAL AVIATION ADMINISTRATION

	2016	2015	Increase (Decrease)	Percent Difference	2016	2015	Increase (Decrease)	Percent Difference
Felts Field Operations Total	3,428	3,365	63	1.87%	5,283	5,674	(391)	-6.89%

Operations activity is reported by the FEDERAL AVIATION ADMINISTRATION



**SPOKANE INTERNATIONAL AIRPORT
MONTHLY TRAFFIC REPORT
AIRLINE PASSENGER STATISTICS
FEBRUARY 2016**

Airline	FEBRUARY ENPLANEMENT DATA				FEBRUARY DEPLANEMENT DATA			
	2016	2015	Diff	% change	2016	2015	Diff	% change
<i>Alaska</i>	21,670	17,774	3,896	21.92%	21,209	16,258	4,951	30.45%
<i>American*</i>	3,515	4,727	(1,212)	-25.64%	3,439	4,462	(1,023)	-22.93%
<i>Delta</i>	24,795	21,815	2,980	13.66%	24,839	21,821	3,018	13.83%
<i>Horizon</i>	28,237	31,595	(3,358)	-10.63%	28,412	32,489	(4,077)	-12.55%
<i>Southwest</i>	24,778	24,480	298	1.22%	24,774	24,553	221	0.90%
<i>United Airlines</i>	6,860	6,982	(122)	-1.75%	7,460	7,449	11	0.15%
<i>Other</i>	-	160	(160)	100%	-	50	(50)	100.00%
<i>Charters</i>	151	159	(8)	0.00%	204	159	45	100.00%
Total Passengers	110,006	107,692	2,314	2.15%	110,337	107,241	3,096	2.89%

Passenger activity reported by individual airlines

* U. S. Airways was purchased by American Airlines and is reported under American Airlines going forward.

Total Passengers for FEBRUARY 2016	220,343
Total Passengers for FEBRUARY 2015	214,933
% Change Versus FEBRUARY 2015	2.52%



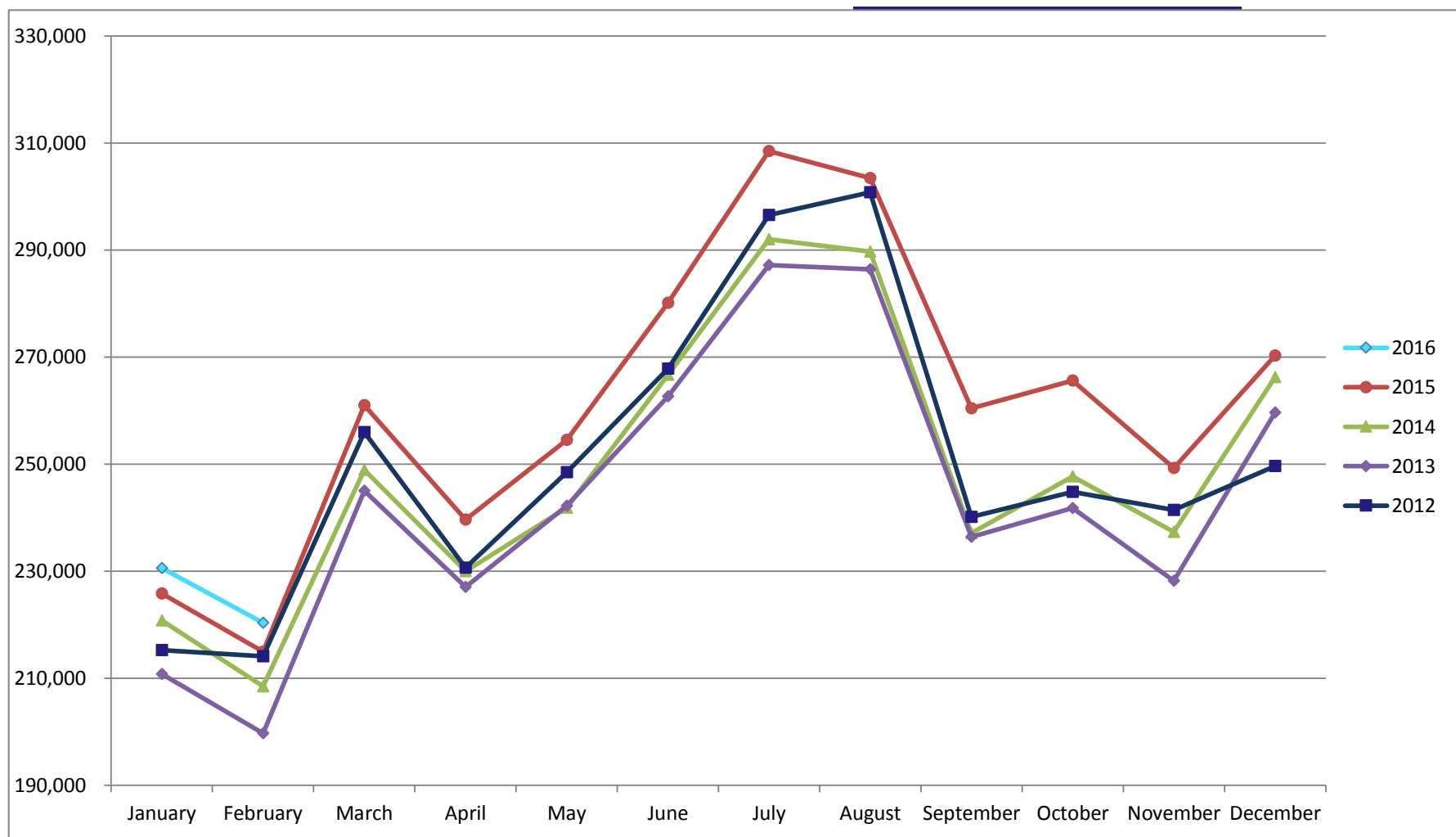
SPOKANE INTERNATIONAL AIRPORT MONTHLY TRAFFIC REPORT

Feb-16

TOTAL PASSENGER TRAFFIC COMPARISON

	2016	Percent difference	2015	2014	2013	2012
January	230,576	2.12%	225,785	220,737	210,770	215,209
February	220,343	2.52%	214,933	208,435	199,694	214,092
March			260,984	248,904	245,021	255,948
April			239,603	229,989	227,005	230,609
May			254,499	241,870	242,208	248,503
June			280,098	266,701	262,638	267,849
July			308,500	292,025	287,204	296,393
August			303,403	289,713	286,417	300,775
September			260,439	237,078	236,363	240,131
October			265,563	247,679	241,776	244,804
November			249,256	237,296	228,168	241,381
December			270,279	266,225	259,594	249,621
Total Passengers YTD	450,919	2.31%	440,718	429,172	410,464	429,301

COMPARISON OF TOTAL PASSENGERS



Passenger activity reported by individual airlines