



## SPOKANE INTERNATIONAL AIRPORT MONTHLY TRAFFIC REPORT

May-18

	May				YEAR TO DATE			
	2018	2017	Increase (Decrease)	Percent Difference	2018	2017	Increase (Decrease)	Percent Difference
<b>MAJOR AIRLINES:</b>								
Passengers								
Enplaned	124,567	100,561	24,006	23.87%	563,629	466,789	96,840	20.75%
Deplaned	127,194	101,925	25,269	24.79%	566,312	461,879	104,433	22.61%
Sub-total	251,761	202,486	49,275	24.34%	1,129,941	928,668	201,273	21.67%
<b>REGIONAL AIRLINES:</b>								
Passengers								
Enplaned	36,756	38,117	(1,361)	-3.57%	182,570	187,849	(5,279)	-2.81%
Deplaned	37,178	39,671	(2,493)	-6.28%	185,380	194,843	(9,463)	-4.86%
Sub-total	73,934	77,788	(3,854)	-4.95%	367,950	382,692	(14,742)	-3.85%
<b>TOTAL PASSENGERS</b>	<b>325,695</b>	<b>280,274</b>	<b>45,421</b>	<b>16.21%</b>	<b>1,497,891</b>	<b>1,311,360</b>	<b>186,531</b>	<b>14.22%</b>
<b>CARGO:</b>								
Enplaned	5,326,619	5,056,652	269,967	5.34%	24,610,977	24,103,823	507,154	2.10%
Deplaned	7,120,171	6,772,064	348,107	5.14%	33,844,058	33,349,060	494,998	1.48%
<b>TOTAL CARGO (in Pounds)</b>	<b>12,446,790.00</b>	<b>11,828,716.00</b>	<b>618,074</b>	<b>5.23%</b>	<b>58,455,035.00</b>	<b>57,452,883.00</b>	<b>1,002,152</b>	<b>1.74%</b>

Passenger activity reported by individual airlines

### MONTHLY AIRCRAFT ACTIVITY

	May				YEAR TO DATE			
	2018	2017	Increase (Decrease)	Percent Difference	2018	2017	Increase (Decrease)	Percent Difference
Major Airlines	3,851	3,258	593	18.20%	18,193	16,114	2,079	12.90%
Regional Airlines	571	522	49	9.39%	2,807	2,784	23	0.83%
General Aviation	915	728	187	25.69%	3,296	2,784	512	18.39%
Military	185	106	79	74.53%	495	508	(13)	-2.56%
<b>Total Itinerant</b>	<b>5,522</b>	<b>4,614</b>	<b>908</b>	<b>19.68%</b>	<b>24,791</b>	<b>22,190</b>	<b>2,601</b>	<b>11.72%</b>
<b>Total Local</b>	<b>696</b>	<b>496</b>	<b>200</b>	<b>40.32%</b>	<b>2,857</b>	<b>2,483</b>	<b>374</b>	<b>15.06%</b>
<b>TOTAL OPERATIONS</b>	<b>6,218</b>	<b>5,110</b>	<b>1,108</b>	<b>21.68%</b>	<b>27,648</b>	<b>24,673</b>	<b>2,975</b>	<b>12.06%</b>

Operations activity is reported by the FEDERAL AVIATION ADMINISTRATION

	2018	2017	Increase (Decrease)	Percent Difference	2018	2017	Increase (Decrease)	Percent Difference
<b>Felts Field Operations Total</b>	<b>7,098</b>	<b>7,940</b>	<b>(842)</b>	<b>-10.60%</b>	<b>23,341</b>	<b>24,158</b>	<b>(817)</b>	<b>-3.38%</b>

Operations activity is reported by the FEDERAL AVIATION ADMINISTRATION

May Revised to update  
American ~~by~~ Passenger

17-18-18

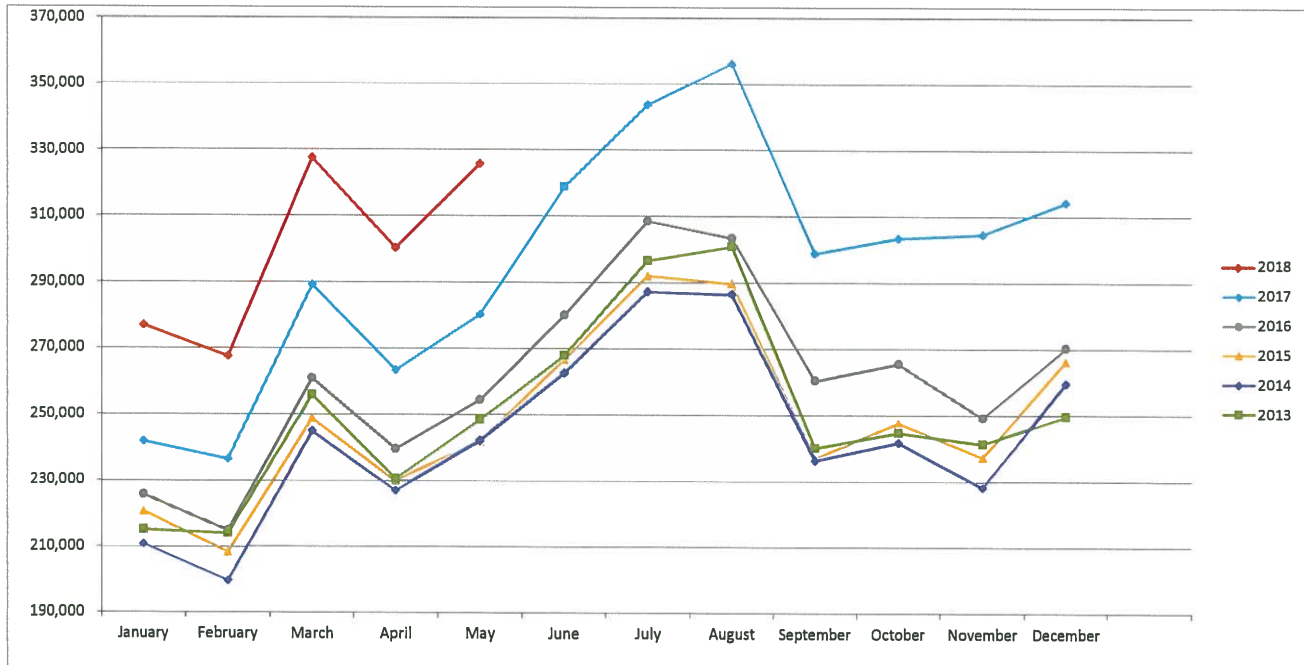
for review



## SPOKANE INTERNATIONAL AIRPORT MONTHLY TRAFFIC REPORT May-18 TOTAL PASSENGER TRAFFIC COMPARISON

	2018	Percent difference	2017	2016	2015	2014	2013
January	276,824	14.44%	241,898	230,576	225,785	220,737	210,770
February	267,542	13.11%	236,534	220,343	214,933	208,435	199,694
March	327,459	13.23%	289,191	250,881	260,984	248,904	245,021
April	300,371	14.01%	263,463	251,955	239,603	229,989	227,005
May	325,695	16.21%	280,274	263,144	254,499	241,870	242,208
June			318,891	294,561	280,098	266,701	262,638
July			343,599	311,274	308,500	292,025	287,204
August			356,008	313,002	303,403	289,713	286,417
September			298,781	272,675	260,439	237,078	236,363
October			303,464	272,060	265,563	247,679	241,776
November			304,566	273,663	249,256	237,296	228,168
December			314,243	279,961	270,279	266,225	259,594
<b>Total Passengers YTD</b>	<b>1,497,891</b>	<b>14.22%</b>	<b>1,311,360</b>	<b>1,216,899</b>	<b>1,195,804</b>	<b>1,149,935</b>	<b>1,124,698</b>

### COMPARISON OF TOTAL PASSENGERS





**SPOKANE INTERNATIONAL AIRPORT  
MONTHLY TRAFFIC REPORT  
AIRLINE PASSENGER STATISTICS  
May-18**

	<i>Enplaned</i>				<i>Deplaned</i>			
	2018	2017	Diff	% Change	2018	2017	Diff	% Change
<i>Alaska</i>	19,212	19,827	(615)	-3.10%	17,932	18,200	(268)	-1.47%
<i>American</i>	12,206	7,133	5,073	71.12%	12,885	7,550	5,335	70.66%
<i>Delta</i>	34,134	31,340	2,794	8.92%	34,363	32,174	2,189	6.80%
<i>Frontier</i>	2,885	-	2,885	N/A	3,664	-	3,664	N/A
<i>Horizon</i>	36,756	38,117	(1,361)	-3.57%	37,178	39,671	(2,493)	-6.28%
<i>Southwest</i>	37,259	32,401	4,858	14.99%	38,376	33,917	4,459	13.15%
<i>United Airlines</i>	18,714	9,707	9,007	92.79%	19,817	9,932	9,885	99.53%
<i>Charter</i>	157	153	4	2.61%	157	152	5	3.29%
<b>Grand Total</b>	<b>161,323</b>	<b>138,678</b>	<b>22,645</b>	<b>14.86%</b>	<b>164,372</b>	<b>141,596</b>	<b>22,776</b>	<b>14.55%</b>

Passenger activity reported by individual airlines

\* U. S. Airways was purchased by American Airlines and is reported under American Airlines going forward.

Total Passengers for	May, 2018	325,695
Total Passengers for	May, 2017	280,274
% Change Versus	May, 2017	16.21%