



SPOKANE INTERNATIONAL AIRPORT MONTHLY TRAFFIC REPORT JUNE 2016

	JUNE				YEAR TO DATE			
	2016	2015	Increase (Decrease)	Percent Difference	2016	2015	Increase (Decrease)	Percent Difference
MAJOR AIRLINES:								
Passengers								
Enplaned	102,344	100,914	1,430	1.42%	548,419	530,587	17,832	3.36%
Deplaned	104,233	100,916	3,317	3.29%	551,794	527,743	24,051	4.56%
Sub-total	206,577	201,830	4,747	2.35%	1,100,213	1,058,330	41,883	3.96%
REGIONAL AIRLINES:								
Passengers								
Enplaned	43,052	37,503	5,549	14.80%	202,729	203,051	(322)	-0.16%
Deplaned	44,932	40,541	4,391	10.83%	208,518	214,297	(5,779)	-2.70%
Sub-total	87,984	78,044	9,940	12.74%	411,247	417,348	(6,101)	-1.46%
TOTAL PASSENGERS	294,561	279,874	14,687	5.25%	1,511,460	1,475,678	35,782	2.42%
CARGO: Enplaned	1,979,760.00	4,181,361.00	(2,201,601)	-52.65%	18,737,324.00	25,937,249.00	(7,199,925)	-27.76%
 Deplaned	2,703,873.00	6,359,852.00	(3,655,979)	-57.49%	26,766,401.00	38,338,875.00	(11,572,474)	-30.18%
*TOTAL CARGO (in Pounds)	4,683,633.00	10,541,213.00	(5,857,580)	-55.57%	45,503,725.00	64,276,124.00	(18,772,399)	-29.21%

Passenger activity reported by individual airlines

* FEDEX has not yet reported April 2016 or May 2016 or June 2016 cargo as of 6/21/2016

MONTHLY AIRCRAFT ACTIVITY

	MAY				YEAR TO DATE			
	2016	2015	Increase (Decrease)	Percent Difference	2016	2015	Increase (Decrease)	Percent Difference
Major Airlines	3,543	3,300	243	7.36%	18,923	18,520	403	2.18%
Regional Airlines	508	564	(56)	-9.93%	3,270	3,207	63	1.96%
General Aviation	929	1,150	(221)	-19.22%	5,370	5,846	(476)	-8.14%
Military	41	61	(20)	-32.79%	558	519	39	7.51%
<i>Total Itinerant</i>	<i>5,021</i>	<i>5,075</i>	<i>(54)</i>	<i>-1.06%</i>	<i>28,121</i>	<i>28,092</i>	<i>29</i>	<i>0.10%</i>
<i>Total Local</i>	<i>378</i>	<i>460</i>	<i>(82)</i>	<i>-17.83%</i>	<i>2,670</i>	<i>3,198</i>	<i>(528)</i>	<i>-16.51%</i>
TOTAL OPERATIONS	5,399	5,535	(136)	-2.46%	30,791	31,290	(499)	-1.59%

Operations activity is reported by the FEDERAL AVIATION ADMINISTRATION

	2016	2015	Increase (Decrease)	Percent Difference	2016	2015	Increase (Decrease)	Percent Difference
Felts Field Operations Total	6,734	6,254	480	7.68%	23,554	27,341	(3,787)	-13.85%

Operations activity is reported by the FEDERAL AVIATION ADMINISTRATION

** FEDERAL AVIATION ADMINISTRATION reported -0- Local operations for GEG in April 2016



**SPOKANE INTERNATIONAL AIRPORT
MONTHLY TRAFFIC REPORT
AIRLINE PASSENGER STATISTICS
June 2016**

Airline	JUNE ENPLANEMENT DATA				JUNE DEPLANEMENT DATA			
	2016	2015	Diff	% change	2016	2015	Diff	% change
Alaska	14,919	15,531	(612)	-3.94%	14,789	14,890	(101)	-0.68%
American*	6,613	6,353	260	4.09%	7,058	6,645	413	6.22%
Delta	36,317	35,978	339	0.94%	36,490	35,328	1,162	3.29%
Horizon	43,052	37,503	5,549	14.80%	44,932	40,541	4,391	10.83%
Southwest	35,487	33,698	1,789	5.31%	36,772	35,123	1,649	4.69%
United Airlines	9,008	9,142	(134)	-1.47%	8,984	8,799	185	2.10%
Other	-	-	-	0.00%	-	-	-	0.00%
Charters	-	212	(212)	100.00%	140	131	9	100.00%
Total Passengers	145,396	138,417	6,979	5.04%	149,165	141,457	7,708	5.45%

Passenger activity reported by individual airlines

* U. S. Airways was purchased by American Airlines and is reported under American Airlines going forward.

Total Passengers for JUNE 2016	294,561
Total Passengers for JUNE 2015	279,874
% Change Versus JUNE 2015	5.25%

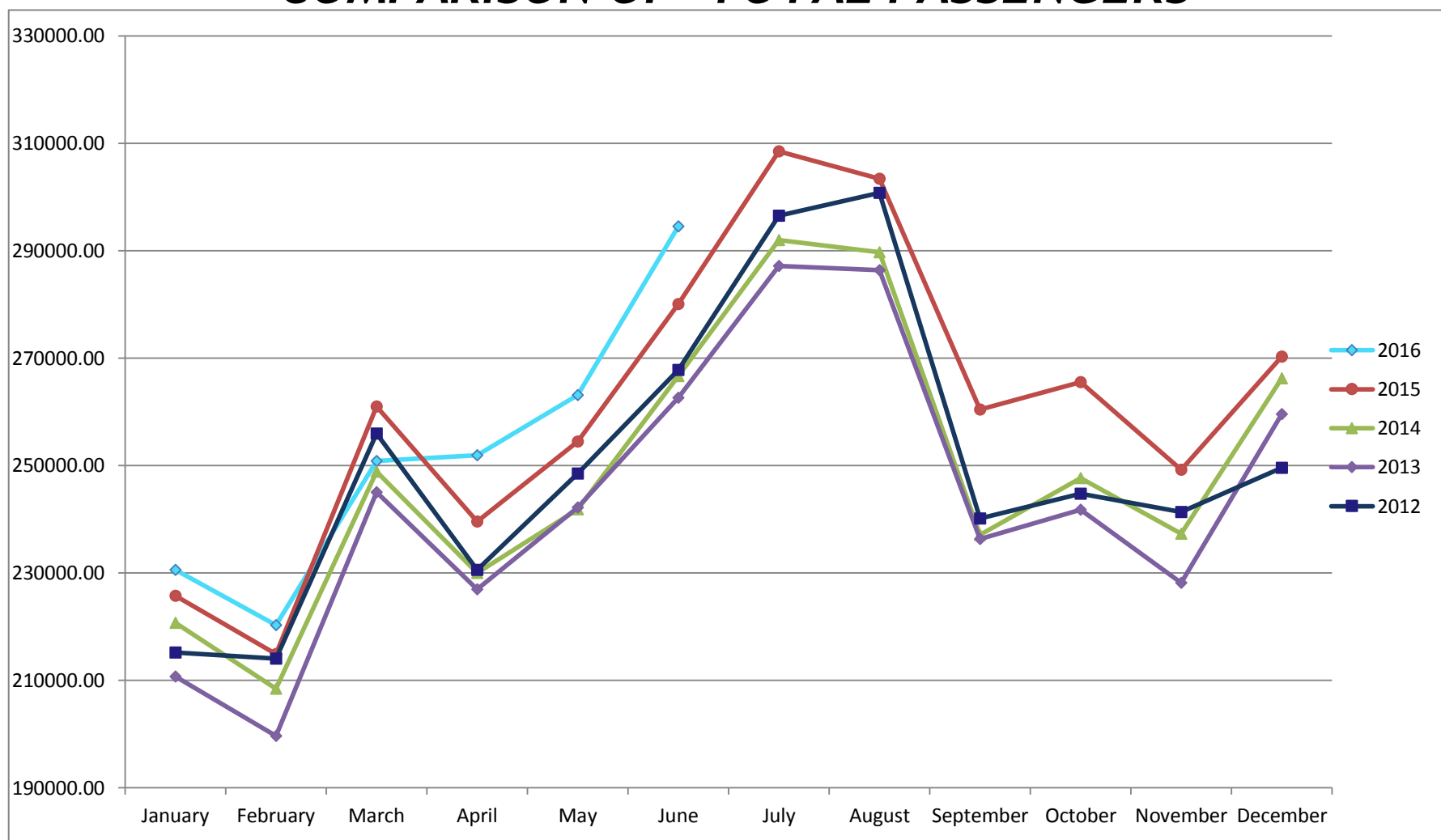


SPOKANE INTERNATIONAL AIRPORT MONTHLY TRAFFIC REPORT JUNE 2016

TOTAL PASSENGER TRAFFIC COMPARISON

	2016	Percent difference	2015	2014	2013	2012
January	230,576	2.12%	225,785	220,737	210,770	215,209
February	220,343	2.52%	214,933	208,435	199,694	214,092
March	250,881	-3.87%	260,984	248,904	245,021	255,948
April	251,955	5.16%	239,603	229,989	227,005	230,609
May	263,144	3.40%	254,499	241,870	242,208	248,503
June	294,561	5.16%	280,098	266,701	262,638	267,849
July			308,500	292,025	287,204	296,393
August			303,403	289,713	286,417	300,775
September			260,439	237,078	236,363	240,131
October			265,563	247,679	241,776	244,804
November			249,256	237,296	228,168	241,381
December			270,279	266,225	259,594	249,621
Total Passengers YTD	1,511,460	2.41%	1,475,902	1,416,636	1,387,336	1,432,210

COMPARISON OF TOTAL PASSENGERS



Passenger activity reported by individual airlines