



SPOKANE INTERNATIONAL AIRPORT MONTHLY TRAFFIC REPORT DECEMBER 2016

	DECEMBER				YEAR TO DATE			
	2016	2015	Increase (Decrease)	Percent Difference	2016	2015	Increase (Decrease)	Percent Difference
MAJOR AIRLINES:								
Passengers								
Enplaned	97,916	98,069	(153)	-0.16%	1,153,695	1,135,117	18,578	1.64%
Deplaned	95,894	95,057	837	0.88%	1,151,693	1,117,638	34,055	3.05%
Sub-total	193,810	193,126	684	0.35%	2,305,388	2,252,755	52,633	2.34%
REGIONAL AIRLINES:								
Passengers								
Enplaned	42,883	38,150	4,733	12.41%	458,348	431,215	27,133	6.29%
Deplaned	43,268	39,003	4,265	10.94%	470,359	449,372	20,987	4.67%
Sub-total	86,151	77,153	8,998	11.66%	928,707	880,587	48,120	5.46%
TOTAL PASSENGERS	279,961	270,279	9,682	3.58%	3,234,095	3,133,342	100,753	3.22%
CARGO: Enplaned	6,092,407.00	5,573,970.00	518,437	9.30%	55,309,506.00	53,572,485.00	1,737,021	3.24%
 Deplaned	9,052,379.00	8,999,000.00	53,379	0.59%	80,044,459.00	79,393,158.05	651,301	0.82%
*TOTAL CARGO (in Pounds)	15,144,786.00	14,572,970.00	571,816	3.92%	135,353,965.00	132,965,643.05	2,388,322	1.80%

Passenger activity reported by individual airlines

MONTHLY AIRCRAFT ACTIVITY

	DECEMBER				YEAR TO DATE			
	2016	2015	Increase (Decrease)	Percent Difference	2016	2015	Increase (Decrease)	Percent Difference
Major Airlines	3,472	3,371	101	3.00%	39,754	38,332	1,422	3.71%
Regional Airlines	809	792	17	2.15%	6,952	6,975	(23)	-0.33%
General Aviation	429	501	(72)	-14.37%	9,350	11,739	(2,389)	-20.35%
Military	105	86	19	22.09%	1,107	1,179	(72)	-6.11%
Total Itinerant	4,815	4,750	65	1.37%	57,163	58,225	(1,062)	-1.82%
Total Local	399	223	176	78.92%	5,276	6,807	(1,531)	-22.49%
TOTAL OPERATIONS	5,214	4,973	241	4.85%	62,439	65,032	(2,593)	-3.99%

Operations activity is reported by the FEDERAL AVIATION ADMINISTRATION

	2016	2015	Increase (Decrease)	Percent Difference	2016	2015	Increase (Decrease)	Percent Difference
Felts Field Operations Total	3,057	1,670	1,387	83.05%	54,313	50,729	3,584	7.06%

Operations activity is reported by the FEDERAL AVIATION ADMINISTRATION



**SPOKANE INTERNATIONAL AIRPORT
MONTHLY TRAFFIC REPORT
AIRLINE PASSENGER STATISTICS
DECEMBER 2016**

Airline	DECEMBER ENPLANEMENT DATA				DECEMBER DEPLANEMENT DATA			
	2016	2015	Diff	% change	2016	2015	Diff	% change
Alaska	18,542	22,148	(3,606)	-16.28%	16,771	20,785	(4,014)	-19.31%
American*	5,410	5,501	(91)	-1.65%	5,653	5,299	354	6.68%
Delta	31,297	30,603	694	2.27%	31,312	29,752	1,560	5.24%
Horizon	42,883	38,150	4,733	12.41%	43,268	39,003	4,265	10.94%
Southwest	32,592	30,984	1,608	5.19%	32,161	30,763	1,398	4.54%
United Airlines	9,286	8,492	794	9.35%	9,156	8,098	1,058	13.06%
Other	-	-	-	0.00%	-	-	-	0.00%
Charters	789	341	448	100.00%	841	360	481	100.00%
Total Passengers	140,799	136,219	4,580	3.36%	139,162	134,060	5,102	3.81%

Passenger activity reported by individual airlines

* U. S. Airways was purchased by American Airlines and is reported under American Airlines going forward.

Total Passengers for DECEMBER 2016	279,961
Total Passengers for DECEMBER 2015	270,279
% Change Versus DECEMBER 2015	3.58%

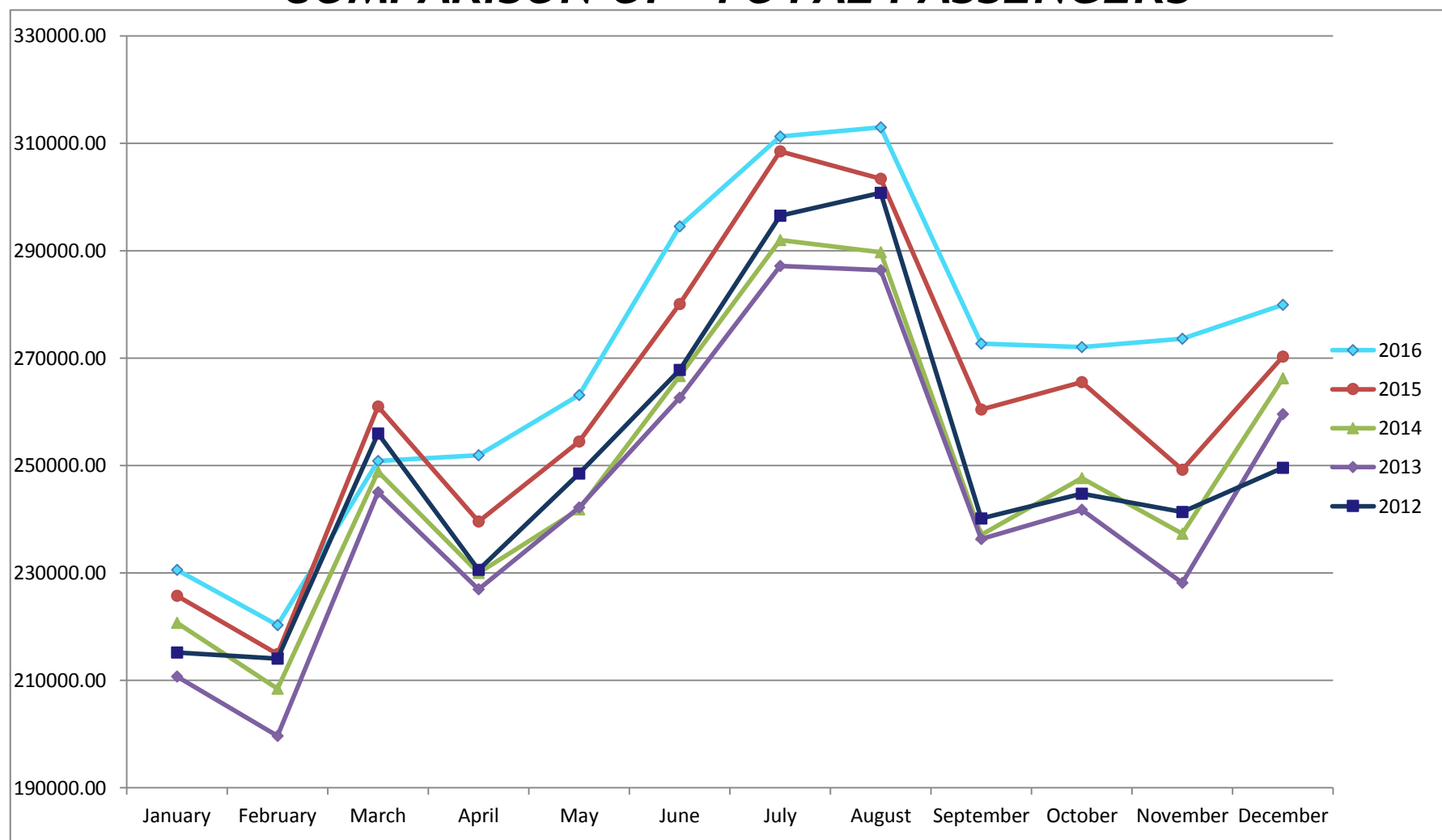


SPOKANE INTERNATIONAL AIRPORT MONTHLY TRAFFIC REPORT DECEMBER 2016

TOTAL PASSENGER TRAFFIC COMPARISON

	2016	Percent difference	2015	2014	2013	2012
<i>January</i>	230,576	2.12%	225,785	220,737	210,770	215,209
<i>February</i>	220,343	2.52%	214,933	208,435	199,694	214,092
<i>March</i>	250,881	-3.87%	260,984	248,904	245,021	255,948
<i>April</i>	251,955	5.16%	239,603	229,989	227,005	230,609
<i>May</i>	263,144	3.40%	254,499	241,870	242,208	248,503
<i>June</i>	294,561	5.16%	280,098	266,701	262,638	267,849
<i>July</i>	311,274	0.90%	308,500	292,025	287,204	296,393
<i>August</i>	313,002	3.16%	303,403	289,713	286,417	300,775
<i>September</i>	272,675	4.70%	260,439	237,078	236,363	240,131
<i>October</i>	272,060	2.45%	265,563	247,679	241,776	244,804
<i>November</i>	273,663	9.79%	249,256	237,296	228,168	241,381
<i>December</i>	279,961	3.58%	270,279	266,225	259,594	249,621
Total Passengers YTD	3,234,095	3.22%	3,133,342	2,986,652	2,926,858	3,005,315

COMPARISON OF TOTAL PASSENGERS



Passenger activity reported by individual airlines