



SPOKANE INTERNATIONAL AIRPORT MONTHLY TRAFFIC REPORT FEBRUARY 2017

	FEBRUARY				YEAR TO DATE			
	2017	2016	Increase (Decrease)	Percent Difference	2017	2016	Increase (Decrease)	Percent Difference
MAJOR AIRLINES:								
Passengers								
Enplaned	86,580	81,769	4,811	5.88%	170,141	171,148	(1,007)	-0.59%
Deplaned	83,863	81,925	1,938	2.37%	164,718	170,612	(5,894)	-3.45%
Sub-total	170,443	163,694	6,749	4.12%	334,859	341,760	(6,901)	-2.02%
REGIONAL AIRLINES:								
Passengers								
Enplaned	32,149	28,237	3,912	13.85%	70,124	54,398	15,726	28.91%
Deplaned	33,942	28,412	5,530	19.46%	73,449	54,761	18,688	34.13%
Sub-total	66,091	56,649	9,442	16.67%	143,573	109,159	34,414	31.53%
TOTAL PASSENGERS	236,534	220,343	16,191	7.35%	478,432	450,919	27,513	6.10%
CARGO: Enplaned	4,545,045.00	3,964,951.00	580,094	14.63%	8,963,798.00	8,118,940.00	844,858	10.41%
Deplaned	6,308,258.00	5,987,287.00	320,971	5.36%	12,807,461.00	12,133,165.00	674,296	5.56%
TOTAL CARGO (in Pounds)	10,853,303.00	9,952,238.00	901,065	9.05%	21,771,259.00	20,252,105.00	1,519,154	7.50%

Passenger activity reported by individual airlines

MONTHLY AIRCRAFT ACTIVITY

	FEBRUARY				YEAR TO DATE			
	2017	2016	Increase (Decrease)	Percent Difference	2017	2016	Increase (Decrease)	Percent Difference
Major Airlines	2,944	2,726	218	8.00%	6,178	5,622	556	9.89%
Regional Airlines	489	610	(121)	-19.84%	1,054	1,125	(71)	-6.31%
General Aviation	427	816	(389)	-47.67%	828	1,355	(527)	-38.89%
Military	36	87	(51)	-58.62%	78	139	(61)	-43.88%
<i>Total Itinerant</i>	3,896	4,239	(343)	-8.09%	8,138	8,241	(103)	-1.25%
<i>Total Local</i>	245	624	(379)	-60.74%	514	952	(438)	-46.01%
TOTAL OPERATIONS	4,141	4,863	(722)	-14.85%	8,652	9,193	(541)	-5.88%

Operations activity is reported by the FEDERAL AVIATION ADMINISTRATION

	2017	2016	Increase (Decrease)	Percent Difference	2017	2016	Increase (Decrease)	Percent Difference
Felts Field Operations Total	3,081	3,428	(347)	-10.12%	5,872	5,283	589	11.15%

Operations activity is reported by the FEDERAL AVIATION ADMINISTRATION



**SPOKANE INTERNATIONAL AIRPORT
MONTHLY TRAFFIC REPORT
AIRLINE PASSENGER STATISTICS
FEBRUARY 2017**

Airline	FEBRUARY ENPLANEMENT DATA				FEBRUARY DEPLANEMENT DATA			
	2017	2016	Diff	% change	2017	2016	Diff	% change
Alaska	21,785	21,670	115	0.53%	19,279	21,209	(1,930)	-9.10%
American*	6,184	3,515	2,669	75.93%	6,316	3,439	2,877	83.66%
Delta	24,404	24,795	(391)	-1.58%	24,195	24,839	(644)	-2.59%
Horizon	32,149	28,237	3,912	13.85%	33,942	28,412	5,530	19.46%
Southwest	26,475	24,778	1,697	6.85%	26,186	24,774	1,412	5.70%
United Airlines	7,259	6,860	399	5.82%	7,454	7,460	(6)	-0.08%
Other	-	-	-	100%	-	-	-	100.00%
Charters	473	151	322	0.00%	433	204	229	100.00%
Total Passengers	118,729	110,006	8,723	7.93%	117,805	110,337	7,468	6.77%

Passenger activity reported by individual airlines

* U. S. Airways was purchased by American Airlines and is reported under American Airlines going forward.

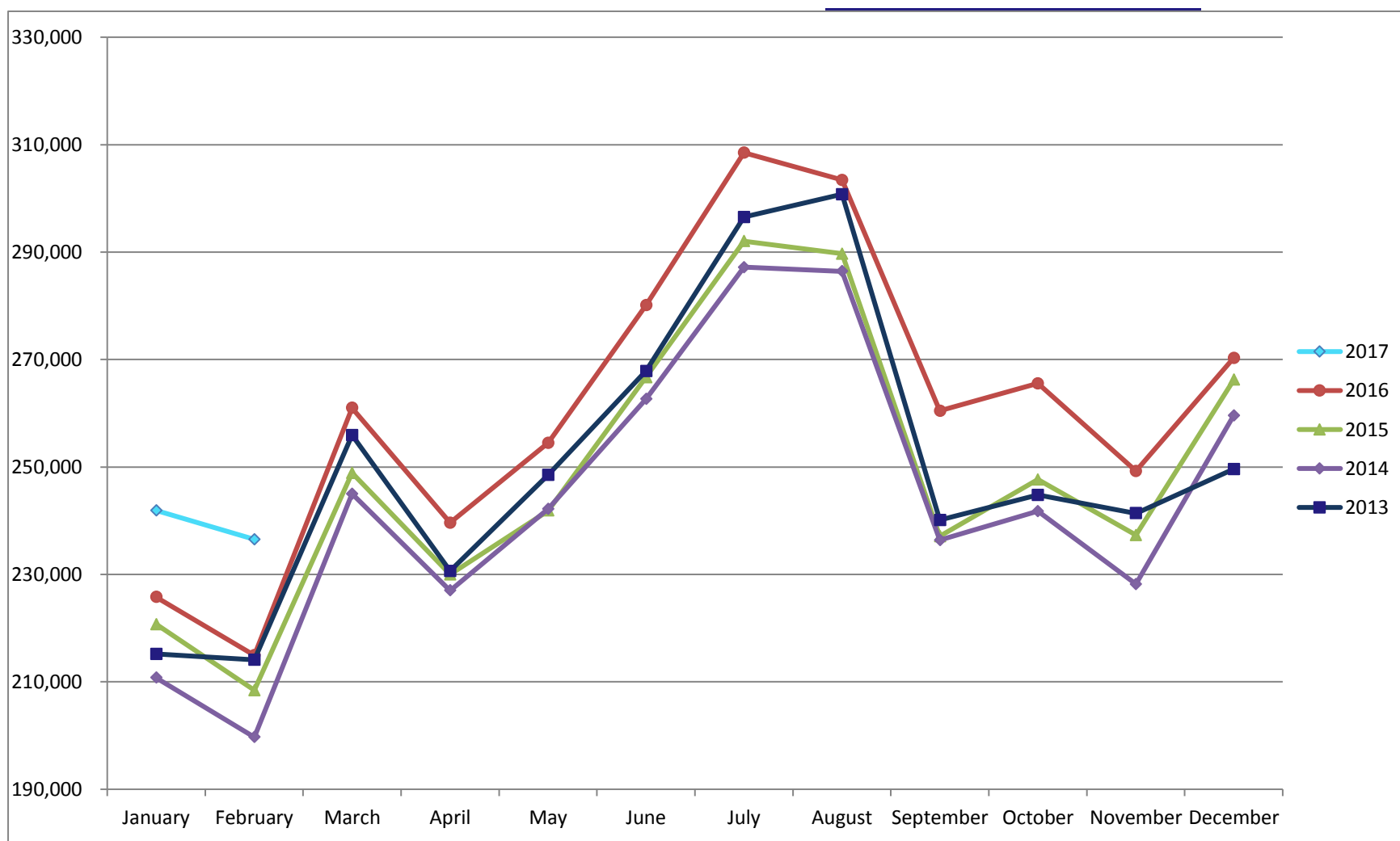
Total Passengers for FEBRUARY 2017	236,534
Total Passengers for FEBRUARY 2016	220,343
% Change Versus FEBRUARY 2016	7.35%



SPOKANE INTERNATIONAL AIRPORT MONTHLY TRAFFIC REPORT FEBRUARY 2017 TOTAL PASSENGER TRAFFIC COMPARISON

	2017	Percent difference	2016	2015	2014	2013
January	241,898	4.91%	230,576	225,785	220,737	210,770
February	236,534	7.35%	220,343	214,933	208,435	199,694
March			250,881	260,984	248,904	245,021
April			251,955	239,603	229,989	227,005
May			263,144	254,499	241,870	242,208
June			294,561	280,098	266,701	262,638
July			311,274	308,500	292,025	287,204
August			313,002	303,403	289,713	286,417
September			272,675	260,439	237,078	236,363
October			272,060	265,563	247,679	241,776
November			273,663	249,256	237,296	228,168
December			279,961	270,279	266,225	259,594
Total Passengers YTD	478,432	6.10%	450,919	440,718	429,172	410,464

COMPARISON OF TOTAL PASSENGERS



Passenger activity reported by individual airlines