



SPOKANE INTERNATIONAL AIRPORT MONTHLY TRAFFIC REPORT JULY 2016

	JULY				YEAR TO DATE			
	2016	2015	Increase (Decrease)	Percent Difference	2016	2015	Increase (Decrease)	Percent Difference
MAJOR AIRLINES:								
Passengers								
Enplaned	112,716	111,354	1,362	1.22%	661,135	641,941	19,194	2.99%
Deplaned	112,577	113,269	(692)	-0.61%	664,371	641,236	23,135	3.61%
Sub-total	225,293	224,623	670	0.30%	1,325,506	1,283,177	42,329	3.30%
REGIONAL AIRLINES:								
Passengers								
Enplaned	42,343	40,930	1,413	3.45%	245,072	243,981	1,091	0.45%
Deplaned	43,638	42,947	691	1.61%	252,156	257,244	(5,088)	-1.98%
Sub-total	85,981	83,877	2,104	2.51%	497,228	501,225	(3,997)	-0.80%
TOTAL PASSENGERS	311,274	308,500	2,774	0.90%	1,822,734	1,784,402	38,332	2.15%
CARGO: Enplaned	4,445,523.00	4,598,280.00	(152,757)	-3.32%	30,422,280.00	31,950,200.00	(1,527,920)	-4.78%
Deplaned	6,123,427.00	6,742,420.00	(618,993)	-9.18%	44,728,535.00	47,241,920.00	(2,513,385)	-5.32%
*TOTAL CARGO (in Pounds)	10,568,950.00	11,340,700.00	(771,750)	-6.81%	75,150,815.00	79,192,120.00	(4,041,305)	-5.10%

Passenger activity reported by individual airlines

MONTHLY AIRCRAFT ACTIVITY

	JULY				YEAR TO DATE			
	2016	2015	Increase (Decrease)	Percent Difference	2016	2015	Increase (Decrease)	Percent Difference
Major Airlines	3,615	3,432	183	5.33%	22,538	21,952	586	2.67%
Regional Airlines	534	580	(46)	-7.93%	3,804	3,787	17	0.45%
General Aviation	851	1,179	(328)	-27.82%	6,221	7,025	(804)	-11.44%
Military	73	110	(37)	-33.64%	631	629	2	0.32%
<i>Total Itinerant</i>	<i>5,073</i>	<i>5,301</i>	<i>(228)</i>	<i>-4.30%</i>	<i>33,194</i>	<i>33,393</i>	<i>(199)</i>	<i>-0.60%</i>
<i>Total Local</i>	<i>448</i>	<i>738</i>	<i>(290)</i>	<i>-39.30%</i>	<i>3,118</i>	<i>3,936</i>	<i>(818)</i>	<i>-20.78%</i>
TOTAL OPERATIONS	5,521	6,039	(518)	-8.58%	36,312	37,329	(1,017)	-2.72%

Operations activity is reported by the FEDERAL AVIATION ADMINISTRATION

	2016	2015	Increase (Decrease)	Percent Difference	2016	2015	Increase (Decrease)	Percent Difference
Felts Field Operations Total	4,937	4,653	284	6.10%	28,491	31,994	(3,503)	-10.95%

Operations activity is reported by the FEDERAL AVIATION ADMINISTRATION

** FEDERAL AVIATION ADMINISTRATION reported -0- Local operations for GEG in April 2016



**SPOKANE INTERNATIONAL AIRPORT
MONTHLY TRAFFIC REPORT
AIRLINE PASSENGER STATISTICS
July 2016**

Airline	JULY ENPLANEMENT DATA				JULY DEPLANEMENT DATA			
	2016	2015	Diff	% change	2016	2015	Diff	% change
Alaska	14,972	15,173	(201)	-1.32%	14,116	15,440	(1,324)	-8.58%
American*	7,085	7,062	23	0.33%	7,220	7,318	(98)	-1.34%
Delta	42,490	40,848	1,642	4.02%	43,013	40,939	2,074	5.07%
Horizon	42,343	40,930	1,413	3.45%	43,638	42,947	691	1.61%
Southwest	38,202	38,648	(446)	-1.15%	38,490	40,064	(1,574)	-3.93%
United Airlines	9,784	9,490	294	3.10%	9,554	9,375	179	1.91%
Other	-	-	-	0.00%	-	-	-	0.00%
Charters	183	133	50	100.00%	184	133	51	100.00%
Total Passengers	155,059	152,284	2,775	1.82%	156,215	156,216	(1)	0.00%

Passenger activity reported by individual airlines

* U. S. Airways was purchased by American Airlines and is reported under American Airlines going forward.

Total Passengers for JULY 2016	311,274
Total Passengers for JULY 2015	308,500
% Change Versus JULY 2015	0.90%

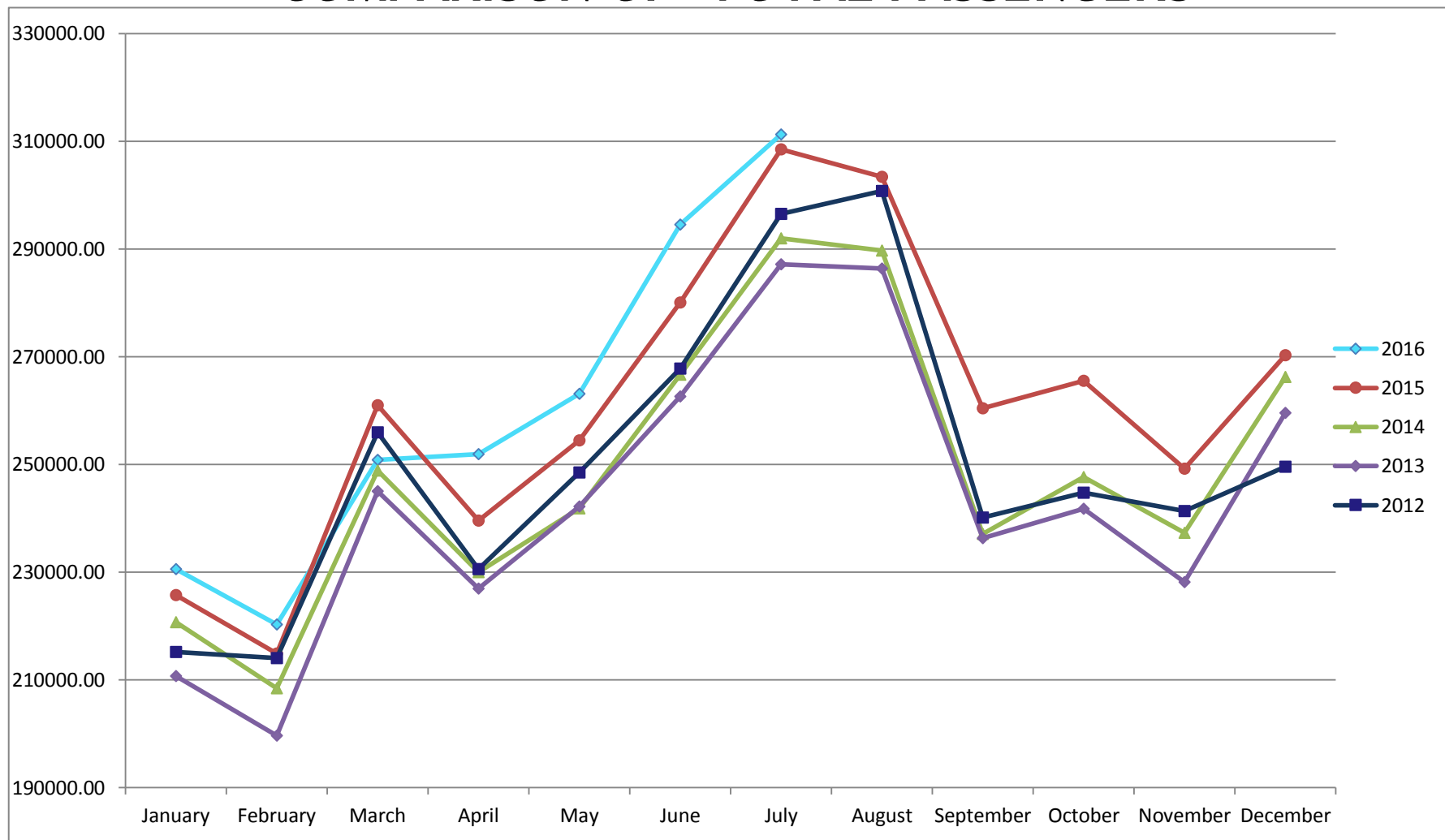


SPOKANE INTERNATIONAL AIRPORT MONTHLY TRAFFIC REPORT JULY 2016

TOTAL PASSENGER TRAFFIC COMPARISON

	2016	Percent difference	2015	2014	2013	2012
January	230,576	2.12%	225,785	220,737	210,770	215,209
February	220,343	2.52%	214,933	208,435	199,694	214,092
March	250,881	-3.87%	260,984	248,904	245,021	255,948
April	251,955	5.16%	239,603	229,989	227,005	230,609
May	263,144	3.40%	254,499	241,870	242,208	248,503
June	294,561	5.16%	280,098	266,701	262,638	267,849
July	311,274	0.90%	308,500	292,025	287,204	296,393
August			303,403	289,713	286,417	300,775
September			260,439	237,078	236,363	240,131
October			265,563	247,679	241,776	244,804
November			249,256	237,296	228,168	241,381
December			270,279	266,225	259,594	249,621
Total Passengers YTD	1,822,734	23.50%	1,475,902	1,416,636	1,387,336	1,432,210

COMPARISON OF TOTAL PASSENGERS



Passenger activity reported by individual airlines