



SPOKANE INTERNATIONAL AIRPORT MONTHLY TRAFFIC REPORT JULY 2015

	JULY				YEAR TO DATE			
	2015	2014	Increase (Decrease)	Percent Difference	2015	2014	Increase (Decrease)	Percent Difference
MAJOR AIRLINES:								
Passengers								
Enplaned	111,354	106,478	4,876	4.58%	641,941	585,488	56,453	9.64%
Deplaned	113,269	108,288	4,981	4.60%	641,236	594,234	47,002	7.91%
Sub-total	224,623	214,766	9,857	4.59%	1,283,177	1,179,722	103,455	8.77%
REGIONAL AIRLINES:								
Passengers								
Enplaned	40,930	37,814	3,116	8.24%	243,981	263,314	(19,333)	-7.34%
Deplaned	42,947	39,445	3,502	8.88%	257,244	265,625	(8,381)	-3.16%
Sub-total	83,877	77,259	6,618	8.57%	501,225	528,939	(27,714)	-5.24%
TOTAL PASSENGERS	308,500	292,025	16,475	5.64%	1,784,402	1,708,661	75,741	4.43%
CARGO: Enplaned	2,299.14	2,238.04	61	2.73%	15,252.39	15,030.58	222	1.48%
 Deplaned	3,371.21	3,366.29	5	0.15%	22,507.59	22,040.06	468	2.12%
CARGO: Felts Field	7.18	4.07	3	76.41%	55.62	13.74	42	304.80%
TOTAL CARGO (in Tons)	5,677.53	5,608.40	66	1.23%	37,815.60	37,084.38	689	1.97%

Passenger activity reported by individual airlines

MONTHLY AIRCRAFT ACTIVITY

	JULY				YEAR TO DATE			
	2015	2014	Increase (Decrease)	Percent Difference	2015	2014	Increase (Decrease)	Percent Difference
Major Airlines	3,432	3,228	204	6.32%	21,952	20,414	1,538	7.53%
Regional Airlines	580	709	(129)	-18.19%	3,787	4,460	(673)	-15.09%
General Aviation	1,179	1,297	(118)	-9.10%	7,025	6,981	44	0.63%
Military	110	82	28	34.15%	629	751	(122)	-16.25%
<i>Total Itinerant</i>	5,301	5,316	(15)	-0.28%	33,393	32,606	787	2.41%
<i>Total Local</i>	738	871	(133)	-15.27%	3,936	4,535	(599)	-13.21%
TOTAL OPERATIONS	6,039	6,187	(148)	-2.39%	37,329	37,141	188	0.51%

Operations activity is reported by the FEDERAL AVIATION ADMINISTRATION

	2015	2014	Increase (Decrease)	Percent Difference	2015	2014	Increase (Decrease)	Percent Difference
Felts Field Operations Total	4,653	4,886	(233)	-4.77%	31,994	28,544	3,450	12.09%

Operations activity is reported by the FEDERAL AVIATION ADMINISTRATION



SPOKANE INTERNATIONAL AIRPORT MONTHLY TRAFFIC REPORT AIRLINE PASSENGER STATISTICS JULY 2015

Airline	July ENPLANEMENT DATA				July DEPLANEMENT DATA			
	2015	2014	Diff	% change	2015	2014	Diff	% change
Alaska	15,173	17,947	(2,774)	-15.46%	15,440	17,147	(1,707)	-9.96%
American*	7,062	6,405	657	10.26%	7,318	6,912	406	5.87%
Delta	40,848	31,621	9,227	29.18%	40,939	32,561	8,378	25.73%
Horizon	40,930	37,814	3,116	8.24%	42,947	39,445	3,502	8.88%
Southwest	38,648	35,583	3,065	8.61%	40,064	36,571	3,493	9.55%
United Airlines	9,490	9,030	460	5.09%	9,375	8,983	392	4.36%
Other	-	5,892	(5,892)	100%	-	6,114	(6,114)	100.00%
Charters	133	-	133	0.00%	133	-	133	100.00%
Total Passengers	152,284	144,292	7,992	5.54%	156,216	147,733	8,483	5.74%

Passenger activity reported by individual airlines

* U. S. Airways was purchased by American Airlines and is reported under American Airlines going forward.

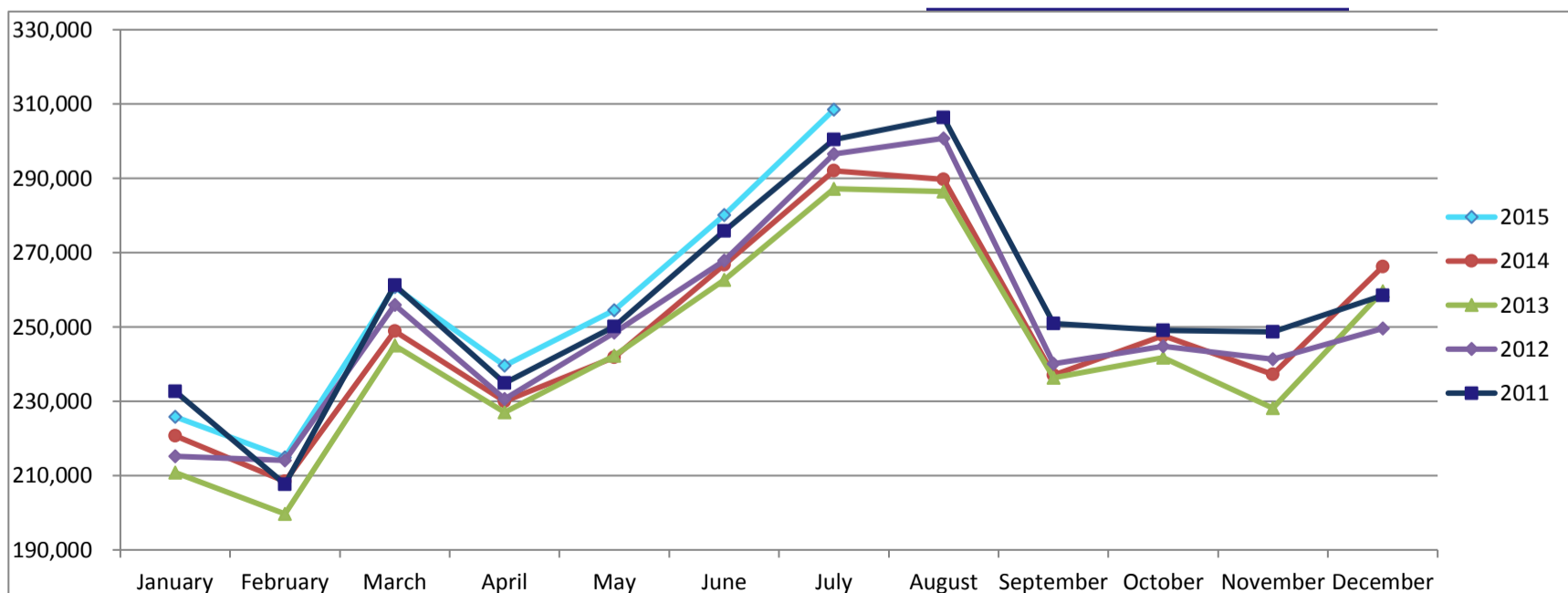
Total Passengers for July 2015	308,500
Total Passengers for July 2014	292,025
% Change Versus July 2014	5.64%



SPOKANE INTERNATIONAL AIRPORT MONTHLY TRAFFIC REPORT JULY 2015 TOTAL PASSENGER TRAFFIC COMPARISON

	2015	Percent difference	2014	2013	2012	2011
January	225,785	2.29%	220,737	210,770	215,209	232,696
February	214,933	3.12%	208,435	199,694	214,092	207,689
March	260,984	4.85%	248,904	245,021	255,948	261,285
April	239,603	4.18%	229,989	227,005	230,609	234,919
May	254,499	5.22%	241,870	242,208	248,503	250,118
June	280,098	5.02%	266,701	262,638	267,849	275,812
July	308,500	5.64%	292,025	287,204	296,393	300,474
August			289,713	286,417	300,775	306,337
September			237,078	236,363	240,131	250,950
October			247,679	241,776	244,804	249,050
November			237,296	228,168	241,381	248,729
December			266,225	259,594	249,621	258,495
Total Passengers YTD	1,784,402	4.43%	1,708,661	1,674,540	1,728,603	1,762,993

COMPARISON OF TOTAL PASSENGERS



Passenger activity reported by individual airlines

