



SPOKANE INTERNATIONAL AIRPORT MONTHLY TRAFFIC REPORT MARCH 2017

	MARCH				YEAR TO DATE			
	2017	2016	Increase (Decrease)	Percent Difference	2017	2016	Increase (Decrease)	Percent Difference
MAJOR AIRLINES:								
Passengers								
Enplaned	104,596	98,505	6,091	6.18%	274,737	269,653	5,084	1.89%
Deplaned	99,345	95,727	3,618	3.78%	264,063	266,339	(2,276)	-0.85%
Sub-total	203,941	194,232	9,709	5.00%	538,800	535,992	2,808	0.52%
REGIONAL AIRLINES:								
Passengers								
Enplaned	42,310	28,237	14,073	49.84%	112,434	82,635	29,799	36.06%
Deplaned	42,940	28,412	14,528	51.13%	116,389	83,173	33,216	39.94%
Sub-total	85,250	56,649	28,601	50.49%	228,823	165,808	63,015	38.00%
TOTAL PASSENGERS	289,191	250,881	38,310	15.27%	767,623	701,800	65,823	9.38%
CARGO: Enplaned	5,465,757.00	4,789,179.00	676,578	14.13%	14,429,555.00	12,908,119.00	1,521,436	11.79%
Deplaned	7,331,572.00	7,159,605.00	171,967	2.40%	20,139,033.00	19,292,771.00	846,262	4.39%
TOTAL CARGO (in Pounds)	12,797,329.00	11,948,784.00	848,545	7.10%	34,568,588.00	32,200,889.00	2,367,698	7.35%

Passenger activity reported by individual airlines

MONTHLY AIRCRAFT ACTIVITY

	MARCH				YEAR TO DATE			
	2017	2016	Increase (Decrease)	Percent Difference	2017	2016	Increase (Decrease)	Percent Difference
Major Airlines	3,483	3,305	178	5.39%	9,661	8,927	734	8.22%
Regional Airlines	656	635	21	3.31%	1,710	1,760	(50)	-2.84%
General Aviation	621	1,085	(464)	-42.76%	1,449	2,440	(991)	-40.61%
Military	250	199	51	25.63%	328	338	(10)	-2.96%
<i>Total Itinerant</i>	<i>5,010</i>	<i>5,224</i>	<i>(214)</i>	<i>-4.10%</i>	<i>13,148</i>	<i>13,465</i>	<i>(317)</i>	<i>-2.35%</i>
<i>Total Local</i>	<i>836</i>	<i>818</i>	<i>18</i>	<i>2.20%</i>	<i>1,350</i>	<i>1,770</i>	<i>(420)</i>	<i>-23.73%</i>
TOTAL OPERATIONS	5,846	6,042	(196)	-3.24%	14,498	15,235	(737)	-4.84%

Operations activity is reported by the FEDERAL AVIATION ADMINISTRATION

	MARCH				YEAR TO DATE			
	2017	2016	Increase (Decrease)	Percent Difference	2017	2016	Increase (Decrease)	Percent Difference
Felts Field Operations Total	4,984	2,859	2,125	74.33%	10,856	8,142	2,714	33.33%

Operations activity is reported by the FEDERAL AVIATION ADMINISTRATION



**SPOKANE INTERNATIONAL AIRPORT
MONTHLY TRAFFIC REPORT
AIRLINE PASSENGER STATISTICS
MARCH 2017**

Airline	MARCH ENPLANEMENT DATA				MARCH DEPLANEMENT DATA			
	2017	2016	Diff	% change	2017	2016	Diff	% change
<i>Alaska</i>	20,459	22,566	(2,107)	-9.34%	18,081	21,447	(3,366)	-15.69%
<i>American*</i>	7,464	3,870	3,594	92.87%	7,476	3,816	3,660	95.91%
<i>Delta</i>	33,232	30,710	2,522	8.21%	32,070	30,191	1,879	6.22%
<i>Horizon</i>	42,310	28,237	14,073	49.84%	42,940	28,412	14,528	51.13%
<i>Southwest</i>	33,186	32,835	351	1.07%	31,963	31,908	55	0.17%
<i>United Airlines</i>	9,908	7,743	2,165	27.96%	9,755	7,485	2,270	30.33%
<i>Other</i>	-	-	-	100%	-	-	-	100.00%
<i>Charters</i>	347	781	(434)	0.00%	-	880	(880)	100.00%
Total Passengers	146,906	126,742	20,164	15.91%	142,285	124,139	18,146	14.62%

Passenger activity reported by individual airlines

* U. S. Airways was purchased by American Airlines and is reported under American Airlines going forward.

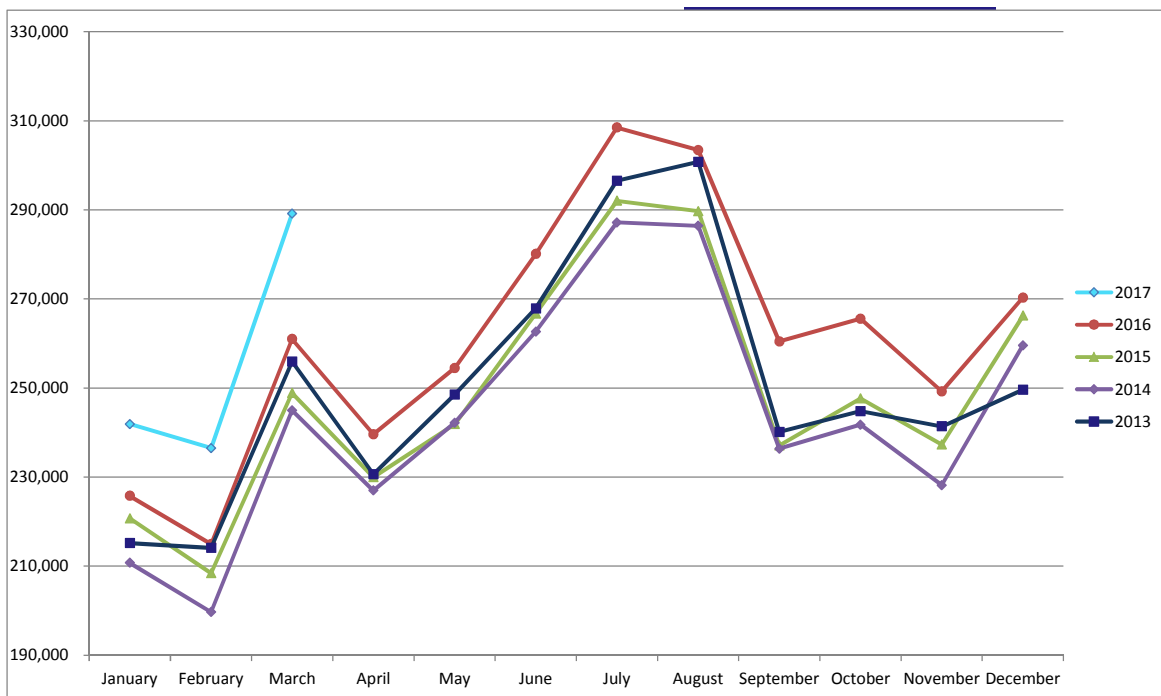
Total Passengers for MARCH 2017	289,191
Total Passengers for MARCH 2016	250,881
% Change Versus MARCH 2016	15.27%



**SPOKANE INTERNATIONAL AIRPORT
MONTHLY TRAFFIC REPORT
MARCH 2017
TOTAL PASSENGER TRAFFIC COMPARISON**

	2017	Percent difference	2016	2015	2014	2013
January	241,898	4.91%	230,576	225,785	220,737	210,770
February	236,534	7.35%	220,343	214,933	208,435	199,694
March	289,191	15.27%	250,881	260,984	248,904	245,021
April			251,955	239,603	229,989	227,005
May			263,144	254,499	241,870	242,208
June			294,561	280,098	266,701	262,638
July			311,274	308,500	292,025	287,204
August			313,002	303,403	289,713	286,417
September			272,675	260,439	237,078	236,363
October			272,060	265,563	247,679	241,776
November			273,663	249,256	237,296	228,168
December			279,961	270,279	266,225	259,594
Total Passengers YTD	767,623	9.38%	701,800	701,702	678,076	655,485

COMPARISON OF TOTAL PASSENGERS



Passenger activity reported by individual airlines