



SPOKANE INTERNATIONAL AIRPORT MONTHLY TRAFFIC REPORT NOVEMBER 2016

	NOVEMBER				YEAR TO DATE			
	2016	2015	Increase (Decrease)	Percent Difference	2016	2015	Increase (Decrease)	Percent Difference
MAJOR AIRLINES:								
Passengers								
Enplaned	91,601	89,947	1,654	1.84%	1,055,779	1,037,048	18,731	1.81%
Deplaned	97,326	87,002	10,324	11.87%	1,055,799	1,022,581	33,218	3.25%
Sub-total	188,927	176,949	11,978	6.77%	2,111,578	2,059,629	51,949	2.52%
REGIONAL AIRLINES:								
Passengers								
Enplaned	41,519	35,139	6,380	18.16%	415,465	393,065	22,400	5.70%
Deplaned	43,217	37,168	6,049	16.27%	427,091	410,369	16,722	4.07%
Sub-total	84,736	72,307	12,429	17.19%	842,556	803,434	39,122	4.87%
TOTAL PASSENGERS	273,663	249,256	24,407	9.79%	2,954,134	2,863,063	91,071	3.18%
CARGO:								
Enplaned	4,712,848.00	3,971,337.00	741,511	18.67%	49,217,099.00	47,998,515.00	1,218,584	2.54%
Deplaned	6,617,005.00	6,216,244.00	400,761	6.45%	70,992,080.00	70,394,158.05	597,922	0.85%
*TOTAL CARGO (in Pounds)	11,329,853.00	10,187,581.00	1,142,272	11.21%	120,209,179.00	118,392,673.05	1,816,506	1.53%

Passenger activity reported by individual airlines

5,138.26 4,620.22

MONTHLY AIRCRAFT ACTIVITY

	NOVEMBER				YEAR TO DATE			
	2016	2015	Increase (Decrease)	Percent Difference	2016	2015	Increase (Decrease)	Percent Difference
Major Airlines	3,306	3,070	236	7.69%	36,282	34,961	1,321	3.78%
Regional Airlines	599	570	29	5.09%	6,143	6,183	(40)	-0.65%
General Aviation	511	738	(227)	-30.76%	8,921	11,238	(2,317)	-20.62%
Military	70	121	(51)	-42.15%	1,002	1,093	(91)	-8.33%
Total Itinerant	4,486	4,499	(13)	-0.29%	52,348	53,475	(1,127)	-2.11%
Total Local	473	476	(3)	-0.63%	4,877	6,584	(1,707)	-25.93%
TOTAL OPERATIONS	4,959	4,975	(16)	-0.32%	57,225	60,059	(2,834)	-4.72%

Operations activity is reported by the FEDERAL AVIATION ADMINISTRATION

	2016	2015	Increase (Decrease)	Percent Difference	2016	2015	Increase (Decrease)	Percent Difference
Felts Field Operations Total	4,721	2,699	2,022	74.92%	51,256	49,059	2,197	4.48%

Operations activity is reported by the FEDERAL AVIATION ADMINISTRATION



SPOKANE INTERNATIONAL AIRPORT MONTHLY TRAFFIC REPORT AIRLINE PASSENGER STATISTICS NOVEMBER 2016

Airline	NOVEMBER ENPLANEMENT DATA				NOVEMBER DEPLANEMENT DATA			
	2016	2015	Diff	% change	2016	2015	Diff	% change
Alaska	15,940	18,961	(3,021)	-15.93%	13,738	17,048	(3,310)	-19.42%
American*	3,388	3,955	(567)	-14.34%	3,483	3,677	(194)	-5.28%
Delta	31,161	28,629	2,532	8.84%	39,390	28,542	10,848	38.01%
Horizon	41,519	35,139	6,380	18.16%	43,217	37,168	6,049	16.27%
Southwest	31,176	29,132	2,044	7.02%	30,865	28,761	2,104	7.32%
United Airlines	9,600	9,016	584	6.48%	9,513	8,799	714	8.11%
Other	-	-	-	0.00%	-	-	-	0.00%
Charters	336	254	82	100.00%	337	175	162	100.00%
Total Passengers	133,120	125,086	8,034	6.42%	140,543	124,170	16,373	13.19%

Passenger activity reported by individual airlines

* U. S. Airways was purchased by American Airlines and is reported under American Airlines going forward.

Total Passengers for NOVEMBER 2016	273,663
Total Passengers for NOVEMBER 2015	249,256
% Change Versus NOVEMBER 2015	9.79%

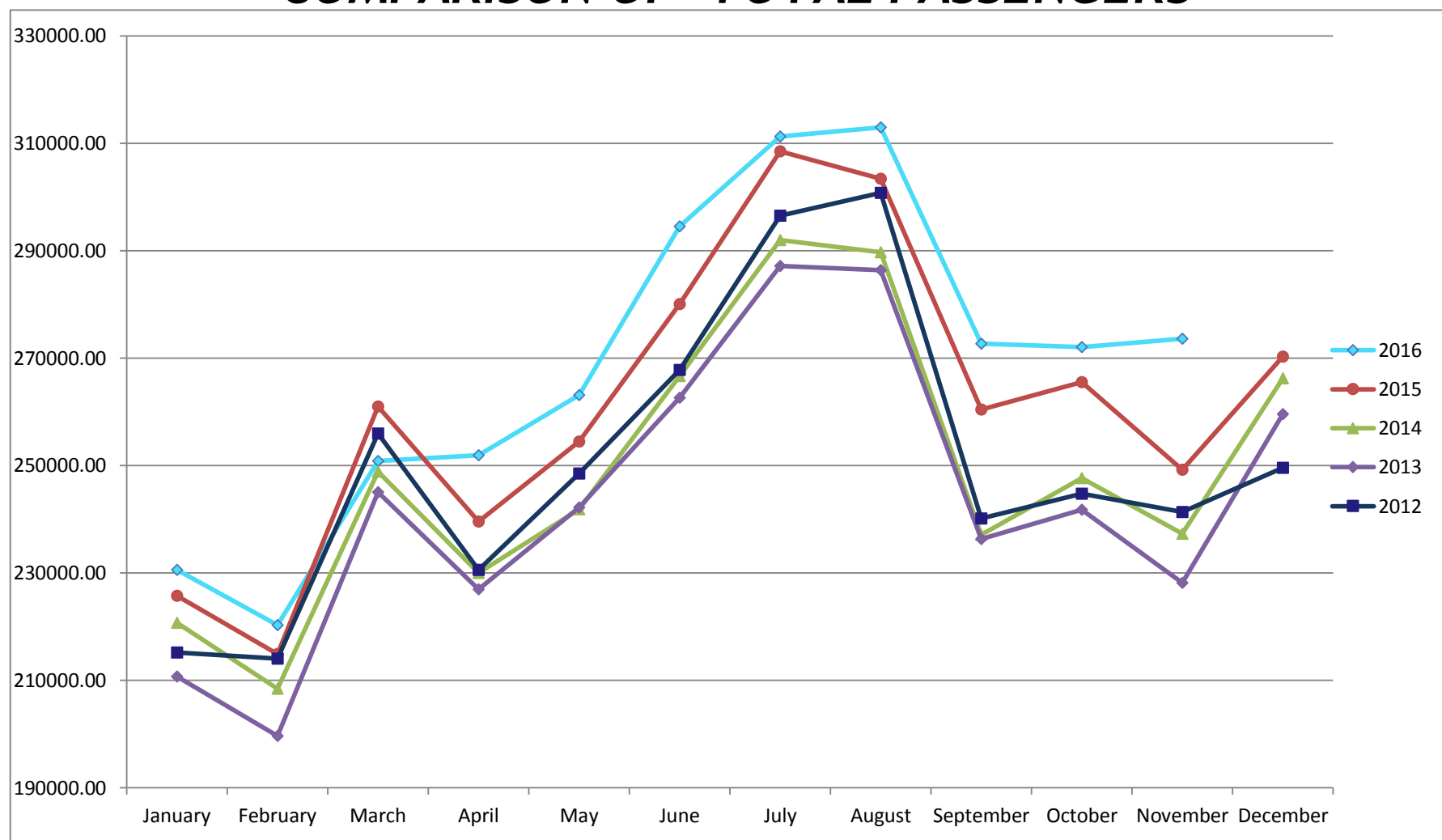


SPOKANE INTERNATIONAL AIRPORT MONTHLY TRAFFIC REPORT NOVEMBER 2016

TOTAL PASSENGER TRAFFIC COMPARISON

	2016	Percent difference	2015	2014	2013	2012
<i>January</i>	230,576	2.12%	225,785	220,737	210,770	215,209
<i>February</i>	220,343	2.52%	214,933	208,435	199,694	214,092
<i>March</i>	250,881	-3.87%	260,984	248,904	245,021	255,948
<i>April</i>	251,955	5.16%	239,603	229,989	227,005	230,609
<i>May</i>	263,144	3.40%	254,499	241,870	242,208	248,503
<i>June</i>	294,561	5.16%	280,098	266,701	262,638	267,849
<i>July</i>	311,274	0.90%	308,500	292,025	287,204	296,393
<i>August</i>	313,002	3.16%	303,403	289,713	286,417	300,775
<i>September</i>	272,675	4.70%	260,439	237,078	236,363	240,131
<i>October</i>	272,060	2.45%	265,563	247,679	241,776	244,804
<i>November</i>	273,663	9.79%	249,256	237,296	228,168	241,381
<i>December</i>			270,279	266,225	259,594	249,621
Total Passengers YTD	2,954,134	3.18%	2,863,063	2,720,427	2,667,264	2,755,694

COMPARISON OF TOTAL PASSENGERS



Passenger activity reported by individual airlines