



## SPOKANE INTERNATIONAL AIRPORT MONTHLY TRAFFIC REPORT SEPTEMBER 2016

	SEPTEMBER				YEAR TO DATE			
	2016	2015	Increase (Decrease)	Percent Difference	2016	2015	Increase (Decrease)	Percent Difference
<b>MAJOR AIRLINES:</b>								
Passengers								
Enplaned	97,163	95,894	1,269	1.32%	773,275	852,540	(79,265)	-9.30%
Deplaned	93,114	90,938	2,176	2.39%	774,560	842,712	(68,152)	-8.09%
Sub-total	190,277	186,832	3,445	1.84%	1,547,835	1,695,252	(147,417)	-8.70%
<b>REGIONAL AIRLINES:</b>								
Passengers								
Enplaned	40,577	36,648	3,929	10.72%	289,948	319,174	(29,226)	-9.16%
Deplaned	41,821	36,959	4,862	13.16%	297,953	333,818	(35,865)	-10.74%
Sub-total	82,398	73,607	8,791	11.94%	587,901	652,992	(65,091)	-9.97%
<b>TOTAL PASSENGERS</b>	<b>272,675</b>	<b>260,439</b>	<b>12,236</b>	<b>4.70%</b>	<b>2,135,736</b>	<b>2,348,244</b>	<b>(212,508)</b>	<b>-9.05%</b>
<b>CARGO: Enplaned</b>	<b>4,828,373.00</b>	<b>4,441,160.00</b>	<b>387,213</b>	<b>8.72%</b>	<b>39,873,725.00</b>	<b>39,077,751.00</b>	<b>795,974</b>	<b>2.04%</b>
<b>    Deplaned</b>	<b>6,549,904.00</b>	<b>6,757,160.00</b>	<b>(207,256)</b>	<b>-3.07%</b>	<b>58,048,549.00</b>	<b>57,252,680.00</b>	<b>795,869</b>	<b>1.39%</b>
<b>*TOTAL CARGO (in Pounds)</b>	<b>11,378,277.00</b>	<b>11,198,320.00</b>	<b>179,957</b>	<b>1.61%</b>	<b>97,922,274.00</b>	<b>96,330,431.00</b>	<b>1,591,843</b>	<b>1.65%</b>

Passenger activity reported by individual airlines

### MONTHLY AIRCRAFT ACTIVITY

	SEPTEMBER				YEAR TO DATE			
	2016	2015	Increase (Decrease)	Percent Difference	2016	2015	Increase (Decrease)	Percent Difference
Major Airlines	3,421	3,226	195	6.04%	29,524	28,583	941	3.29%
Regional Airlines	502	619	(117)	-18.90%	5,054	4,995	59	1.18%
General Aviation	706	1,289	(583)	-45.23%	7,835	9,468	(1,633)	-17.25%
Military	151	154	(3)	-1.95%	895	892	3	0.34%
<i>Total Itinerant</i>	<i>4,780</i>	<i>5,288</i>	<i>(508)</i>	<i>-9.61%</i>	<i>43,308</i>	<i>43,938</i>	<i>(630)</i>	<i>-1.43%</i>
<i>Total Local</i>	<i>444</i>	<i>674</i>	<i>(230)</i>	<i>-34.12%</i>	<i>3,964</i>	<i>5,214</i>	<i>(1,250)</i>	<i>-23.97%</i>
<b>TOTAL OPERATIONS</b>	<b>5,224</b>	<b>5,962</b>	<b>(738)</b>	<b>-12.38%</b>	<b>47,272</b>	<b>49,152</b>	<b>(1,880)</b>	<b>-3.82%</b>

Operations activity is reported by the FEDERAL AVIATION ADMINISTRATION

	2016	2015	Increase (Decrease)	Percent Difference	2016	2015	Increase (Decrease)	Percent Difference
Felts Field Operations Total	7,087	5,337	1,750	32.79%	42,553	42,503	50	0.12%

Operations activity is reported by the FEDERAL AVIATION ADMINISTRATION



**SPOKANE INTERNATIONAL AIRPORT  
MONTHLY TRAFFIC REPORT  
AIRLINE PASSENGER STATISTICS  
SEPTEMBER 2016**

Airline	SEPTEMBER ENPLANEMENT DATA				SEPTEMBER DEPLANEMENT DATA			
	2016	2015	Diff	% change	2016	2015	Diff	% change
Alaska	14,366	17,440	(3,074)	-17.63%	12,582	16,687	(4,105)	-24.60%
American*	6,566	6,626	(60)	-0.91%	6,586	6,448	138	2.14%
Delta	33,944	32,162	1,782	5.54%	32,650	29,878	2,772	9.28%
Horizon	40,577	36,648	3,929	10.72%	41,821	36,959	4,862	13.16%
Southwest	31,316	29,906	1,410	4.71%	30,034	28,675	1,359	4.74%
United Airlines	10,561	9,360	1,201	12.83%	10,894	8,852	2,042	23.07%
Other	-	-	-	0.00%	-	-	-	0.00%
Charters	336	400	(64)	100.00%	442	398	44	100.00%
<b>Total Passengers</b>	<b>137,666</b>	<b>132,542</b>	<b>5,124</b>	<b>3.87%</b>	<b>135,009</b>	<b>127,897</b>	<b>7,112</b>	<b>5.56%</b>

Passenger activity reported by individual airlines

\* U. S. Airways was purchased by American Airlines and is reported under American Airlines going forward.

Total Passengers for SEPTEMBER 2016	272,675
Total Passengers for SEPTEMBER 2015	260,439
% Change Versus SEPTEMBER 2015	4.70%

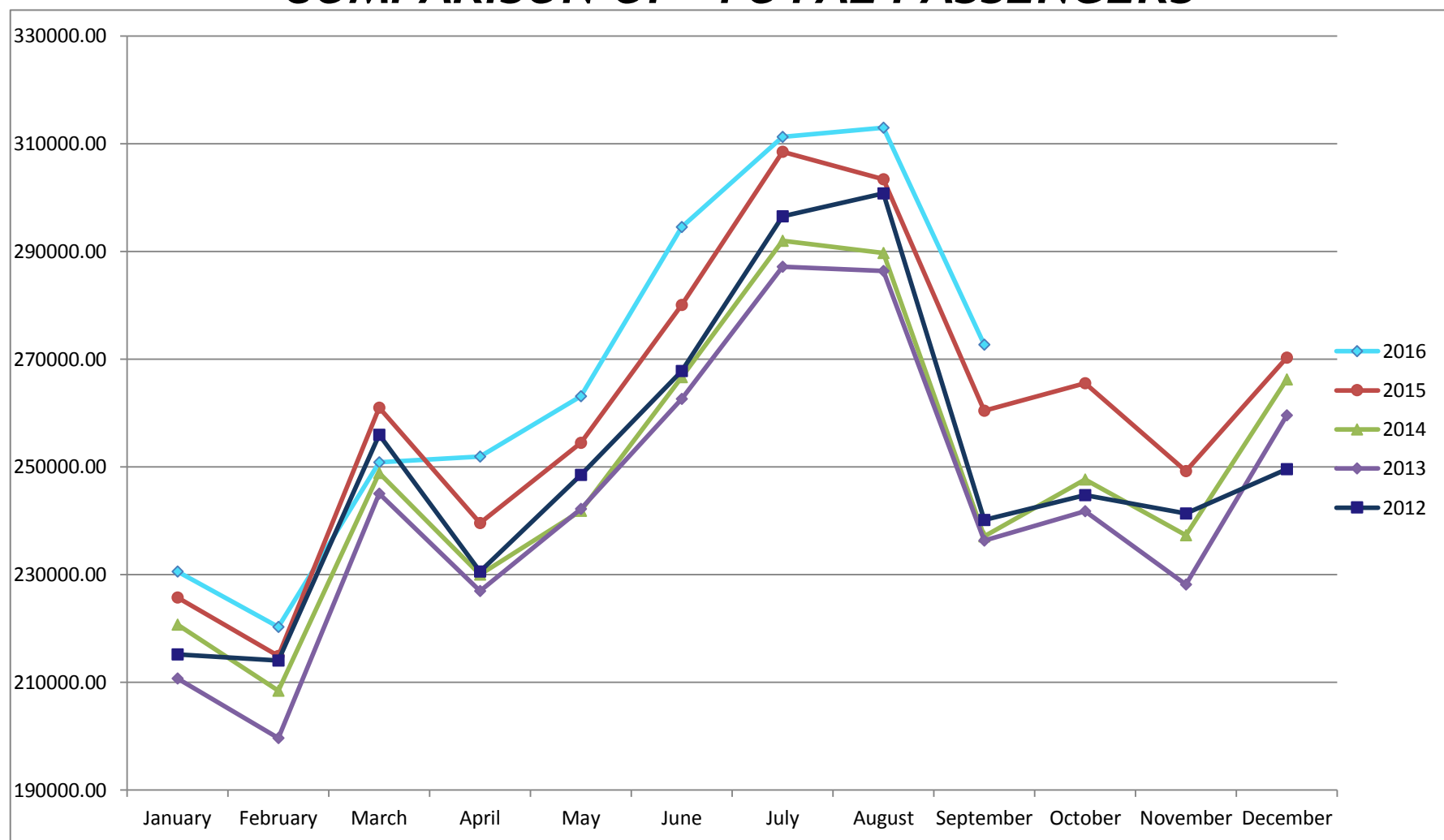


# SPOKANE INTERNATIONAL AIRPORT MONTHLY TRAFFIC REPORT SEPTEMBER 2016

## TOTAL PASSENGER TRAFFIC COMPARISON

	2016	Percent difference	2015	2014	2013	2012
January	230,576	2.12%	225,785	220,737	210,770	215,209
February	220,343	2.52%	214,933	208,435	199,694	214,092
March	250,881	-3.87%	260,984	248,904	245,021	255,948
April	251,955	5.16%	239,603	229,989	227,005	230,609
May	263,144	3.40%	254,499	241,870	242,208	248,503
June	294,561	5.16%	280,098	266,701	262,638	267,849
July	311,274	0.90%	308,500	292,025	287,204	296,393
August	313,002	3.16%	303,403	289,713	286,417	300,775
September	272,675	4.70%	260,439	237,078	236,363	240,131
October			265,563	247,679	241,776	244,804
November			249,256	237,296	228,168	241,381
December			270,279	266,225	259,594	249,621
<b>Total Passengers YTD</b>	<b>2,408,411</b>	<b>2.56%</b>	<b>2,348,244</b>	<b>2,235,452</b>	<b>2,197,320</b>	<b>2,269,509</b>

### COMPARISON OF TOTAL PASSENGERS



Passenger activity reported by individual airlines