



## SPOKANE INTERNATIONAL AIRPORT MONTHLY TRAFFIC REPORT March-21

	February				YEAR TO DATE			
	2021	2020	Increase (Decrease)	Percent Difference	2021	2020	Increase (Decrease)	Percent Difference
<b>MAJOR AIRLINES:</b>								
Passengers								
Enplaned	109,532	83,045	26,487	31.89%	258,434	384,999	(126,565)	-32.87%
Deplaned	104,011	91,696	12,315	13.43%	249,039	391,510	(142,471)	-36.39%
<b>TOTAL PASSENGERS</b>	<b>213,543</b>	<b>174,741</b>	<b>38,802</b>	<b>22.21%</b>	<b>507,473</b>	<b>776,509</b>	<b>(269,036)</b>	<b>-34.65%</b>
<b>CARGO:</b>								
Enplaned	5,200,066	4,363,781	836,285	19.16%	14,270,442	12,280,973	1,989,469	16.20%
Deplaned	7,646,147	6,749,138	897,009	13.29%	21,121,314	19,858,306	1,263,008	6.36%
<b>TOTAL CARGO (in Pounds)</b>	<b>12,846,213</b>	<b>11,112,919</b>	<b>1,733,294</b>	<b>15.60%</b>	<b>35,391,756</b>	<b>32,139,279</b>	<b>3,252,477</b>	<b>10.12%</b>

Passenger and Cargo activity reported by individual carriers

### MONTHLY AIRCRAFT ACTIVITY

	February				YEAR TO DATE			
	2021	2020	Increase (Decrease)	Percent Difference	2021	2020	Increase (Decrease)	Percent Difference
Major Airlines	3,291	3,596	(305)	-8.48%	9,129	11,248	(2,119)	-18.84%
Regional Airlines	734	885	(151)	-17.06%	2,028	2,611	(583)	-22.33%
General Aviation	668	458	210	45.85%	1,466	1,605	(139)	-8.66%
Military	99	112	(13)	-11.61%	201	277	(76)	-27.44%
<b>Total Itinerant</b>	<b>4,792</b>	<b>5,051</b>	<b>(259)</b>	<b>-5.13%</b>	<b>12,824</b>	<b>15,741</b>	<b>(2,917)</b>	<b>-18.53%</b>
<b>Total Local</b>	<b>333</b>	<b>479</b>	<b>(146)</b>	<b>-30.48%</b>	<b>845</b>	<b>1,198</b>	<b>(353)</b>	<b>-29.47%</b>
<b>TOTAL OPERATIONS</b>	<b>5,125</b>	<b>5,530</b>	<b>(405)</b>	<b>-7.32%</b>	<b>13,669</b>	<b>16,939</b>	<b>(3,270)</b>	<b>-19.30%</b>

Operations activity is reported by the FEDERAL AVIATION ADMINISTRATION

	2021	2020	Increase (Decrease)	Percent Difference	2021	2020	Increase (Decrease)	Percent Difference
Felts Field Operations Total	7,084	3,362	3,722	110.71%	15,270	10,167	5,103	50.19%

Operations activity is reported by the FEDERAL AVIATION ADMINISTRATION

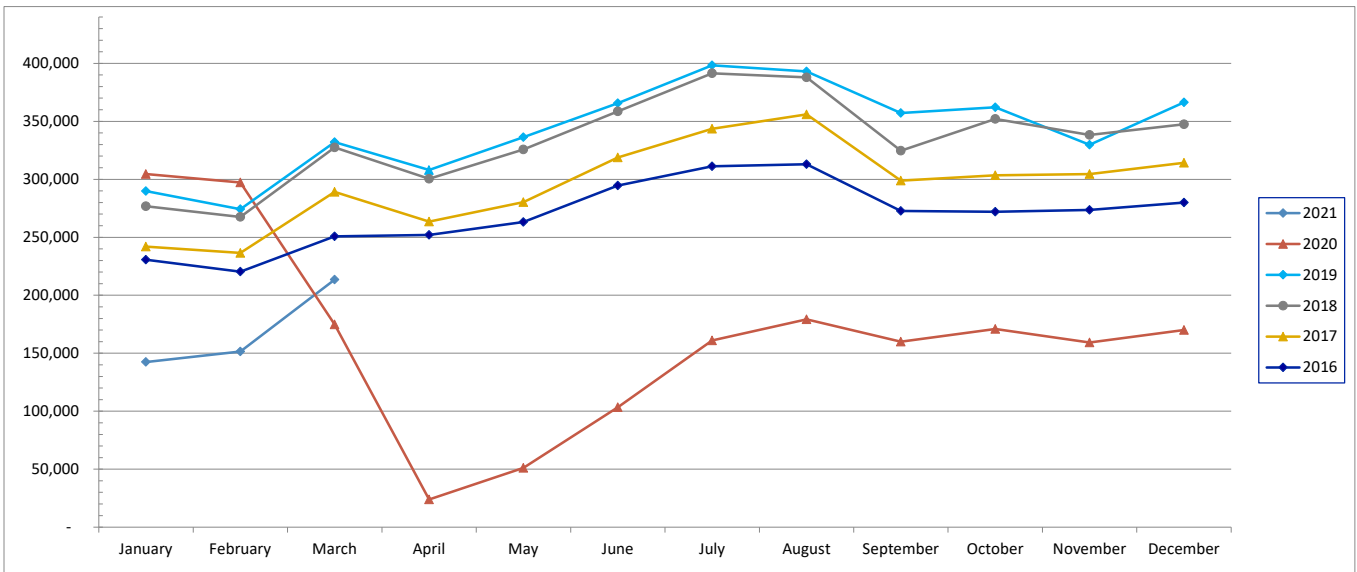


# SPOKANE INTERNATIONAL AIRPORT MONTHLY TRAFFIC REPORT March-21

## TOTAL PASSENGER TRAFFIC COMPARISON

	2021	Percent difference	2020	2019	2018	2017	2016
January	142,415	-53.24%	304,561	289,904	276,824	241,898	230,576
February	151,515	-49.02%	297,207	274,228	267,542	236,534	220,343
March	213,543	22.21%	174,741	332,082	327,459	289,191	250,881
April			23,889	308,009	300,371	263,463	251,955
May			51,032	336,265	325,695	280,274	263,144
June			103,397	365,625	358,570	318,891	294,561
July			160,945	398,323	391,420	343,599	311,274
August			179,225	393,005	387,949	356,008	313,002
September			159,920	357,241	324,647	298,781	272,675
October			170,999	362,046	352,028	303,464	272,060
November			159,315	329,723	338,306	304,566	273,663
December			170,127	366,333	347,461	314,243	279,961
<b>Total Passengers YTD</b>	<b>507,473</b>	<b>-34.65%</b>	<b>1,955,358</b>	<b>4,112,784</b>	<b>3,998,272</b>	<b>3,550,912</b>	<b>3,234,095</b>

### COMPARISON OF TOTAL PASSENGERS





**SPOKANE INTERNATIONAL AIRPORT  
MONTHLY TRAFFIC REPORT  
AIRLINE PASSENGER STATISTICS  
March-21**

	<i>Enplaned</i>				<i>Deplaned</i>			
	2021	2020	Diff	% Change	2021	2020	Diff	% Change
<i>Alaska</i>	41,963	29,026	12,937	44.57%	39,875	32,632	7,243	22.20%
<i>Allegiant</i>	877	N/A	877	N/A	645	N/A	645	N/A
<i>American</i>	12,599	5,493	7,106	129.36%	11,554	6,349	5,205	81.98%
<i>Delta</i>	18,969	18,199	770	4.23%	18,616	20,128	(1,512)	-7.51%
<i>Frontier</i>	1,002	1,476	(474)	-32.11%	1,109	1,764	(655)	-37.13%
<i>Southwest</i>	24,641	20,124	4,517	22.45%	23,141	20,824	2,317	11.13%
<i>United Airlines</i>	9,374	8,570	804	9.38%	8,964	9,843	(879)	-8.93%
<i>Charter*</i>	107	157	(50)	-31.85%	107	156	(49)	-31.41%
<b>Grand Total</b>	<b>109,532</b>	<b>83,045</b>	<b>26,487</b>	<b>31.89%</b>	<b>104,011</b>	<b>91,696</b>	<b>12,315</b>	<b>13.43%</b>

Passenger activity reported by individual airlines

Total Passengers for	March, 2021	213,543
Total Passengers for	March, 2020	174,741
% Change Versus	March, 2020	22.21%