



SPOKANE INTERNATIONAL AIRPORT MONTHLY TRAFFIC REPORT

April-20

	April				YEAR TO DATE			
	2020	2019	Increase (Decrease)	Percent Difference	2020	2019	Increase (Decrease)	Percent Difference
MAJOR AIRLINES:								
Passengers								
Enplaned	11,530	149,232	(137,702)	-92.27%	396,529	600,231	(203,702)	-33.94%
Deplaned	12,359	158,777	(146,418)	-92.22%	403,869	603,992	(200,123)	-33.13%
TOTAL PASSENGERS	23,889	308,009	(284,120)	-92.24%	800,398	1,204,223	(403,825)	-33.53%
CARGO: Enplaned	4,650,344	4,584,432	65,912	1.44%	16,931,317	18,315,839	(1,384,522)	-7.56%
Deplaned	6,755,043	6,753,882	1,161	0.02%	26,613,349	26,180,977	432,372	1.65%
TOTAL CARGO (in Pounds)	11,405,387	11,338,314	67,073	0.59%	43,544,666	44,496,816	(952,150)	-2.14%

Passenger activity reported by individual airlines

MONTHLY AIRCRAFT ACTIVITY

	April				YEAR TO DATE			
	2020	2019	Increase (Decrease)	Percent Difference	2020	2019	Increase (Decrease)	Percent Difference
Major Airlines	1,546	3,649	(2,103)	-57.63%	12,794	14,273	(1,479)	-10.36%
Regional Airlines	704	625	79	12.64%	3,315	2,558	757	29.59%
General Aviation	395	574	(179)	-31.18%	2,000	2,217	(217)	-9.79%
Military	76	135	(59)	-43.70%	353	377	(24)	-6.37%
<i>Total Itinerant</i>	<i>2,721</i>	<i>4,983</i>	<i>(2,262)</i>	<i>-45.39%</i>	<i>18,462</i>	<i>19,425</i>	<i>(963)</i>	<i>-4.96%</i>
<i>Total Local</i>	<i>381</i>	<i>64</i>	<i>317</i>	<i>495.31%</i>	<i>1,579</i>	<i>1,202</i>	<i>377</i>	<i>31.36%</i>
TOTAL OPERATIONS	3,102	5,047	(1,945)	-38.54%	20,041	20,627	(586)	-2.84%

Operations activity is reported by the FEDERAL AVIATION ADMINISTRATION

	2020	2019	Increase (Decrease)	Percent Difference	2020	2019	Increase (Decrease)	Percent Difference
Felts Field Operations Total	2,223	5,595	(3,372)	-60.27%	12,390	17,136	(4,746)	-27.70%

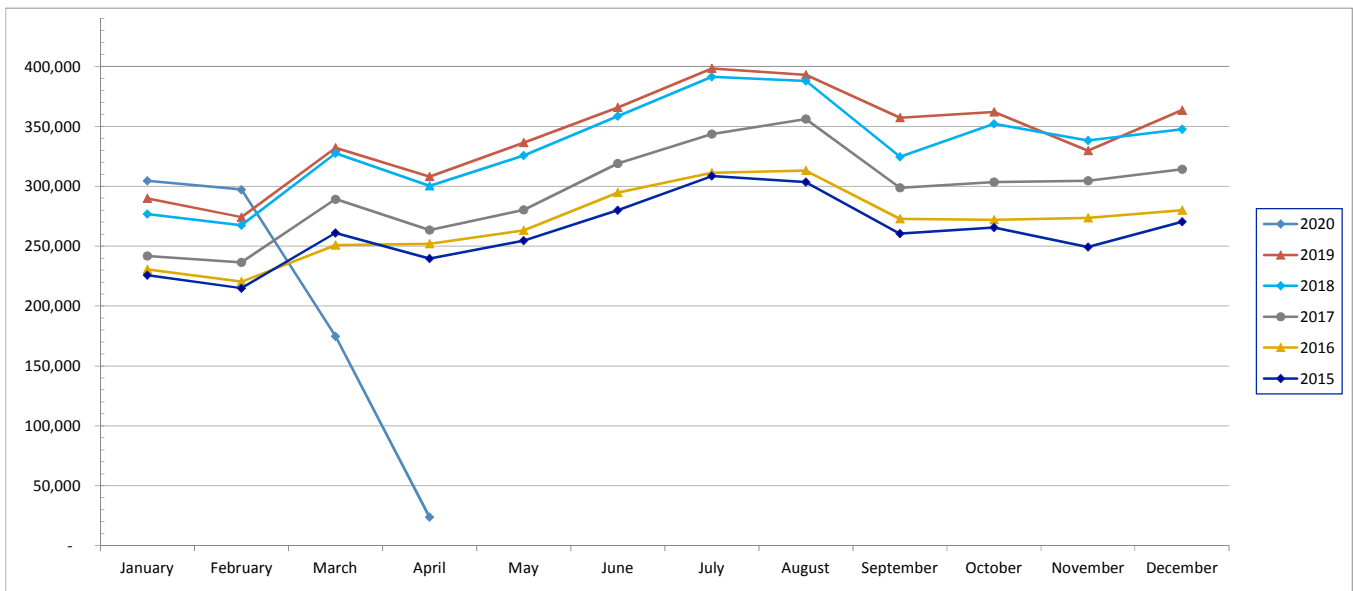
Operations activity is reported by the FEDERAL AVIATION ADMINISTRATION



SPOKANE INTERNATIONAL AIRPORT MONTHLY TRAFFIC REPORT April-20 TOTAL PASSENGER TRAFFIC COMPARISON

	2020	Percent difference	2019	2018	2017	2016	2015
January	304,561	5.06%	289,904	276,824	241,898	230,576	225,785
February	297,207	8.38%	274,228	267,542	236,534	220,343	214,933
March	174,741	-47.38%	332,082	327,459	289,191	250,881	260,984
April	23,889	-92.24%	308,009	300,371	263,463	251,955	239,603
May			336,265	325,695	280,274	263,144	254,499
June			365,625	358,570	318,891	294,561	280,098
July			398,323	391,420	343,599	311,274	308,500
August			393,005	387,949	356,008	313,002	303,403
September			357,241	324,647	298,781	272,675	260,439
October			362,046	352,028	303,464	272,060	265,563
November			329,723	338,306	304,566	273,663	249,256
December			363,455	347,461	314,243	279,961	270,279
Total Passengers YTD	800,398	-33.53%	1,204,223	1,172,196	1,031,086	953,755	941,305

COMPARISON OF TOTAL PASSENGERS





**SPOKANE INTERNATIONAL AIRPORT
MONTHLY TRAFFIC REPORT
AIRLINE PASSENGER STATISTICS
April-20**

	<i>Enplaned</i>				<i>Deplaned</i>			
	2020	2019	Diff	% Change	2020	2019	Diff	% Change
<i>Alaska</i>	4,063	50,907	(46,844)	-92.02%	4,210	53,131	(48,921)	-92.08%
<i>American</i>	1,540	8,915	(7,375)	-82.73%	1,673	9,799	(8,126)	-82.93%
<i>Delta</i>	2,292	35,304	(33,012)	-93.51%	2,658	37,937	(35,279)	-92.99%
<i>Frontier</i>	56	1,456	(1,400)	-96.15%	52	1,694	(1,642)	-96.93%
<i>Southwest</i>	3,063	36,572	(33,509)	-91.62%	3,214	38,807	(35,593)	-91.72%
<i>United Airlines</i>	516	15,741	(15,225)	-96.72%	552	17,072	(16,520)	-96.77%
<i>Charter*</i>	-	337	(337)	-100.00%	-	337	(337)	-100.00%
Grand Total	11,530	149,232	(137,702)	-92.27%	12,359	158,777	(146,418)	-92.22%

Passenger activity reported by individual airlines

Total Passengers for	April, 2020	23,889
Total Passengers for	April, 2019	308,009
% Change Versus	April, 2019	-92.24%