



## SPOKANE INTERNATIONAL AIRPORT MONTHLY TRAFFIC REPORT April-21

	April				YEAR TO DATE			
	2021	2020	Increase (Decrease)	Percent Difference	2021	2020	Increase (Decrease)	Percent Difference
<b>MAJOR AIRLINES:</b>								
Passengers								
Enplaned	122,053	11,530	110,523	958.57%	380,487	396,529	(16,042)	-4.05%
Deplaned	124,979	12,359	112,620	911.24%	374,018	403,869	(29,851)	-7.39%
<b>TOTAL PASSENGERS</b>	<b>247,032</b>	<b>23,889</b>	<b>223,143</b>	<b>934.08%</b>	<b>754,505</b>	<b>800,398</b>	<b>(45,893)</b>	<b>-5.73%</b>
<b>CARGO:</b>								
Enplaned	5,105,778	4,650,344	455,434	9.79%	19,376,220	16,931,317	2,444,903	14.44%
Deplaned	7,560,742	6,755,043	805,699	11.93%	28,682,056	26,613,349	2,068,707	7.77%
<b>TOTAL CARGO (in Pounds)</b>	<b>12,666,520</b>	<b>11,405,387</b>	<b>1,261,133</b>	<b>11.06%</b>	<b>48,058,276</b>	<b>43,544,666</b>	<b>4,513,610</b>	<b>10.37%</b>

Passenger and Cargo activity reported by individual carriers

### MONTHLY AIRCRAFT ACTIVITY

	April				YEAR TO DATE			
	2021	2020	Increase (Decrease)	Percent Difference	2021	2020	Increase (Decrease)	Percent Difference
Major Airlines	3,286	1,546	1,740	112.55%	12,415	12,794	(379)	-2.96%
Regional Airlines	719	704	15	2.13%	2,747	3,315	(568)	-17.13%
General Aviation	559	395	164	41.52%	2,025	2,000	25	1.25%
Military	114	76	38	50.00%	315	353	(38)	-10.76%
<b>Total Itinerant</b>	<b>4,678</b>	<b>2,721</b>	<b>1,957</b>	<b>71.92%</b>	<b>17,502</b>	<b>18,462</b>	<b>(960)</b>	<b>-5.20%</b>
<b>Total Local</b>	<b>392</b>	<b>381</b>	<b>11</b>	<b>2.89%</b>	<b>1,237</b>	<b>1,579</b>	<b>(342)</b>	<b>-21.66%</b>
<b>TOTAL OPERATIONS</b>	<b>5,070</b>	<b>3,102</b>	<b>1,968</b>	<b>63.44%</b>	<b>18,739</b>	<b>20,041</b>	<b>(1,302)</b>	<b>-6.50%</b>

Operations activity is reported by the FEDERAL AVIATION ADMINISTRATION

	2021	2020	Increase (Decrease)	Percent Difference	2021	2020	Increase (Decrease)	Percent Difference
Felts Field Operations Total	6,491	2,223	4,268	191.99%	21,761	12,390	9,371	75.63%

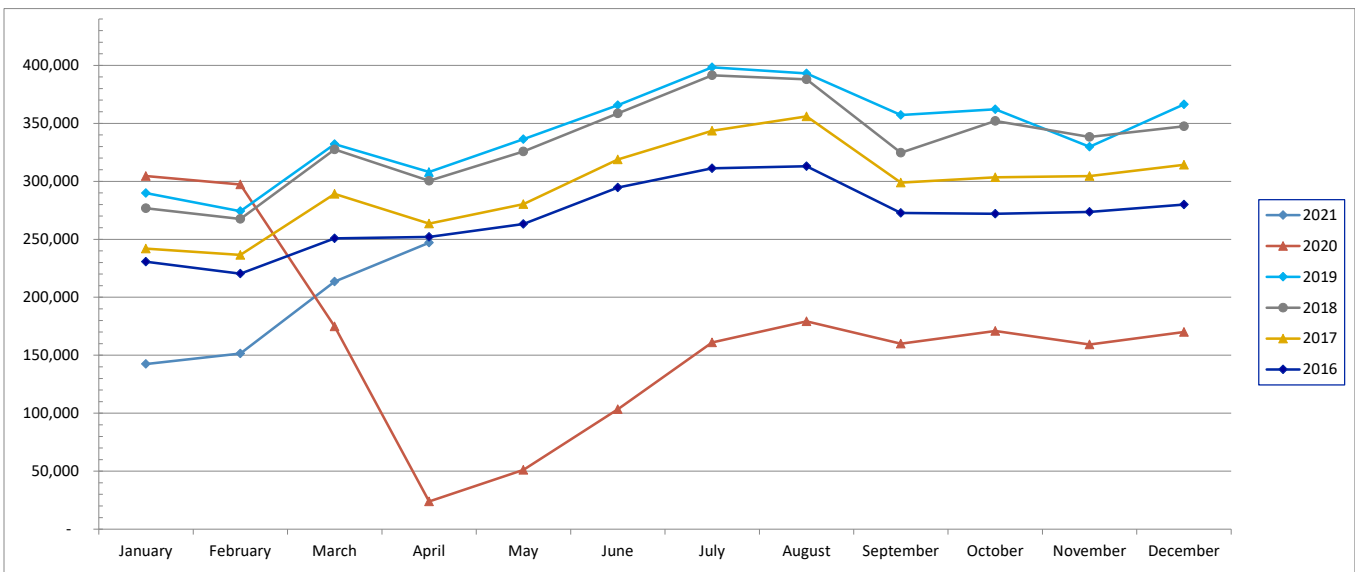
Operations activity is reported by the FEDERAL AVIATION ADMINISTRATION



# SPOKANE INTERNATIONAL AIRPORT MONTHLY TRAFFIC REPORT April-21 TOTAL PASSENGER TRAFFIC COMPARISON

	2021	Percent difference	2020	2019	2018	2017	2016
January	142,415	-53.24%	304,561	289,904	276,824	241,898	230,576
February	151,515	-49.02%	297,207	274,228	267,542	236,534	220,343
March	213,543	22.21%	174,741	332,082	327,459	289,191	250,881
April	247,032	934.08%	23,889	308,009	300,371	263,463	251,955
May			51,032	336,265	325,695	280,274	263,144
June			103,397	365,625	358,570	318,891	294,561
July			160,945	398,323	391,420	343,599	311,274
August			179,225	393,005	387,949	356,008	313,002
September			159,920	357,241	324,647	298,781	272,675
October			170,999	362,046	352,028	303,464	272,060
November			159,315	329,723	338,306	304,566	273,663
December			170,127	366,333	347,461	314,243	279,961
<b>Total Passengers YTD</b>	<b>754,505</b>	<b>-5.73%</b>	<b>1,955,358</b>	<b>4,112,784</b>	<b>3,998,272</b>	<b>3,550,912</b>	<b>3,234,095</b>

## COMPARISON OF TOTAL PASSENGERS





**SPOKANE INTERNATIONAL AIRPORT**  
**MONTHLY TRAFFIC REPORT**  
**AIRLINE PASSENGER STATISTICS**  
**April-21**

	<i>Enplaned</i>				<i>Deplaned</i>			
	2021	2020	Diff	% Change	2021	2020	Diff	% Change
<i>Alaska</i>	44,300	4,063	40,237	990.33%	46,705	4,210	42,495	1009.38%
<i>Allegiant</i>	1,324	N/A	1,324	N/A	1,097	N/A	1,097	N/A
<i>American</i>	12,977	1,540	11,437	742.66%	13,358	1,673	11,685	698.45%
<i>Delta</i>	21,878	2,292	19,586	854.54%	21,937	2,658	19,279	725.32%
<i>Frontier</i>	1,780	56	1,724	3078.57%	2,072	52	2,020	3884.62%
<i>Southwest</i>	27,827	3,063	24,764	808.49%	28,875	3,214	25,661	798.41%
<i>United Airlines</i>	11,635	516	11,119	2154.84%	10,676	552	10,124	1834.06%
<i>Charter*</i>	332	0	332	100.00%	259	0	259	100.00%
<b>Grand Total</b>	<b>122,053</b>	<b>11,530</b>	<b>110,523</b>	<b>958.57%</b>	<b>124,979</b>	<b>12,359</b>	<b>112,620</b>	<b>911.24%</b>

Passenger activity reported by individual airlines

Total Passengers for	April, 2021	247,032
Total Passengers for	April, 2020	23,889
% Change Versus	April, 2020	934.08%