



**SPOKANE INTERNATIONAL AIRPORT
MONTHLY TRAFFIC REPORT**

May-20

	May				YEAR TO DATE			
	2020	2019	Increase (Decrease)	Percent Difference	2020	2019	Increase (Decrease)	Percent Difference
MAJOR AIRLINES:								
Passengers								
Enplaned	24,631	167,158	(142,527)	-85.26%	421,160	767,389	(346,229)	-45.12%
Deplaned	26,401	169,107	(142,706)	-84.39%	430,270	773,099	(342,829)	-44.34%
TOTAL PASSENGERS	51,032	336,265	(285,233)	-84.82%	851,430	1,540,488	(689,058)	-44.73%
CARGO:								
Enplaned	4,450,411	5,006,364	(555,953)	-11.10%	21,381,728	23,322,203	(1,940,475)	-8.32%
Deplaned	6,928,654	6,909,645	19,009	0.28%	33,542,003	33,090,622	451,381	1.36%
TOTAL CARGO (in Pounds)	11,379,065	11,916,009	(536,944)	-4.51%	54,923,731	56,412,825	(1,489,094)	-2.64%

Passenger activity reported by individual airlines

MONTHLY AIRCRAFT ACTIVITY

	May				YEAR TO DATE			
	2020	2019	Increase (Decrease)	Percent Difference	2020	2019	Increase (Decrease)	Percent Difference
Major Airlines	1,284	3,847	(2,563)	-66.62%	14,078	18,120	(4,042)	-22.31%
Regional Airlines	683	605	78	12.89%	3,998	3,163	835	26.40%
General Aviation	571	703	(132)	-18.78%	2,571	2,920	(349)	-11.95%
Military	133	137	(4)	-2.92%	486	514	(28)	-5.45%
Total Itinerant	2,671	5,292	(2,621)	-49.53%	21,133	24,717	(3,584)	-14.50%
Total Local	720	566	154	27.21%	2,299	1,768	531	30.03%
TOTAL OPERATIONS	3,391	5,858	(2,467)	-42.11%	23,432	26,485	(3,053)	-11.53%

Operations activity is reported by the FEDERAL AVIATION ADMINISTRATION

	2020	2019	Increase (Decrease)	Percent Difference	2020	2019	Increase (Decrease)	Percent Difference
Felts Field Operations Total	5,328	7,996	(2,668)	-33.37%	17,718	25,132	(7,414)	-29.50%

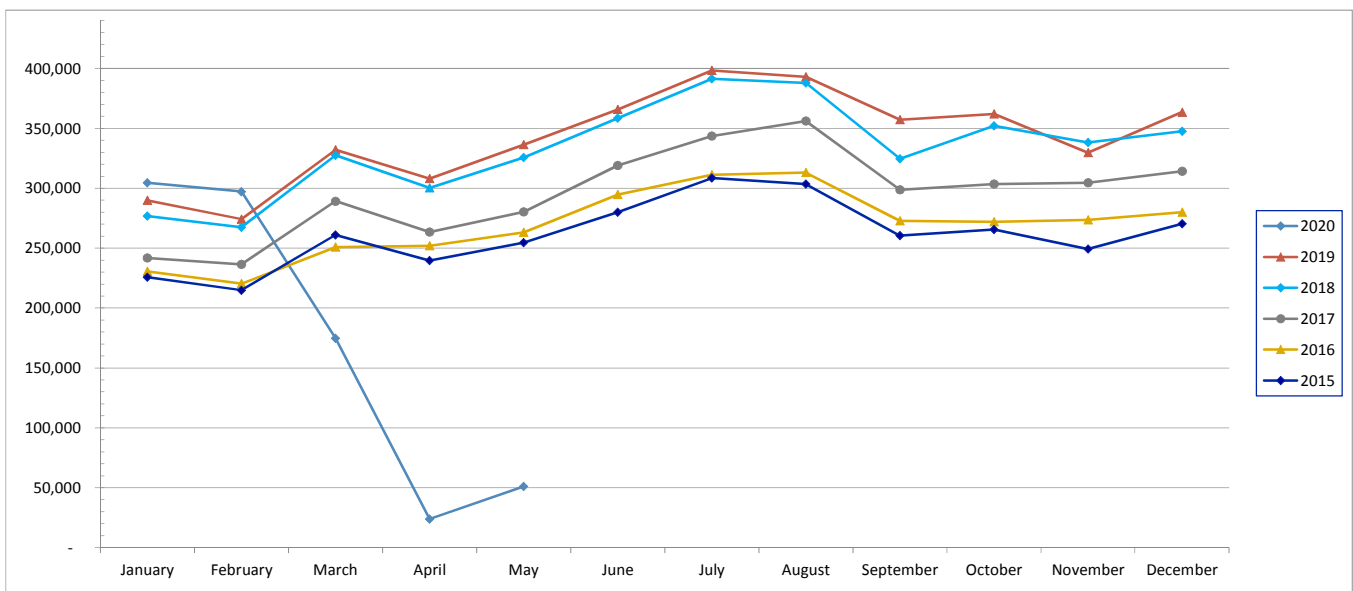
Operations activity is reported by the FEDERAL AVIATION ADMINISTRATION



SPOKANE INTERNATIONAL AIRPORT MONTHLY TRAFFIC REPORT May-20 TOTAL PASSENGER TRAFFIC COMPARISON

	2020	Percent difference	2019	2018	2017	2016	2015
January	304,561	5.06%	289,904	276,824	241,898	230,576	225,785
February	297,207	8.38%	274,228	267,542	236,534	220,343	214,933
March	174,741	-47.38%	332,082	327,459	289,191	250,881	260,984
April	23,889	-92.24%	308,009	300,371	263,463	251,955	239,603
May	51,032	-84.82%	336,265	325,695	280,274	263,144	254,499
June			365,625	358,570	318,891	294,561	280,098
July			398,323	391,420	343,599	311,274	308,500
August			393,005	387,949	356,008	313,002	303,403
September			357,241	324,647	298,781	272,675	260,439
October			362,046	352,028	303,464	272,060	265,563
November			329,723	338,306	304,566	273,663	249,256
December			363,455	347,461	314,243	279,961	270,279
Total Passengers YTD	851,430	-44.73%	1,540,488	1,497,891	1,311,360	1,216,899	1,195,804

COMPARISON OF TOTAL PASSENGERS





**SPOKANE INTERNATIONAL AIRPORT
MONTHLY TRAFFIC REPORT
AIRLINE PASSENGER STATISTICS
May-20**

	<i>Enplaned</i>				<i>Deplaned</i>			
	2020	2019	Diff	% Change	2020	2019	Diff	% Change
<i>Alaska</i>	6,853	53,901	(47,048)	-87.29%	7,670	54,004	(46,334)	-85.80%
<i>American</i>	2,760	11,609	(8,849)	-76.23%	2,910	10,896	(7,986)	-73.29%
<i>Delta</i>	5,109	40,935	(35,826)	-87.52%	5,493	40,653	(35,160)	-86.49%
<i>Frontier</i>	631	3,038	(2,407)	-79.23%	777	3,484	(2,707)	-77.70%
<i>Southwest</i>	7,407	38,686	(31,279)	-80.85%	7,840	39,824	(31,984)	-80.31%
<i>United Airlines</i>	1,871	18,774	(16,903)	-90.03%	1,711	20,246	(18,535)	-91.55%
<i>Charter*</i>	-	215	(215)	-100.00%	-	-	-	N/A
Grand Total	24,631	167,158	(142,527)	-85.26%	26,401	169,107	(142,706)	-84.39%

Passenger activity reported by individual airlines

Total Passengers for	May, 2020	51,032
Total Passengers for	May, 2019	336,265
% Change Versus	May, 2019	-84.82%