



SPOKANE INTERNATIONAL AIRPORT MONTHLY TRAFFIC REPORT May-21

	February				YEAR TO DATE			
	2021	2020	Increase (Decrease)	Percent Difference	2021	2020	Increase (Decrease)	Percent Difference
MAJOR AIRLINES:								
Passengers								
Enplaned	140,387	24,631	115,756	469.96%	520,874	421,160	99,714	23.68%
Deplaned	146,363	26,401	119,962	454.38%	520,381	430,270	90,111	20.94%
TOTAL PASSENGERS	286,750	51,032	235,718	461.90%	1,041,255	851,430	189,825	22.29%
CARGO:								
Enplaned	4,751,048	4,450,411	300,637	6.76%	24,127,268	21,381,728	2,745,540	12.84%
Deplaned	7,161,507	6,928,654	232,853	3.36%	35,843,563	33,542,003	2,301,560	6.86%
TOTAL CARGO (in Pounds)	11,912,555	11,379,065	533,490	4.69%	59,970,831	54,923,731	5,047,100	9.19%

Passenger and Cargo activity reported by individual carriers

MONTHLY AIRCRAFT ACTIVITY

	February				YEAR TO DATE			
	2021	2020	Increase (Decrease)	Percent Difference	2021	2020	Increase (Decrease)	Percent Difference
Major Airlines	3,535	1,284	2,251	175.31%	15,950	14,078	1,872	13.30%
Regional Airlines	838	683	155	22.69%	3,585	3,998	(413)	-10.33%
General Aviation	577	571	6	1.05%	2,602	2,571	31	1.21%
Military	96	133	(37)	-27.82%	411	486	(75)	-15.43%
Total Itinerant	5,046	2,671	2,375	88.92%	22,548	21,133	1,415	6.70%
Total Local	471	720	(249)	-34.58%	1,708	2,299	(591)	-25.71%
TOTAL OPERATIONS	5,517	3,391	2,126	62.70%	24,256	23,432	824	3.52%

Operations activity is reported by the FEDERAL AVIATION ADMINISTRATION

	2021	2020	Increase (Decrease)	Percent Difference	2021	2020	Increase (Decrease)	Percent Difference
Felts Field Operations Total	7,796	5,328	2,468	46.32%	29,557	17,718	11,839	66.82%

Operations activity is reported by the FEDERAL AVIATION ADMINISTRATION

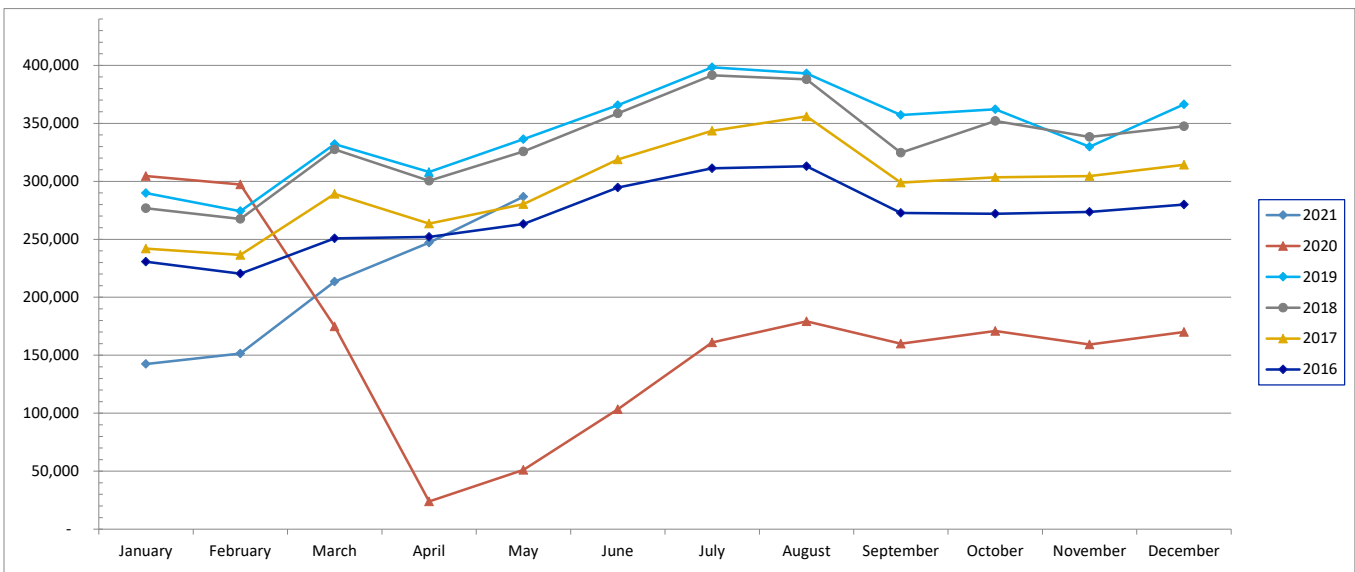


SPOKANE INTERNATIONAL AIRPORT MONTHLY TRAFFIC REPORT May-21

TOTAL PASSENGER TRAFFIC COMPARISON

	2021	Percent difference	2020	2019	2018	2017	2016
January	142,415	-53.24%	304,561	289,904	276,824	241,898	230,576
February	151,515	-49.02%	297,207	274,228	267,542	236,534	220,343
March	213,543	22.21%	174,741	332,082	327,459	289,191	250,881
April	247,032	934.08%	23,889	308,009	300,371	263,463	251,955
May	286,750	461.90%	51,032	336,265	325,695	280,274	263,144
June			103,397	365,625	358,570	318,891	294,561
July			160,945	398,323	391,420	343,599	311,274
August			179,225	393,005	387,949	356,008	313,002
September			159,920	357,241	324,647	298,781	272,675
October			170,999	362,046	352,028	303,464	272,060
November			159,315	329,723	338,306	304,566	273,663
December			170,127	366,333	347,461	314,243	279,961
Total Passengers YTD	1,041,255	-5.73%	1,955,358	4,112,784	3,998,272	3,550,912	3,234,095

COMPARISON OF TOTAL PASSENGERS





**SPOKANE INTERNATIONAL AIRPORT
MONTHLY TRAFFIC REPORT
AIRLINE PASSENGER STATISTICS
May-21**

	<i>Enplaned</i>				<i>Deplaned</i>			
	2021	2020	Diff	% Change	2021	2020	Diff	% Change
<i>Alaska</i>	47,282	6,853	40,429	589.95%	48,003	7,670	40,333	525.85%
<i>Allegiant</i>	1,099	N/A	1,099	N/A	1,115	N/A	1,115	N/A
<i>American</i>	12,588	2,760	9,828	356.09%	13,710	2,910	10,800	371.13%
<i>Delta</i>	30,336	5,109	25,227	493.78%	31,927	5,493	26,434	481.23%
<i>Frontier</i>	1,730	631	1,099	174.17%	2,201	777	1,424	183.27%
<i>Southwest</i>	32,577	7,407	25,170	339.81%	33,947	7,840	26,107	333.00%
<i>United Airlines</i>	14,663	1,871	12,792	683.70%	15,346	1,711	13,635	796.90%
<i>Charter*</i>	112	0	112	100.00%	114	0	114	100.00%
Grand Total	140,387	24,631	115,756	469.96%	146,363	26,401	119,962	454.38%

Passenger activity reported by individual airlines

Total Passengers for	May, 2021	286,750
Total Passengers for	May, 2020	51,032
% Change Versus	May, 2020	461.90%