



SPOKANE INTERNATIONAL AIRPORT MONTHLY TRAFFIC REPORT

June-20

	June				YEAR TO DATE			
	2020	2019	Increase (Decrease)	Percent Difference	2020	2019	Increase (Decrease)	Percent Difference
MAJOR AIRLINES:								
Passengers								
Enplaned	50,277	179,391	(129,114)	-71.97%	471,437	946,780	(475,343)	-50.21%
Deplaned	53,120	186,234	(133,114)	-71.48%	483,390	959,333	(475,943)	-49.61%
TOTAL PASSENGERS	103,397	365,625	(262,228)	-71.72%	954,827	1,906,113	(951,286)	-49.91%
CARGO: Enplaned	4,953,411	4,910,812	42,599	0.87%	26,335,139	28,233,015	(1,897,876)	-6.72%
Deplaned	7,115,693	6,436,687	679,006	10.55%	40,657,696	39,527,309	1,130,387	2.86%
TOTAL CARGO (in Pounds)	12,069,104	11,347,499	721,605	6.36%	66,992,835	67,760,324	(767,489)	-1.13%

Passenger activity reported by individual airlines

MONTHLY AIRCRAFT ACTIVITY

	June				YEAR TO DATE			
	2020	2019	Increase (Decrease)	Percent Difference	2020	2019	Increase (Decrease)	Percent Difference
Major Airlines	1,941	3,915	(1,974)	-50.42%	16,019	22,035	(6,016)	-27.30%
Regional Airlines	740	626	114	18.21%	4,738	3,789	949	25.05%
General Aviation	676	761	(85)	-11.17%	3,247	3,681	(434)	-11.79%
Military	220	78	142	182.05%	706	592	114	19.26%
Total Itinerant	3,577	5,380	(1,803)	-33.51%	24,710	30,097	(5,387)	-17.90%
Total Local	826	362	464	128.18%	3,125	2,130	995	46.71%
TOTAL OPERATIONS	4,403	5,742	(1,339)	-23.32%	27,835	32,227	(4,392)	-13.63%

Operations activity is reported by the FEDERAL AVIATION ADMINISTRATION

	2020	2019	Increase (Decrease)	Percent Difference	2020	2019	Increase (Decrease)	Percent Difference
Felts Field Operations Total	6,248	6,717	(469)	-6.98%	23,966	31,849	(7,883)	-24.75%

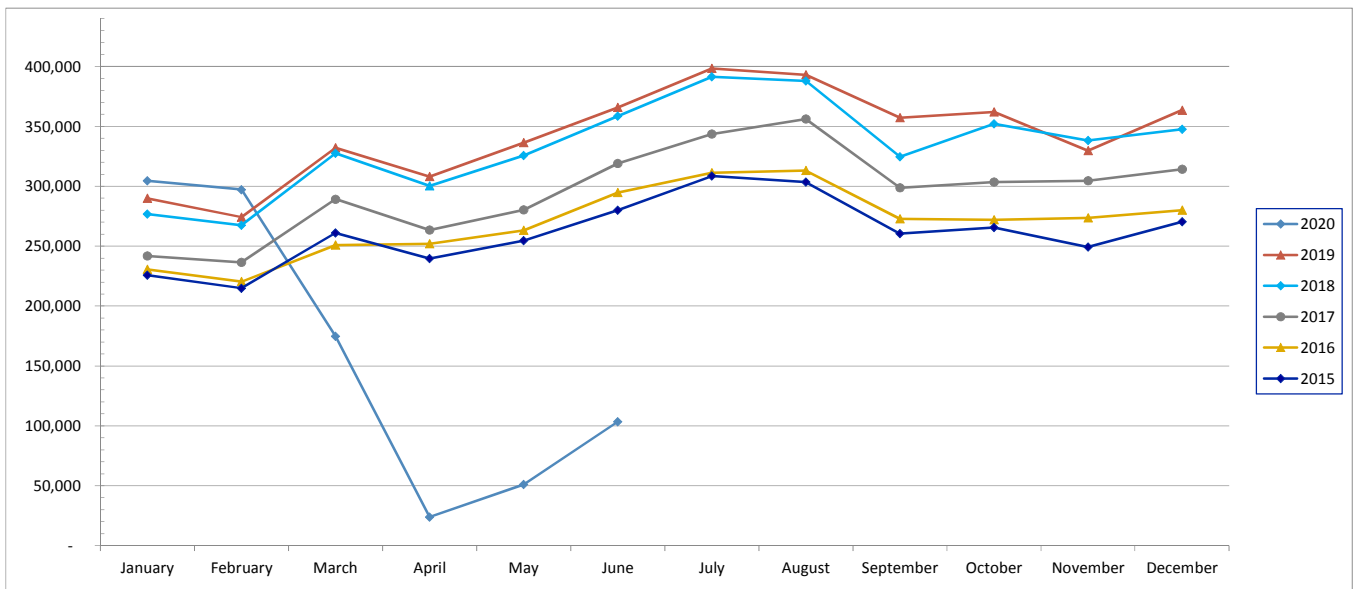
Operations activity is reported by the FEDERAL AVIATION ADMINISTRATION



SPOKANE INTERNATIONAL AIRPORT MONTHLY TRAFFIC REPORT June-20 TOTAL PASSENGER TRAFFIC COMPARISON

	2020	Percent difference	2019	2018	2017	2016	2015
January	304,561	5.06%	289,904	276,824	241,898	230,576	225,785
February	297,207	8.38%	274,228	267,542	236,534	220,343	214,933
March	174,741	-47.38%	332,082	327,459	289,191	250,881	260,984
April	23,889	-92.24%	308,009	300,371	263,463	251,955	239,603
May	51,032	-84.82%	336,265	325,695	280,274	263,144	254,499
June	103,397	-71.72%	365,625	358,570	318,891	294,561	280,098
July			398,323	391,420	343,599	311,274	308,500
August			393,005	387,949	356,008	313,002	303,403
September			357,241	324,647	298,781	272,675	260,439
October			362,046	352,028	303,464	272,060	265,563
November			329,723	338,306	304,566	273,663	249,256
December			363,455	347,461	314,243	279,961	270,279
Total Passengers YTD	954,827	-49.91%	1,906,113	1,856,461	1,630,251	1,511,460	1,475,902

COMPARISON OF TOTAL PASSENGERS





SPOKANE INTERNATIONAL AIRPORT
MONTHLY TRAFFIC REPORT
AIRLINE PASSENGER STATISTICS
June-20

	<i>Enplaned</i>				<i>Deplaned</i>			
	2020	2019	Diff	% Change	2020	2019	Diff	% Change
<i>Alaska</i>	14,695	55,456	(40,761)	-73.50%	15,143	58,367	(43,224)	-74.06%
<i>American</i>	4,968	10,693	(5,725)	-53.54%	5,105	11,095	(5,990)	-53.99%
<i>Delta</i>	8,483	47,344	(38,861)	-82.08%	9,018	46,251	(37,233)	-80.50%
<i>Frontier</i>	1,371	3,365	(1,994)	-59.26%	1,359	3,700	(2,341)	-63.27%
<i>Southwest</i>	18,036	40,708	(22,672)	-55.69%	19,726	43,792	(24,066)	-54.96%
<i>United Airlines</i>	2,724	21,825	(19,101)	-87.52%	2,769	22,809	(20,040)	-87.86%
<i>Charter*</i>	-	-	-	N/A	-	220	(220)	-100.00%
Grand Total	50,277	179,391	(129,114)	-71.97%	53,120	186,234	(133,114)	-71.48%

Passenger activity reported by individual airlines

Total Passengers for	June, 2020	103,397
Total Passengers for	June, 2019	365,625
% Change Versus	June, 2019	-71.72%