



SPOKANE INTERNATIONAL AIRPORT MONTHLY TRAFFIC REPORT June-21

	February				YEAR TO DATE			
	2021	2020	Increase (Decrease)	Percent Difference	2021	2020	Increase (Decrease)	Percent Difference
MAJOR AIRLINES:								
Passengers								
Enplaned	167,788	50,277	117,511	233.73%	688,662	471,437	217,225	46.08%
Deplaned	172,028	53,120	118,908	223.85%	692,409	483,390	209,019	43.24%
TOTAL PASSENGERS	339,816	103,397	236,419	228.65%	1,381,071	954,827	426,244	44.64%
CARGO:								
Enplaned	6,234,914	4,953,411	1,281,503	25.87%	30,362,182	26,335,139	4,027,043	15.29%
Deplaned	6,268,685	7,115,693	(847,008)	-11.90%	42,112,248	40,657,696	1,454,552	3.58%
TOTAL CARGO (in Pounds)	12,503,599	12,069,104	434,495	3.60%	72,474,430	66,992,835	5,481,595	8.18%

Passenger and Cargo activity reported by individual carriers

MONTHLY AIRCRAFT ACTIVITY

	February				YEAR TO DATE			
	2021	2020	Increase (Decrease)	Percent Difference	2021	2020	Increase (Decrease)	Percent Difference
Major Airlines	3,918	1,941	1,977	101.85%	19,868	16,019	3,849	24.03%
Regional Airlines	891	740	151	20.41%	4,476	4,738	(262)	-5.53%
General Aviation	708	676	32	4.73%	3,310	3,247	63	1.94%
Military	158	220	(62)	-28.18%	569	706	(137)	-19.41%
<i>Total Itinerant</i>	<i>5,675</i>	<i>3,577</i>	<i>2,098</i>	<i>58.65%</i>	<i>28,223</i>	<i>24,710</i>	<i>3,513</i>	<i>14.22%</i>
<i>Total Local</i>	<i>602</i>	<i>826</i>	<i>(224)</i>	<i>-27.12%</i>	<i>2,310</i>	<i>3,125</i>	<i>(815)</i>	<i>-26.08%</i>
TOTAL OPERATIONS	6,277	4,403	1,874	42.56%	30,533	27,835	2,698	9.69%

Operations activity is reported by the FEDERAL AVIATION ADMINISTRATION

	2021	2020	Increase (Decrease)	Percent Difference	2021	2020	Increase (Decrease)	Percent Difference
Felts Field Operations Total	7,573	6,248	1,325	21.21%	37,130	23,966	13,164	54.93%

Operations activity is reported by the FEDERAL AVIATION ADMINISTRATION

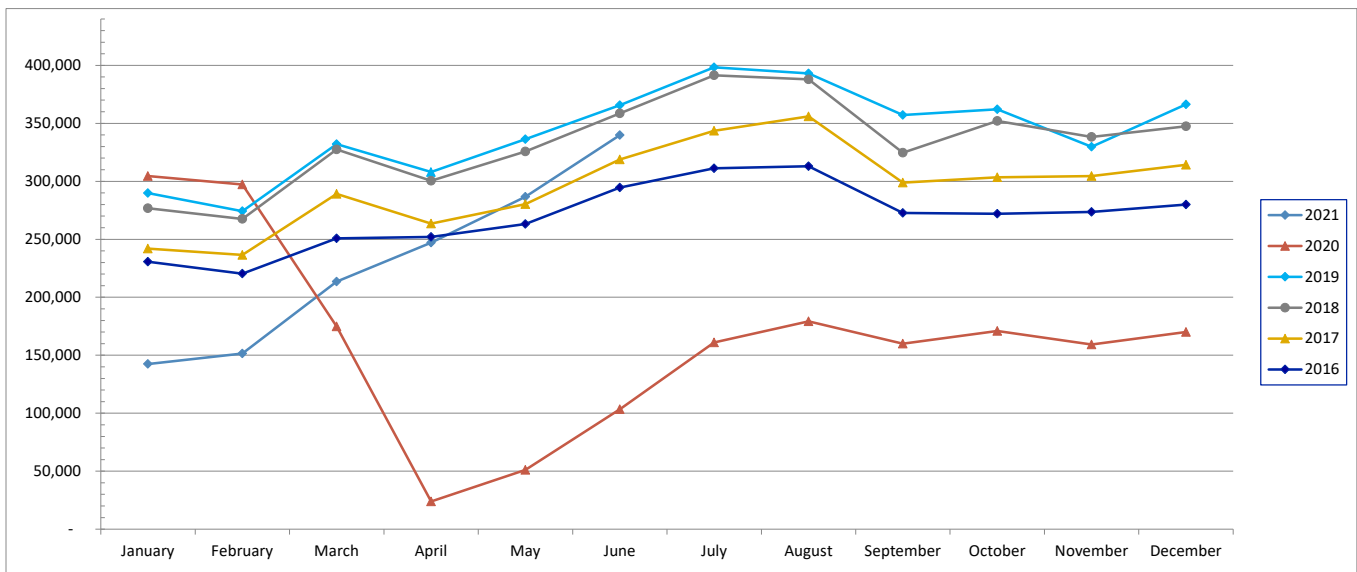


SPOKANE INTERNATIONAL AIRPORT MONTHLY TRAFFIC REPORT June-21

TOTAL PASSENGER TRAFFIC COMPARISON

	2021	Percent difference	2020	2019	2018	2017	2016
January	142,415	-53.24%	304,561	289,904	276,824	241,898	230,576
February	151,515	-49.02%	297,207	274,228	267,542	236,534	220,343
March	213,543	22.21%	174,741	332,082	327,459	289,191	250,881
April	247,032	934.08%	23,889	308,009	300,371	263,463	251,955
May	286,750	461.90%	51,032	336,265	325,695	280,274	263,144
June	339,816	228.65%	103,397	365,625	358,570	318,891	294,561
July			160,945	398,323	391,420	343,599	311,274
August			179,225	393,005	387,949	356,008	313,002
September			159,920	357,241	324,647	298,781	272,675
October			170,999	362,046	352,028	303,464	272,060
November			159,315	329,723	338,306	304,566	273,663
December			170,127	366,333	347,461	314,243	279,961
Total Passengers YTD	1,381,071	-5.73%	1,955,358	4,112,784	3,998,272	3,550,912	3,234,095

COMPARISON OF TOTAL PASSENGERS





**SPOKANE INTERNATIONAL AIRPORT
MONTHLY TRAFFIC REPORT
AIRLINE PASSENGER STATISTICS
June-21**

	<i>Enplaned</i>				<i>Deplaned</i>			
	2021	2020	Diff	% Change	2021	2020	Diff	% Change
<i>Alaska</i>	51,834	14,695	37,139	252.73%	52,537	15,143	37,394	246.94%
<i>Allegiant</i>	1,496	0	1,496	N/A	1,400	0	1,400	N/A
<i>American</i>	15,743	4,968	10,775	216.89%	17,298	5,105	12,193	238.84%
<i>Delta</i>	40,804	8,483	32,321	381.01%	40,822	9,018	31,804	352.67%
<i>Frontier</i>	1,936	1,371	565	41.21%	2,116	1,359	757	55.70%
<i>Southwest</i>	38,271	18,036	20,235	112.19%	40,528	19,726	20,802	105.45%
<i>United Airlines</i>	17,704	2,724	14,980	549.93%	17,327	2,769	14,558	525.75%
<i>Charter*</i>	0	0	0	0.00%	0	0	0	0.00%
Grand Total	167,788	50,277	117,511	233.73%	172,028	53,120	118,908	223.85%

Passenger activity reported by individual airlines

Total Passengers for	June, 2021	339,816
Total Passengers for	June, 2020	103,397
% Change Versus	June, 2020	228.65%