



**SPOKANE INTERNATIONAL AIRPORT  
MONTHLY TRAFFIC REPORT  
July-20**

	July				YEAR TO DATE			
	2020	2019	Increase (Decrease)	Percent Difference	2020	2019	Increase (Decrease)	Percent Difference
<b>MAJOR AIRLINES:</b>								
Passengers								
Enplaned	79,477	198,301	(118,824)	-59.92%	550,914	1,145,081	(594,167)	-51.89%
Deplaned	81,468	200,022	(118,554)	-59.27%	564,858	1,159,355	(594,497)	-51.28%
<b>TOTAL PASSENGERS</b>	<b>160,945</b>	<b>398,323</b>	<b>(237,378)</b>	<b>-59.59%</b>	<b>1,115,772</b>	<b>2,304,436</b>	<b>(1,188,664)</b>	<b>-51.58%</b>
CARGO: Enplaned	5,460,508	4,735,970	724,538	15.30%	31,795,647	32,968,985	(1,173,338)	-3.56%
Deplaned	7,826,103	6,417,842	1,408,261	21.94%	48,483,799	45,945,151	2,538,648	5.53%
<b>TOTAL CARGO (in Pounds)</b>	<b>13,286,611</b>	<b>11,153,812</b>	<b>2,132,799</b>	<b>19.12%</b>	<b>80,279,446</b>	<b>78,914,136</b>	<b>1,365,310</b>	<b>1.73%</b>

Passenger activity reported by individual airlines

**MONTHLY AIRCRAFT ACTIVITY**

	July				YEAR TO DATE			
	2020	2019	Increase (Decrease)	Percent Difference	2020	2019	Increase (Decrease)	Percent Difference
Major Airlines	2,775	4,162	(1,387)	-33.33%	18,794	26,197	(7,403)	-28.26%
Regional Airlines	754	728	26	3.57%	5,492	4,517	975	21.59%
General Aviation	637	794	(157)	-19.77%	3,884	4,475	(591)	-13.21%
Military	178	140	38	27.14%	884	732	152	20.77%
<b>Total Itinerant</b>	<b>4,344</b>	<b>5,824</b>	<b>(1,480)</b>	<b>-25.41%</b>	<b>29,054</b>	<b>35,921</b>	<b>(6,867)</b>	<b>-19.12%</b>
<b>Total Local</b>	<b>782</b>	<b>664</b>	<b>118</b>	<b>17.77%</b>	<b>3,907</b>	<b>2,794</b>	<b>1,113</b>	<b>39.84%</b>
<b>TOTAL OPERATIONS</b>	<b>5,126</b>	<b>6,488</b>	<b>(1,362)</b>	<b>-20.99%</b>	<b>32,961</b>	<b>38,715</b>	<b>(5,754)</b>	<b>-14.86%</b>

Operations activity is reported by the FEDERAL AVIATION ADMINISTRATION

	2020	2019	Increase (Decrease)	Percent Difference	2020	2019	Increase (Decrease)	Percent Difference
Felts Field Operations Total	6,351	5,524	827	14.97%	30,317	37,373	(7,056)	-18.88%

Operations activity is reported by the FEDERAL AVIATION ADMINISTRATION

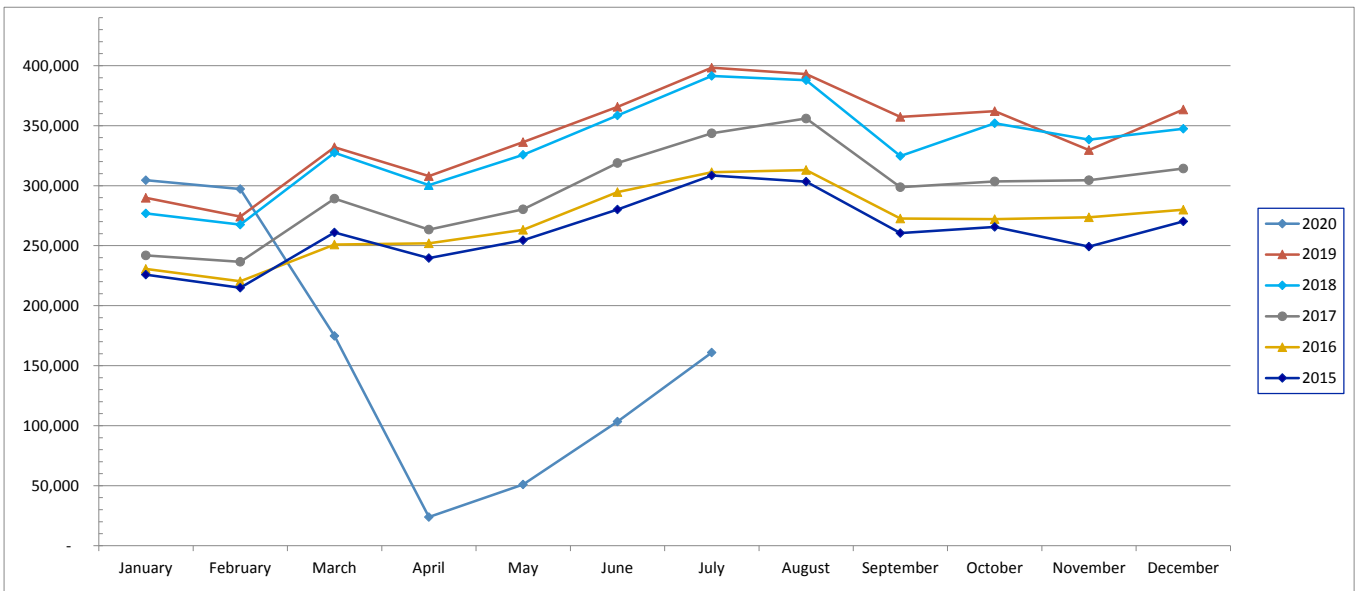


# SPOKANE INTERNATIONAL AIRPORT MONTHLY TRAFFIC REPORT July-20

## TOTAL PASSENGER TRAFFIC COMPARISON

	2020	Percent difference	2019	2018	2017	2016	2015
January	304,561	5.06%	289,904	276,824	241,898	230,576	225,785
February	297,207	8.38%	274,228	267,542	236,534	220,343	214,933
March	174,741	-47.38%	332,082	327,459	289,191	250,881	260,984
April	23,889	-92.24%	308,009	300,371	263,463	251,955	239,603
May	51,032	-84.82%	336,265	325,695	280,274	263,144	254,499
June	103,397	-71.72%	365,625	358,570	318,891	294,561	280,098
July	160,945	-59.59%	398,323	391,420	343,599	311,274	308,500
August			393,005	387,949	356,008	313,002	303,403
September			357,241	324,647	298,781	272,675	260,439
October			362,046	352,028	303,464	272,060	265,563
November			329,723	338,306	304,566	273,663	249,256
December			363,455	347,461	314,243	279,961	270,279
<b>Total Passengers YTD</b>	<b>1,115,772</b>	<b>-51.58%</b>	<b>2,304,436</b>	<b>2,247,881</b>	<b>1,973,850</b>	<b>1,822,734</b>	<b>1,784,402</b>

### COMPARISON OF TOTAL PASSENGERS





**SPOKANE INTERNATIONAL AIRPORT**  
**MONTHLY TRAFFIC REPORT**  
**AIRLINE PASSENGER STATISTICS**  
*July-20*

Period (Multiple Items)

	<i>Enplaned</i>				<i>Deplaned</i>			
	2020	2019	Diff	% Change	2020	2019	Diff	% Change
<i>Alaska</i>	23,896	58,160	(34,264)	-58.91%	25,341	59,207	(33,866)	-57.20%
<i>American</i>	7,102	12,100	(4,998)	-41.31%	6,863	12,085	(5,222)	-43.21%
<i>Delta</i>	15,391	53,346	(37,955)	-71.15%	15,541	52,649	(37,108)	-70.48%
<i>Frontier</i>	1,395	3,641	(2,246)	-61.69%	1,854	4,051	(2,197)	-54.23%
<i>Southwest</i>	23,627	46,461	(22,834)	-49.15%	23,776	47,288	(23,512)	-49.72%
<i>United Airlines</i>	8,066	24,422	(16,356)	-66.97%	8,093	24,571	(16,478)	-67.06%
<i>Charter*</i>	-	171	(171)	-100.00%	-	171	(171)	-100.00%
<b>Grand Total</b>	<b>79,477</b>	<b>198,301</b>	<b>(118,824)</b>	<b>-71.97%</b>	<b>81,468</b>	<b>200,022</b>	<b>(118,554)</b>	<b>-71.48%</b>

Passenger activity reported by individual airlines

Total Passengers for	July, 2020	160,945
Total Passengers for	July, 2019	398,323
% Change Versus	July, 2019	-59.59%