



SPOKANE INTERNATIONAL AIRPORT MONTHLY TRAFFIC REPORT July-21

	July				YEAR TO DATE			
	2021	2020	Increase (Decrease)	Percent Difference	2021	2020	Increase (Decrease)	Percent Difference
MAJOR AIRLINES:								
Passengers								
Enplaned	201,964	79,477	122,487	154.12%	890,626	550,914	339,712	61.66%
Deplaned	203,926	81,468	122,458	150.31%	896,335	564,858	331,477	58.68%
TOTAL PASSENGERS	405,890	160,945	244,945	152.19%	1,786,961	1,115,772	671,189	60.15%
CARGO:								
Enplaned	5,169,931	5,460,508	(290,577)	-5.32%	35,532,113	31,795,647	3,736,466	11.75%
Deplaned	7,666,772	7,826,103	(159,331)	-2.04%	49,779,020	48,483,799	1,295,221	2.67%
TOTAL CARGO (in Pounds)	12,836,703	13,286,611	(449,908)	-3.39%	85,311,133	80,279,446	5,031,687	6.27%

Passenger and Cargo activity reported by individual carriers

MONTHLY AIRCRAFT ACTIVITY

	July				YEAR TO DATE			
	2021	2020	Increase (Decrease)	Percent Difference	2021	2020	Increase (Decrease)	Percent Difference
Major Airlines	4,259	2,775	1,484	53.48%	24,127	18,794	5,333	28.38%
Regional Airlines	785	754	31	4.11%	5,261	5,492	(231)	-4.21%
General Aviation	807	637	170	26.69%	4,117	3,884	233	6.00%
Military	170	178	(8)	-4.49%	739	884	(145)	-16.40%
Total Itinerant	6,021	4,344	1,677	38.60%	34,244	29,054	5,190	17.86%
Total Local	697	782	(85)	-10.87%	3,007	3,907	(900)	-23.04%
TOTAL OPERATIONS	6,718	5,126	1,592	31.06%	37,251	32,961	4,290	13.02%

Operations activity is reported by the FEDERAL AVIATION ADMINISTRATION

	2021	2020	Increase (Decrease)	Percent Difference	2021	2020	Increase (Decrease)	Percent Difference
Felts Field Operations Total	7,319	6,351	968	15.24%	44,449	30,317	14,132	46.61%

Operations activity is reported by the FEDERAL AVIATION ADMINISTRATION

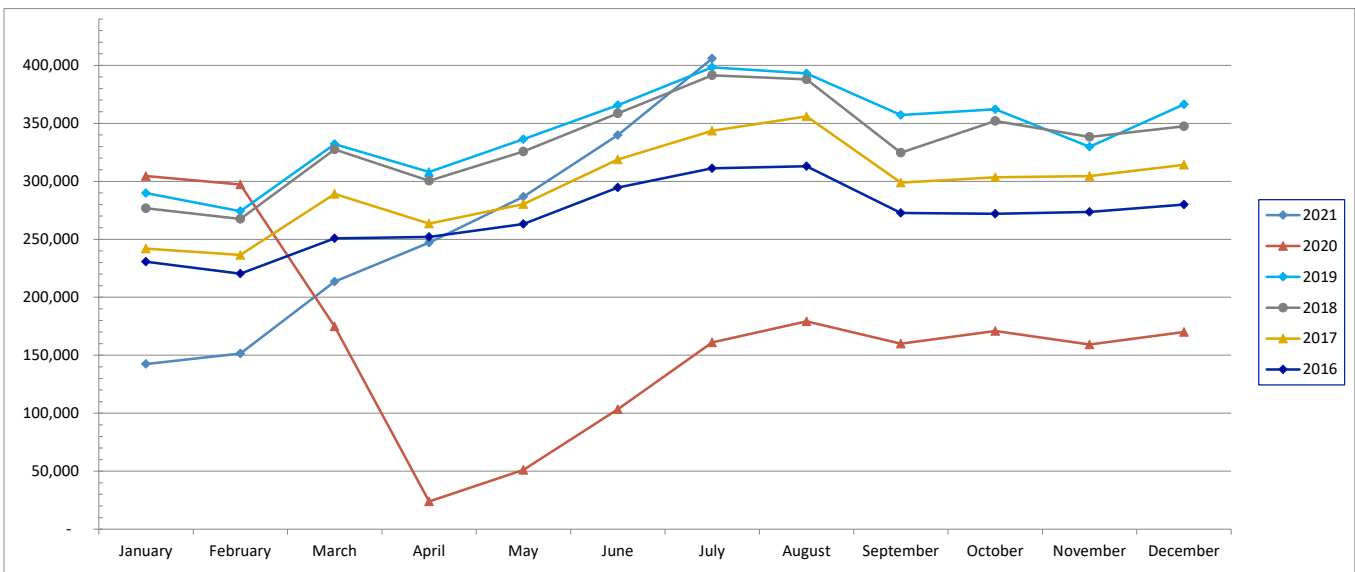


SPOKANE INTERNATIONAL AIRPORT MONTHLY TRAFFIC REPORT July-21

TOTAL PASSENGER TRAFFIC COMPARISON

	2021	Percent difference	2020	2019	2018	2017	2016
January	142,415	-53.24%	304,561	289,904	276,824	241,898	230,576
February	151,515	-49.02%	297,207	274,228	267,542	236,534	220,343
March	213,543	22.21%	174,741	332,082	327,459	289,191	250,881
April	247,032	934.08%	23,889	308,009	300,371	263,463	251,955
May	286,750	461.90%	51,032	336,265	325,695	280,274	263,144
June	339,816	228.65%	103,397	365,625	358,570	318,891	294,561
July	405,890	152.19%	160,945	398,323	391,420	343,599	311,274
August			179,225	393,005	387,949	356,008	313,002
September			159,920	357,241	324,647	298,781	272,675
October			170,999	362,046	352,028	303,464	272,060
November			159,315	329,723	338,306	304,566	273,663
December			170,127	366,333	347,461	314,243	279,961
Total Passengers YTD	1,786,961	-5.73%	1,955,358	4,112,784	3,998,272	3,550,912	3,234,095

COMPARISON OF TOTAL PASSENGERS





**SPOKANE INTERNATIONAL AIRPORT
MONTHLY TRAFFIC REPORT
AIRLINE PASSENGER STATISTICS
July-21**

	<i>Enplaned</i>				<i>Deplaned</i>			
	2021	2020	Diff	% Change	2021	2020	Diff	% Change
<i>Alaska</i>	57,024	23,896	33,128	138.63%	57,478	25,341	32,137	126.82%
<i>Allegiant</i>	1,772	0	1,772	N/A	1,756	0	1,756	N/A
<i>American</i>	18,829	7,102	11,727	165.12%	18,959	6,863	12,096	176.25%
<i>Delta</i>	48,400	15,391	33,009	214.47%	48,678	15,541	33,137	213.22%
<i>Frontier</i>	2,757	1,395	1,362	97.63%	3,044	1,854	1,190	64.19%
<i>Southwest</i>	47,432	23,627	23,805	100.75%	48,111	23,776	24,335	102.35%
<i>United Airlines</i>	25,655	8,066	17,589	218.06%	25,879	8,093	17,786	219.77%
<i>Charter*</i>	95	0	95	100.00%	21	0	21	100.00%
Grand Total	201,964	79,477	122,487	154.12%	203,926	81,468	122,458	150.31%

Passenger activity reported by individual airlines

Total Passengers for	July, 2021	405,890
Total Passengers for	July, 2020	160,945
% Change Versus	July, 2020	152.19%