



**SPOKANE INTERNATIONAL AIRPORT
MONTHLY TRAFFIC REPORT
August-20**

	August				YEAR TO DATE			
	2020	2019	Increase (Decrease)	Percent Difference	2020	2019	Increase (Decrease)	Percent Difference
MAJOR AIRLINES:								
Passengers								
Enplaned	91,594	196,635	(105,041)	-53.42%	642,508	1,341,716	(699,208)	-52.11%
Deplaned	87,631	196,370	(108,739)	-55.37%	652,489	1,355,725	(703,236)	-51.87%
TOTAL PASSENGERS	179,225	393,005	(213,780)	-54.40%	1,294,997	2,697,441	(1,402,444)	-51.99%
CARGO: Enplaned	5,082,888	4,899,127	183,761	3.75%	36,878,535	37,868,113	(989,578)	-2.61%
Deplaned	7,286,593	6,527,593	759,000	11.63%	55,770,392	52,472,744	3,297,648	6.28%
TOTAL CARGO (in Pounds)	12,369,481	11,426,720	942,761	8.25%	92,648,927	90,340,857	2,308,070	2.55%

Passenger activity reported by individual airlines

MONTHLY AIRCRAFT ACTIVITY

	August				YEAR TO DATE			
	2020	2019	Increase (Decrease)	Percent Difference	2020	2019	Increase (Decrease)	Percent Difference
Major Airlines	3,285	4,225	(940)	-22.25%	22,079	30,422	(8,343)	-27.42%
Regional Airlines	677	833	(156)	-18.73%	6,169	5,350	819	15.31%
General Aviation	728	808	(80)	-9.90%	4,612	5,283	(671)	-12.70%
Military	132	113	19	16.81%	1,016	845	171	20.24%
Total Itinerant	4,822	5,979	(1,157)	-19.35%	33,876	41,900	(8,024)	-19.15%
Total Local	633	479	154	32.15%	4,540	3,273	1,267	38.71%
TOTAL OPERATIONS	5,455	6,458	(1,003)	-15.53%	38,416	45,173	(6,757)	-14.96%

Operations activity is reported by the FEDERAL AVIATION ADMINISTRATION

	2020	2019	Increase (Decrease)	Percent Difference	2020	2019	Increase (Decrease)	Percent Difference
Felts Field Operations Total	6,150	5,540	610	11.01%	36,467	42,913	(6,446)	-15.02%

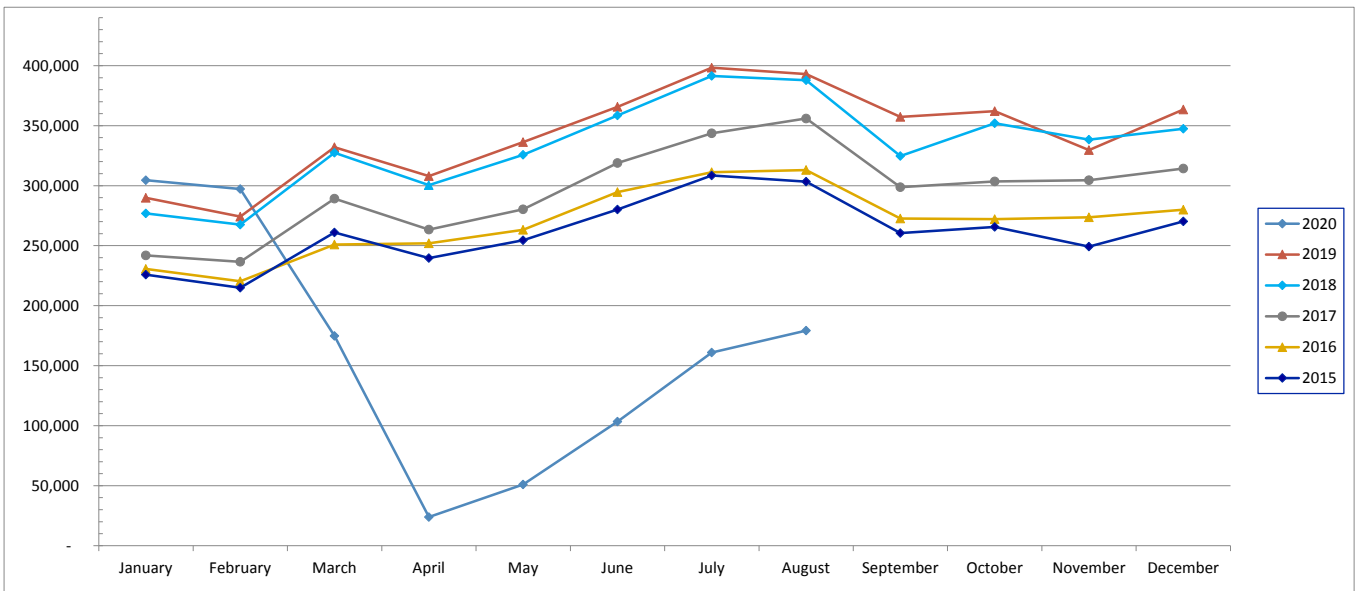
Operations activity is reported by the FEDERAL AVIATION ADMINISTRATION



SPOKANE INTERNATIONAL AIRPORT MONTHLY TRAFFIC REPORT August-20 TOTAL PASSENGER TRAFFIC COMPARISON

	2020	Percent difference	2019	2018	2017	2016	2015
January	304,561	5.06%	289,904	276,824	241,898	230,576	225,785
February	297,207	8.38%	274,228	267,542	236,534	220,343	214,933
March	174,741	-47.38%	332,082	327,459	289,191	250,881	260,984
April	23,889	-92.24%	308,009	300,371	263,463	251,955	239,603
May	51,032	-84.82%	336,265	325,695	280,274	263,144	254,499
June	103,397	-71.72%	365,625	358,570	318,891	294,561	280,098
July	160,945	-59.59%	398,323	391,420	343,599	311,274	308,500
August	179,225	-54.40%	393,005	387,949	356,008	313,002	303,403
September			357,241	324,647	298,781	272,675	260,439
October			362,046	352,028	303,464	272,060	265,563
November			329,723	338,306	304,566	273,663	249,256
December			363,455	347,461	314,243	279,961	270,279
Total Passengers YTD	1,294,997	-43.80%	2,304,436	2,247,881	1,973,850	1,822,734	1,784,402

COMPARISON OF TOTAL PASSENGERS





SPOKANE INTERNATIONAL AIRPORT
MONTHLY TRAFFIC REPORT
AIRLINE PASSENGER STATISTICS
August-20

Period (Multiple Items)

	<i>Enplaned</i>				<i>Deplaned</i>			
	2020	2019	Diff	% Change	2020	2019	Diff	% Change
<i>Alaska</i>	27,965	59,815	(31,850)	-53.25%	27,205	61,941	(34,736)	-56.08%
<i>American</i>	7,331	11,832	(4,501)	-38.04%	6,479	11,782	(5,303)	-45.01%
<i>Delta</i>	19,854	50,857	(31,003)	-60.96%	19,273	49,081	(29,808)	-60.73%
<i>Frontier</i>	1,587	3,774	(2,187)	-57.95%	1,724	3,711	(1,987)	-53.54%
<i>Southwest</i>	24,124	44,428	(20,304)	-45.70%	22,912	44,959	(22,047)	-49.04%
<i>United Airlines</i>	10,733	25,929	(15,196)	-58.61%	10,038	24,896	(14,858)	-59.68%
<i>Charter*</i>	-	-	-	N/A	-	-	-	N/A
Grand Total	91,594	196,635	(105,041)	-71.97%	87,631	196,370	(108,739)	-71.48%

Passenger activity reported by individual airlines

Total Passengers for	August, 2020	179,225
Total Passengers for	August, 2019	393,005
% Change Versus	August, 2019	-54.40%