



## SPOKANE INTERNATIONAL AIRPORT MONTHLY TRAFFIC REPORT August-21

	August				YEAR TO DATE			
	2021	2020	Increase (Decrease)	Percent Difference	2021	2020	Increase (Decrease)	Percent Difference
<b>MAJOR AIRLINES:</b>								
Passengers								
Enplaned	184,991	91,594	93,397	101.97%	1,075,617	642,508	433,109	67.41%
Deplaned	178,662	87,631	91,031	103.88%	1,074,997	652,489	422,508	64.75%
<b>TOTAL PASSENGERS</b>	<b>363,653</b>	<b>179,225</b>	<b>184,428</b>	<b>102.90%</b>	<b>2,150,614</b>	<b>1,294,997</b>	<b>855,617</b>	<b>66.07%</b>
<b>CARGO:</b>								
Enplaned	5,207,031	5,082,888	124,143	2.44%	40,739,144	36,878,535	3,860,609	10.47%
Deplaned	7,367,867	7,286,593	81,274	1.12%	57,146,887	55,770,392	1,376,495	2.47%
<b>TOTAL CARGO (in Pounds)</b>	<b>12,574,898</b>	<b>12,369,481</b>	<b>205,417</b>	<b>1.66%</b>	<b>97,886,031</b>	<b>92,648,927</b>	<b>5,237,104</b>	<b>5.65%</b>

Passenger and Cargo activity reported by individual carriers

### MONTHLY AIRCRAFT ACTIVITY

	August				YEAR TO DATE			
	2021	2020	Increase (Decrease)	Percent Difference	2021	2020	Increase (Decrease)	Percent Difference
Major Airlines	4,240	3,285	955	29.07%	28,367	22,079	6,288	28.48%
Regional Airlines	802	677	125	18.46%	6,063	6,169	(106)	-1.72%
General Aviation	780	728	52	7.14%	4,897	4,612	285	6.18%
Military	128	132	(4)	-3.03%	867	1,016	(149)	-14.67%
<b>Total Itinerant</b>	<b>5,950</b>	<b>4,822</b>	<b>1,128</b>	<b>23.39%</b>	<b>40,194</b>	<b>33,876</b>	<b>6,318</b>	<b>18.65%</b>
<b>Total Local</b>	<b>504</b>	<b>633</b>	<b>(129)</b>	<b>-20.38%</b>	<b>3,511</b>	<b>4,540</b>	<b>(1,029)</b>	<b>-22.67%</b>
<b>TOTAL OPERATIONS</b>	<b>6,454</b>	<b>5,455</b>	<b>999</b>	<b>18.31%</b>	<b>43,705</b>	<b>38,416</b>	<b>5,289</b>	<b>13.77%</b>

Operations activity is reported by the FEDERAL AVIATION ADMINISTRATION

	2021	2020	Increase (Decrease)	Percent Difference	2021	2020	Increase (Decrease)	Percent Difference
Felts Field Operations Total	6,062	6,150	(88)	-1.43%	50,511	36,437	14,074	38.63%

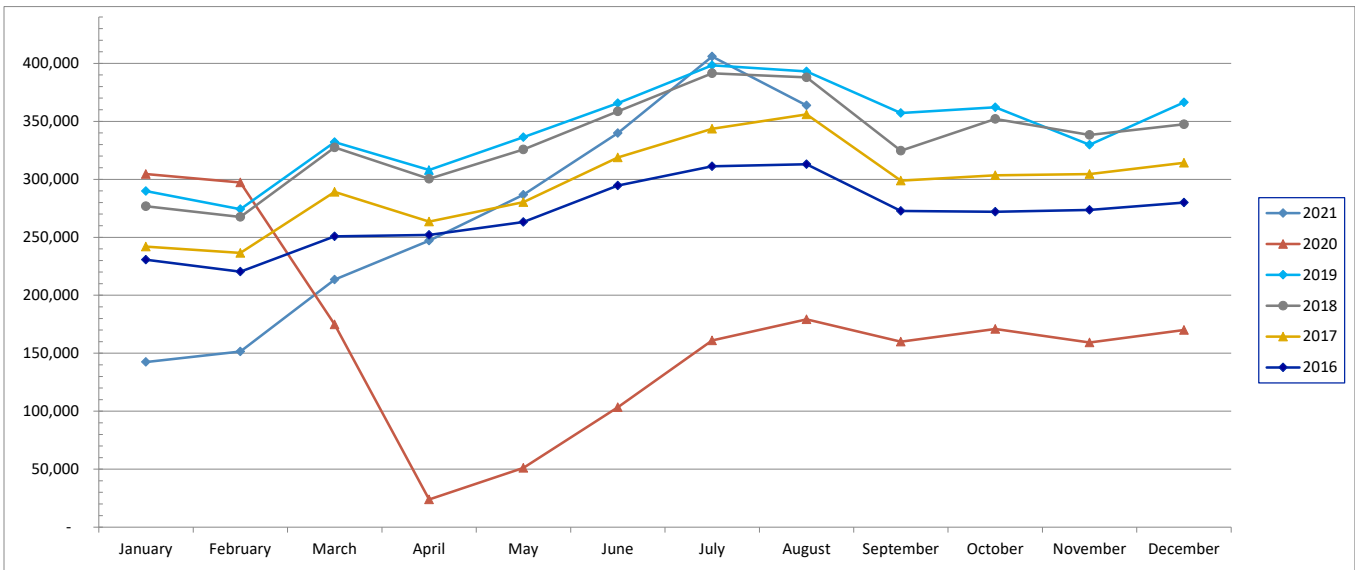
Operations activity is reported by the FEDERAL AVIATION ADMINISTRATION



# SPOKANE INTERNATIONAL AIRPORT MONTHLY TRAFFIC REPORT August-21 TOTAL PASSENGER TRAFFIC COMPARISON

	2021	Percent difference	2020	2019	2018	2017	2016
January	142,415	-53.24%	304,561	289,904	276,824	241,898	230,576
February	151,515	-49.02%	297,207	274,228	267,542	236,534	220,343
March	213,543	22.21%	174,741	332,082	327,459	289,191	250,881
April	247,032	934.08%	23,889	308,009	300,371	263,463	251,955
May	286,750	461.90%	51,032	336,265	325,695	280,274	263,144
June	339,816	228.65%	103,397	365,625	358,570	318,891	294,561
July	405,890	152.19%	160,945	398,323	391,420	343,599	311,274
August	363,653	101.97%	179,225	393,005	387,949	356,008	313,002
September			159,920	357,241	324,647	298,781	272,675
October			170,999	362,046	352,028	303,464	272,060
November			159,315	329,723	338,306	304,566	273,663
December			170,127	366,333	347,461	314,243	279,961
<b>Total Passengers YTD</b>	<b>2,150,614</b>	<b>-5.73%</b>	<b>1,955,358</b>	<b>4,112,784</b>	<b>3,998,272</b>	<b>3,550,912</b>	<b>3,234,095</b>

## COMPARISON OF TOTAL PASSENGERS





**SPOKANE INTERNATIONAL AIRPORT  
MONTHLY TRAFFIC REPORT  
AIRLINE PASSENGER STATISTICS  
August-21**

	<i>Enplaned</i>				<i>Deplaned</i>			
	2021	2020	Diff	% Change	2021	2020	Diff	% Change
<i>Alaska</i>	56,176	27,965	28,211	100.88%	54,317	27,205	27,112	99.66%
<i>Allegiant</i>	1,467	0	1,467	100.00%	1,594	0	1,594	100.00%
<i>American</i>	16,550	7,331	9,219	125.75%	16,337	6,479	9,858	152.15%
<i>Delta</i>	44,551	19,854	24,697	124.39%	43,803	19,273	24,530	127.28%
<i>Frontier</i>	3,154	1,587	1,567	98.74%	3,065	1,724	1,341	77.78%
<i>Southwest</i>	44,970	24,124	20,846	86.41%	42,374	22,912	19,462	84.94%
<i>United Airlines</i>	18,123	10,733	7,390	68.85%	17,172	10,038	7,134	71.07%
<i>Charter*</i>	0	0	0	N/A	0	0	0	N/A
<b>Grand Total</b>	<b>184,991</b>	<b>91,594</b>	<b>93,397</b>	<b>101.97%</b>	<b>178,662</b>	<b>87,631</b>	<b>91,031</b>	<b>103.88%</b>

Passenger activity reported by individual airlines

Total Passengers for	August, 2021	363,653
Total Passengers for	August, 2020	179,225
% Change Versus	August, 2020	102.90%