



SPOKANE INTERNATIONAL AIRPORT MONTHLY TRAFFIC REPORT

September-20

	September				YEAR TO DATE			
	2020	2019	Increase (Decrease)	Percent Difference	2020	2019	Increase (Decrease)	Percent Difference
MAJOR AIRLINES:								
Passengers								
Enplaned	80,844	186,011	(105,167)	-56.54%	723,352	1,527,727	(804,375)	-52.65%
Deplaned	79,076	171,230	(92,154)	-53.82%	731,565	1,526,955	(795,390)	-52.09%
TOTAL PASSENGERS	159,920	357,241	(197,321)	-55.23%	1,454,917	3,054,682	(1,599,765)	-52.37%
CARGO: Enplaned	4,663,717	3,926,596	737,121	18.77%	41,542,252	41,794,709	(252,457)	-0.60%
Deplaned	7,585,249	6,578,801	1,006,448	15.30%	63,355,641	59,051,545	4,304,096	7.29%
TOTAL CARGO (in Pounds)	12,248,966	10,505,397	1,743,569	16.60%	104,897,893	100,846,254	4,051,639	4.02%

Passenger activity reported by individual airlines

MONTHLY AIRCRAFT ACTIVITY

	September				YEAR TO DATE			
	2020	2019	Increase (Decrease)	Percent Difference	2020	2019	Increase (Decrease)	Percent Difference
Major Airlines	3,107	3,911	(804)	-20.56%	25,186	34,333	(9,147)	-26.64%
Regional Airlines	632	759	(127)	-16.73%	6,801	6,109	692	11.33%
General Aviation	543	734	(191)	-26.02%	5,155	6,017	(862)	-14.33%
Military	163	181	(18)	-9.94%	1,179	1,026	153	14.91%
<i>Total Itinerant</i>	4,445	5,585	(1,140)	-20.41%	38,321	47,485	(9,164)	-19.30%
<i>Total Local</i>	439	392	47	11.99%	4,979	3,665	1,314	35.85%
TOTAL OPERATIONS	4,884	5,977	(1,093)	-18.29%	43,300	51,150	(7,850)	-15.35%

Operations activity is reported by the FEDERAL AVIATION ADMINISTRATION

	2020	2019	Increase (Decrease)	Percent Difference	2020	2019	Increase (Decrease)	Percent Difference
Felts Field Operations Total	4,804	5,216	(412)	-7.90%	41,271	48,129	(6,858)	-14.25%

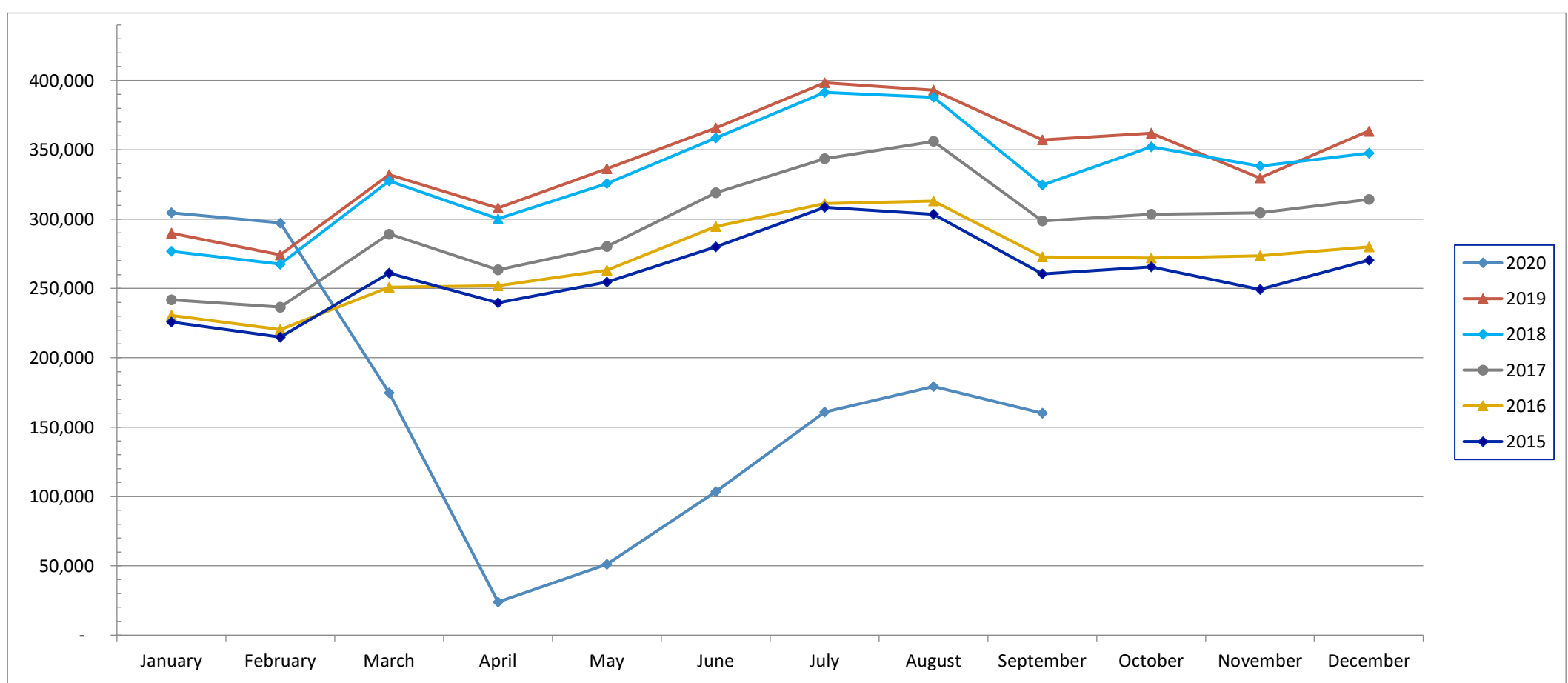
Operations activity is reported by the FEDERAL AVIATION ADMINISTRATION



SPOKANE INTERNATIONAL AIRPORT MONTHLY TRAFFIC REPORT September-20 TOTAL PASSENGER TRAFFIC COMPARISON

	2020	Percent difference	2019	2018	2017	2016	2015
January	304,561	5.06%	289,904	276,824	241,898	230,576	225,785
February	297,207	8.38%	274,228	267,542	236,534	220,343	214,933
March	174,741	-47.38%	332,082	327,459	289,191	250,881	260,984
April	23,889	-92.24%	308,009	300,371	263,463	251,955	239,603
May	51,032	-84.82%	336,265	325,695	280,274	263,144	254,499
June	103,397	-71.72%	365,625	358,570	318,891	294,561	280,098
July	160,945	-59.59%	398,323	391,420	343,599	311,274	308,500
August	179,225	-54.40%	393,005	387,949	356,008	313,002	303,403
September	159,920	-55.23%	357,241	324,647	298,781	272,675	260,439
October			362,046	352,028	303,464	272,060	265,563
November			329,723	338,306	304,566	273,663	249,256
December			363,455	347,461	314,243	279,961	270,279
Total Passengers YTD	1,454,917	-36.86%	2,304,436	2,247,881	1,973,850	1,822,734	1,784,402

COMPARISON OF TOTAL PASSENGERS





**SPOKANE INTERNATIONAL AIRPORT
MONTHLY TRAFFIC REPORT
AIRLINE PASSENGER STATISTICS
September-20**

	<i>Enplaned</i>				<i>Deplaned</i>			
	2020	2019	Diff	% Change	2020	2019	Diff	% Change
<i>Alaska</i>	24,107	64,102	(39,995)	-62.39%	24,348	63,174	(38,826)	-61.46%
<i>American</i>	10,042	10,097	(55)	-0.54%	9,385	10,001	(616)	-6.16%
<i>Delta</i>	16,972	50,857	(33,885)	-66.63%	16,669	40,151	(23,482)	-58.48%
<i>Frontier</i>	1,122	4,292	(3,170)	-73.86%	1,090	4,452	(3,362)	-75.52%
<i>Southwest</i>	18,393	37,236	(18,843)	-50.60%	17,849	35,097	(17,248)	-49.14%
<i>United Airlines</i>	10,208	19,252	(9,044)	-46.98%	9,735	18,181	(8,446)	-46.46%
<i>Charter*</i>	-	175	(175)	-100.00%	-	174	(174)	-100.00%
Grand Total	80,844	186,011	(105,167)	-71.97%	79,076	171,230	(92,154)	-71.48%

Passenger activity reported by individual airlines

Total Passengers for	September, 2020	159,920
Total Passengers for	September, 2019	357,241
% Change Versus	September, 2019	-55.23%