



## SPOKANE INTERNATIONAL AIRPORT MONTHLY TRAFFIC REPORT

**October-20**

|                                | October           |                   |                     |                    | YEAR TO DATE       |                    |                     |                    |
|--------------------------------|-------------------|-------------------|---------------------|--------------------|--------------------|--------------------|---------------------|--------------------|
|                                | 2020              | 2019              | Increase (Decrease) | Percent Difference | 2020               | 2019               | Increase (Decrease) | Percent Difference |
| <b>MAJOR AIRLINES:</b>         |                   |                   |                     |                    |                    |                    |                     |                    |
| Passengers                     |                   |                   |                     |                    |                    |                    |                     |                    |
| Enplaned                       | 87,316            | 182,661           | (95,345)            | -52.20%            | 810,668            | 1,710,388          | (899,720)           | -52.60%            |
| Deplaned                       | 83,683            | 179,385           | (95,702)            | -53.35%            | 815,248            | 1,706,340          | (891,092)           | -52.22%            |
| <b>TOTAL PASSENGERS</b>        | <b>170,999</b>    | <b>362,046</b>    | <b>(191,047)</b>    | <b>-52.77%</b>     | <b>1,625,916</b>   | <b>3,416,728</b>   | <b>(1,790,812)</b>  | <b>-52.41%</b>     |
| CARGO: Enplaned                | 5,155,049         | 4,398,435         | 756,614             | 17.20%             | 46,697,301         | 46,193,144         | 504,157             | 1.09%              |
| Deplaned                       | 8,061,691         | 7,993,191         | 68,500              | 0.86%              | 71,417,332         | 67,044,736         | 4,372,596           | 6.52%              |
| <b>TOTAL CARGO (in Pounds)</b> | <b>13,216,740</b> | <b>12,391,626</b> | <b>825,114</b>      | <b>6.66%</b>       | <b>118,114,633</b> | <b>113,237,880</b> | <b>4,876,753</b>    | <b>4.31%</b>       |

Passenger activity reported by individual airlines

### MONTHLY AIRCRAFT ACTIVITY

|                         | October      |              |                     |                    | YEAR TO DATE  |               |                     |                    |
|-------------------------|--------------|--------------|---------------------|--------------------|---------------|---------------|---------------------|--------------------|
|                         | 2020         | 2019         | Increase (Decrease) | Percent Difference | 2020          | 2019          | Increase (Decrease) | Percent Difference |
| Major Airlines          | 3,452        | 4,116        | (664)               | -16.13%            | 28,638        | 38,449        | (9,811)             | -25.52%            |
| Regional Airlines       | 755          | 799          | (44)                | -5.51%             | 7,556         | 6,908         | 648                 | 9.38%              |
| General Aviation        | 728          | 783          | (55)                | -7.02%             | 5,883         | 6,800         | (917)               | -13.49%            |
| Military                | 109          | 81           | 28                  | 34.57%             | 1,288         | 1,107         | 181                 | 16.35%             |
| <i>Total Itinerant</i>  | 5,044        | 5,779        | (735)               | -12.72%            | 43,365        | 53,264        | (9,899)             | -18.58%            |
| <i>Total Local</i>      | 620          | 553          | 67                  | 12.12%             | 5,599         | 4,218         | 1,381               | 32.74%             |
| <b>TOTAL OPERATIONS</b> | <b>5,664</b> | <b>6,332</b> | <b>(668)</b>        | <b>-10.55%</b>     | <b>48,964</b> | <b>57,482</b> | <b>(8,518)</b>      | <b>-14.82%</b>     |

Operations activity is reported by the FEDERAL AVIATION ADMINISTRATION

|                              | 2020  | 2019  | Increase (Decrease) | Percent Difference | 2020   | 2019   | Increase (Decrease) | Percent Difference |
|------------------------------|-------|-------|---------------------|--------------------|--------|--------|---------------------|--------------------|
| Felts Field Operations Total | 6,966 | 5,281 | 1,685               | 31.91%             | 48,237 | 53,410 | (5,173)             | -9.69%             |

Operations activity is reported by the FEDERAL AVIATION ADMINISTRATION

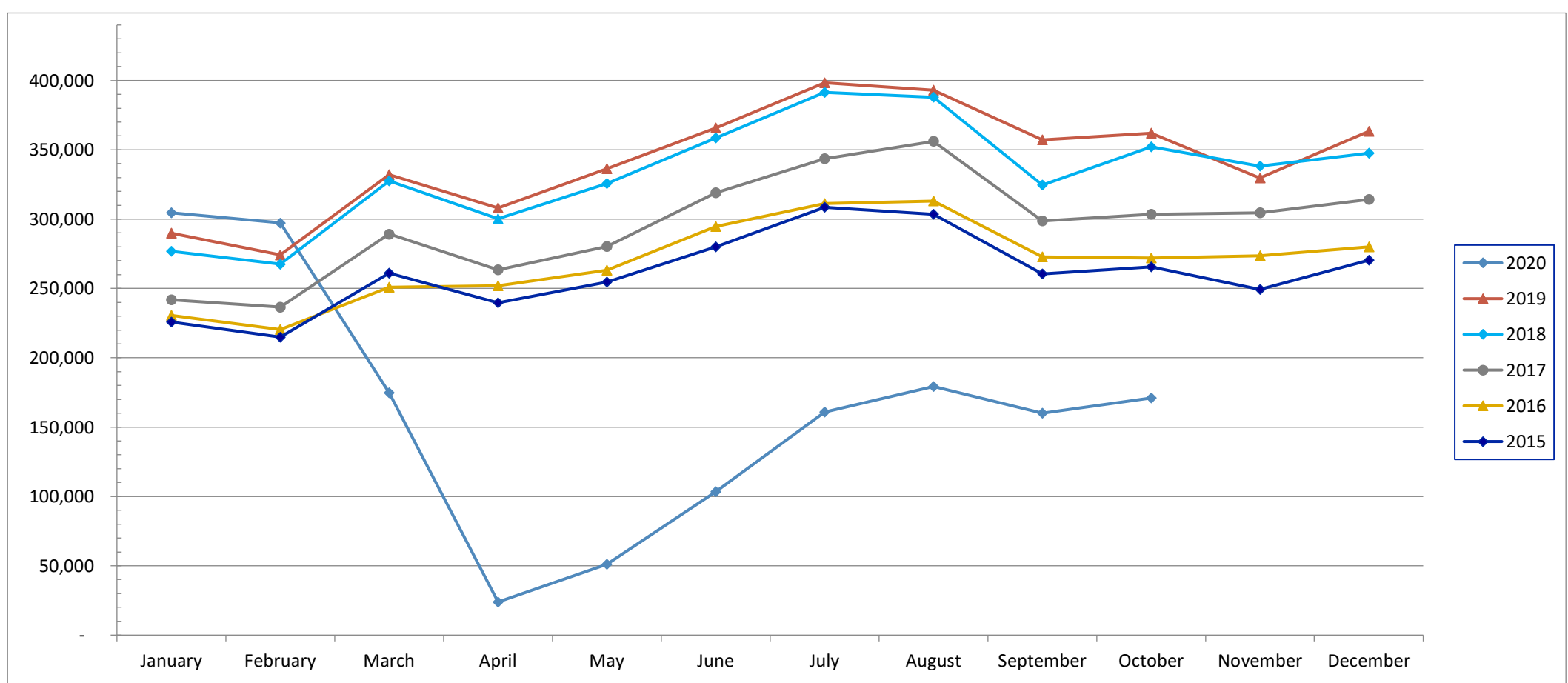


# SPOKANE INTERNATIONAL AIRPORT MONTHLY TRAFFIC REPORT October-20

## TOTAL PASSENGER TRAFFIC COMPARISON

|                             | 2020             | Percent difference | 2019             | 2018             | 2017             | 2016             | 2015             |
|-----------------------------|------------------|--------------------|------------------|------------------|------------------|------------------|------------------|
| January                     | 304,561          | 5.06%              | 289,904          | 276,824          | 241,898          | 230,576          | 225,785          |
| February                    | 297,207          | 8.38%              | 274,228          | 267,542          | 236,534          | 220,343          | 214,933          |
| March                       | 174,741          | -47.38%            | 332,082          | 327,459          | 289,191          | 250,881          | 260,984          |
| April                       | 23,889           | -92.24%            | 308,009          | 300,371          | 263,463          | 251,955          | 239,603          |
| May                         | 51,032           | -84.82%            | 336,265          | 325,695          | 280,274          | 263,144          | 254,499          |
| June                        | 103,397          | -71.72%            | 365,625          | 358,570          | 318,891          | 294,561          | 280,098          |
| July                        | 160,945          | -59.59%            | 398,323          | 391,420          | 343,599          | 311,274          | 308,500          |
| August                      | 179,225          | -54.40%            | 393,005          | 387,949          | 356,008          | 313,002          | 303,403          |
| September                   | 159,920          | -55.23%            | 357,241          | 324,647          | 298,781          | 272,675          | 260,439          |
| October                     | 170,999          | -52.77%            | 362,046          | 352,028          | 303,464          | 272,060          | 265,563          |
| November                    |                  |                    | 329,723          | 338,306          | 304,566          | 273,663          | 249,256          |
| December                    |                  |                    | 363,333          | 347,461          | 314,243          | 279,961          | 270,279          |
| <b>Total Passengers YTD</b> | <b>1,625,916</b> | <b>-52.41%</b>     | <b>3,416,728</b> | <b>3,312,505</b> | <b>2,932,103</b> | <b>2,680,471</b> | <b>2,613,807</b> |

### COMPARISON OF TOTAL PASSENGERS





**SPOKANE INTERNATIONAL AIRPORT  
MONTHLY TRAFFIC REPORT  
AIRLINE PASSENGER STATISTICS  
October-20**

|                        | <i>Enplaned</i> |                |                 |                | <i>Deplaned</i> |                |                 |                |
|------------------------|-----------------|----------------|-----------------|----------------|-----------------|----------------|-----------------|----------------|
|                        | 2020            | 2019           | Diff            | % Change       | 2020            | 2019           | Diff            | % Change       |
| <i>Alaska</i>          | 28,930          | 66,580         | (37,650)        | -56.55%        | 28,868          | 66,837         | (37,969)        | -56.81%        |
| <i>American</i>        | 12,136          | 10,480         | 1,656           | 15.80%         | 10,791          | 10,672         | 119             | 1.12%          |
| <i>Delta</i>           | 17,663          | 42,864         | (25,201)        | -58.79%        | 16,727          | 40,853         | (24,126)        | -59.06%        |
| <i>Frontier</i>        | 1,037           | 4,031          | (2,994)         | -74.27%        | 1,041           | 4,235          | (3,194)         | -75.42%        |
| <i>Southwest</i>       | 17,272          | 37,234         | (19,962)        | -53.61%        | 16,513          | 34,995         | (18,482)        | -52.81%        |
| <i>United Airlines</i> | 10,278          | 21,141         | (10,863)        | -51.38%        | 9,743           | 21,462         | (11,719)        | -54.60%        |
| <i>Charter*</i>        | -               | 331            | (331)           | -100.00%       | -               | 331            | (331)           | -100.00%       |
| <b>Grand Total</b>     | <b>87,316</b>   | <b>182,661</b> | <b>(95,345)</b> | <b>-71.97%</b> | <b>83,683</b>   | <b>179,385</b> | <b>(95,702)</b> | <b>-71.48%</b> |

Passenger activity reported by individual airlines

|                      |               |         |
|----------------------|---------------|---------|
| Total Passengers for | October, 2020 | 170,999 |
| Total Passengers for | October, 2019 | 362,046 |
| % Change Versus      | October, 2019 | -52.77% |