



## SPOKANE INTERNATIONAL AIRPORT MONTHLY TRAFFIC REPORT October-23

	October				YEAR TO DATE			
	2023	2022	Increase (Decrease)	Percent Difference	2023	2022	Increase (Decrease)	Percent Difference
<b>MAJOR AIRLINES:</b>								
Passengers								
Enplaned	180,899	181,471	(572)	-0.32%	1,730,294	1,644,063	86,231	5.24%
Deplaned	177,108	178,069	(961)	-0.54%	1,730,966	1,641,191	89,775	5.47%
<b>TOTAL PASSENGERS</b>	<b>358,007</b>	<b>359,540</b>	<b>(1,533)</b>	<b>-0.43%</b>	<b>3,461,260</b>	<b>3,285,254</b>	<b>176,006</b>	<b>5.36%</b>
<b>CARGO:</b>								
Enplaned	5,318,333	4,941,709	376,624	7.62%	57,150,138	53,522,326	3,627,812	6.78%
Deplaned	6,777,539	6,833,007	(55,468)	-0.81%	68,882,279	71,346,245	(2,463,966)	-3.45%
<b>TOTAL CARGO (in Pounds)</b>	<b>12,095,872</b>	<b>11,774,716</b>	<b>321,156</b>	<b>2.73%</b>	<b>126,032,417</b>	<b>124,868,571</b>	<b>1,163,846</b>	<b>0.93%</b>

Passenger and Cargo activity reported by individual carriers

### MONTHLY AIRCRAFT ACTIVITY

	October				YEAR TO DATE			
	2023	2022	Increase (Decrease)	Percent Difference	2023	2022	Increase (Decrease)	Percent Difference
Major Airlines	3,937	3,820	117	3.06%	38,141	36,857	1,284	3.48%
Regional Airlines	828	681	147	21.59%	7,472	7,527	(55)	-0.73%
General Aviation	785	741	44	5.94%	6,623	7,450	(827)	-11.10%
Military	71	116	(45)	-38.79%	1,022	993	29	2.92%
<i>Total Itinerant</i>	5,621	5,358	263	4.91%	53,258	52,827	431	0.82%
<i>Total Local</i>	339	351	(12)	-3.42%	3,485	3,995	(510)	-12.77%
<b>TOTAL OPERATIONS</b>	<b>5,960</b>	<b>5,709</b>	<b>251</b>	<b>4.40%</b>	<b>56,743</b>	<b>56,822</b>	<b>(79)</b>	<b>-0.14%</b>

Operations activity is reported by the FEDERAL AVIATION ADMINISTRATION

	2023	2022	Increase (Decrease)	Percent Difference	2023	2022	Increase (Decrease)	Percent Difference
Felts Field Operations Total	6,515	6,552	(37)	-0.56%	63,090	63,893	(803)	-1.26%

Operations activity is reported by the FEDERAL AVIATION ADMINISTRATION



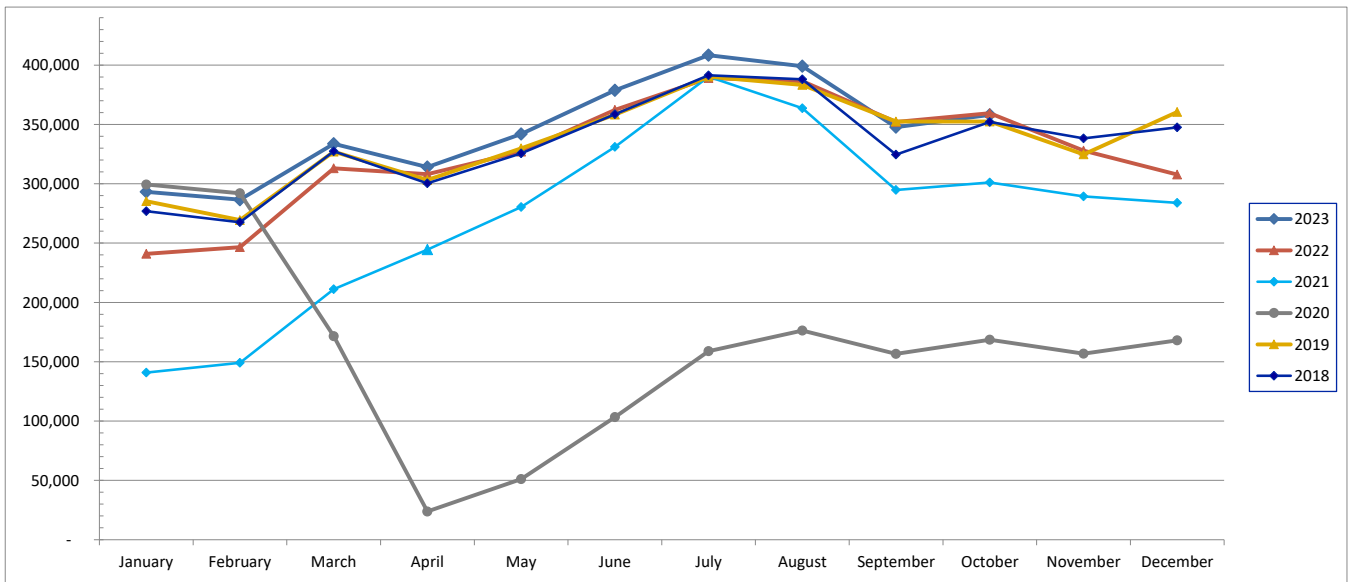
# SPOKANE INTERNATIONAL AIRPORT MONTHLY TRAFFIC REPORT

## October-23

### TOTAL PASSENGER TRAFFIC COMPARISON

	2023	Percent difference	2022	2021	2020	2019	2018
January	293,205	21.70%	240,929	140,868	299,408	285,376	276,824
February	286,612	16.21%	246,640	149,081	291,899	269,411	267,542
March	333,646	6.58%	313,053	211,122	171,517	327,030	327,459
April	313,981	1.89%	308,166	244,497	23,843	303,142	300,371
May	341,904	4.57%	326,954	280,460	51,032	329,879	325,695
June	378,760	4.53%	362,334	331,007	103,397	358,295	358,570
July	408,343	4.95%	389,101	390,211	158,889	390,254	391,420
August	399,037	3.26%	386,451	363,653	176,267	383,350	387,949
September	347,765	-1.23%	352,086	294,710	156,700	352,494	324,647
October	358,007	-0.43%	359,540	301,085	168,491	352,436	352,028
November		-100.00%	327,923	289,392	156,760	324,713	338,306
December		-100.00%	307,795	283,976	167,956	360,540	347,461
<b>Total Passengers YTD</b>	<b>3,461,260</b>	<b>5.36%</b>	<b>3,285,254</b>	<b>2,706,694</b>	<b>1,601,443</b>	<b>3,351,667</b>	<b>3,312,505</b>

### COMPARISON OF TOTAL PASSENGERS





**SPOKANE INTERNATIONAL AIRPORT**  
**MONTHLY TRAFFIC REPORT**  
**AIRLINE PASSENGER STATISTICS**  
**October-23**

	<i>Enplaned</i>				<i>Deplaned</i>			
	2023	2022	Diff	% Change	2023	2022	Diff	% Change
<i>aha!</i>	0	0	0	-100.00%	0	0	0	-100.00%
<i>Alaska</i>	58,517	54,897	3,620	6.59%	57,886	54,478	3,408	6.26%
<i>Allegiant</i>	2,867	4,438	(1,571)	-35.40%	2,687	4,337	(1,650)	-38.04%
<i>American</i>	12,935	14,303	(1,368)	-9.56%	12,537	13,890	(1,353)	-9.74%
<i>Delta</i>	51,303	48,874	2,429	4.97%	49,846	47,970	1,876	3.91%
<i>Frontier</i>	0	1,171	(1,171)	-100.00%	0	1,154	(1,154)	-100.00%
<i>Southwest</i>	38,137	43,497	(5,360)	-12.32%	37,139	42,261	(5,122)	-12.12%
<i>United</i>	16,986	13,120	3,866	29.47%	16,857	12,767	4,090	32.04%
<i>Charter</i>	154	1,171	(1,017)	n/a	156	1,212	(1,056)	n/a
<b>Grand Total</b>	<b>180,899</b>	<b>181,471</b>	<b>(572)</b>	<b>-0.32%</b>	<b>177,108</b>	<b>178,069</b>	<b>(961)</b>	<b>-0.54%</b>

Passenger activity reported by individual airlines

Total Passengers for	October 2023	358,007
Total Passengers for	October 2022	359,540
% Change Versus	October 2022	-0.43%