



## SPOKANE INTERNATIONAL AIRPORT MONTHLY TRAFFIC REPORT

**November-20**

	November				YEAR TO DATE			
	2020	2019	Increase (Decrease)	Percent Difference	2020	2019	Increase (Decrease)	Percent Difference
<b>MAJOR AIRLINES:</b>								
Passengers								
Enplaned	81,630	166,888	(85,258)	-51.09%	892,298	1,877,276	(984,978)	-52.47%
Deplaned	77,685	162,835	(85,150)	-52.29%	892,933	1,869,175	(976,242)	-52.23%
<b>TOTAL PASSENGERS</b>	<b>159,315</b>	<b>329,723</b>	<b>(170,408)</b>	<b>-51.68%</b>	<b>1,785,231</b>	<b>3,746,451</b>	<b>(1,961,220)</b>	<b>-52.35%</b>
CARGO: Enplaned	4,663,185	4,029,520	633,665	15.73%	51,360,486	50,222,664	1,137,822	2.27%
Deplaned	7,576,430	7,097,362	479,068	6.75%	78,993,762	74,142,098	4,851,664	6.54%
<b>TOTAL CARGO (in Pounds)</b>	<b>12,239,615</b>	<b>11,126,882</b>	<b>1,112,733</b>	<b>10.00%</b>	<b>130,354,248</b>	<b>124,364,762</b>	<b>5,989,486</b>	<b>4.82%</b>

Passenger activity reported by individual airlines

### MONTHLY AIRCRAFT ACTIVITY

	November				YEAR TO DATE			
	2020	2019	Increase (Decrease)	Percent Difference	2020	2019	Increase (Decrease)	Percent Difference
Major Airlines	3,433	3,882	(449)	-11.57%	32,071	42,331	(10,260)	-24.24%
Regional Airlines	683	824	(141)	-17.11%	8,239	7,732	507	6.56%
General Aviation	432	565	(133)	-23.54%	6,315	7,365	(1,050)	-14.26%
Military	38	170	(132)	-77.65%	1,326	1,277	49	3.84%
<i>Total Itinerant</i>	<i>4,586</i>	<i>5,441</i>	<i>(855)</i>	<i>-15.71%</i>	<i>47,951</i>	<i>58,705</i>	<i>(10,754)</i>	<i>-18.32%</i>
<i>Total Local</i>	<i>250</i>	<i>527</i>	<i>(277)</i>	<i>-52.56%</i>	<i>5,849</i>	<i>4,745</i>	<i>1,104</i>	<i>23.27%</i>
<b>TOTAL OPERATIONS</b>	<b>4,836</b>	<b>5,968</b>	<b>(1,132)</b>	<b>-18.97%</b>	<b>53,800</b>	<b>63,450</b>	<b>(9,650)</b>	<b>-15.21%</b>

Operations activity is reported by the FEDERAL AVIATION ADMINISTRATION

	2020	2019	Increase (Decrease)	Percent Difference	2020	2019	Increase (Decrease)	Percent Difference
Felts Field Operations Total	4,857	4,557	300	6.58%	53,094	57,967	(4,873)	-8.41%

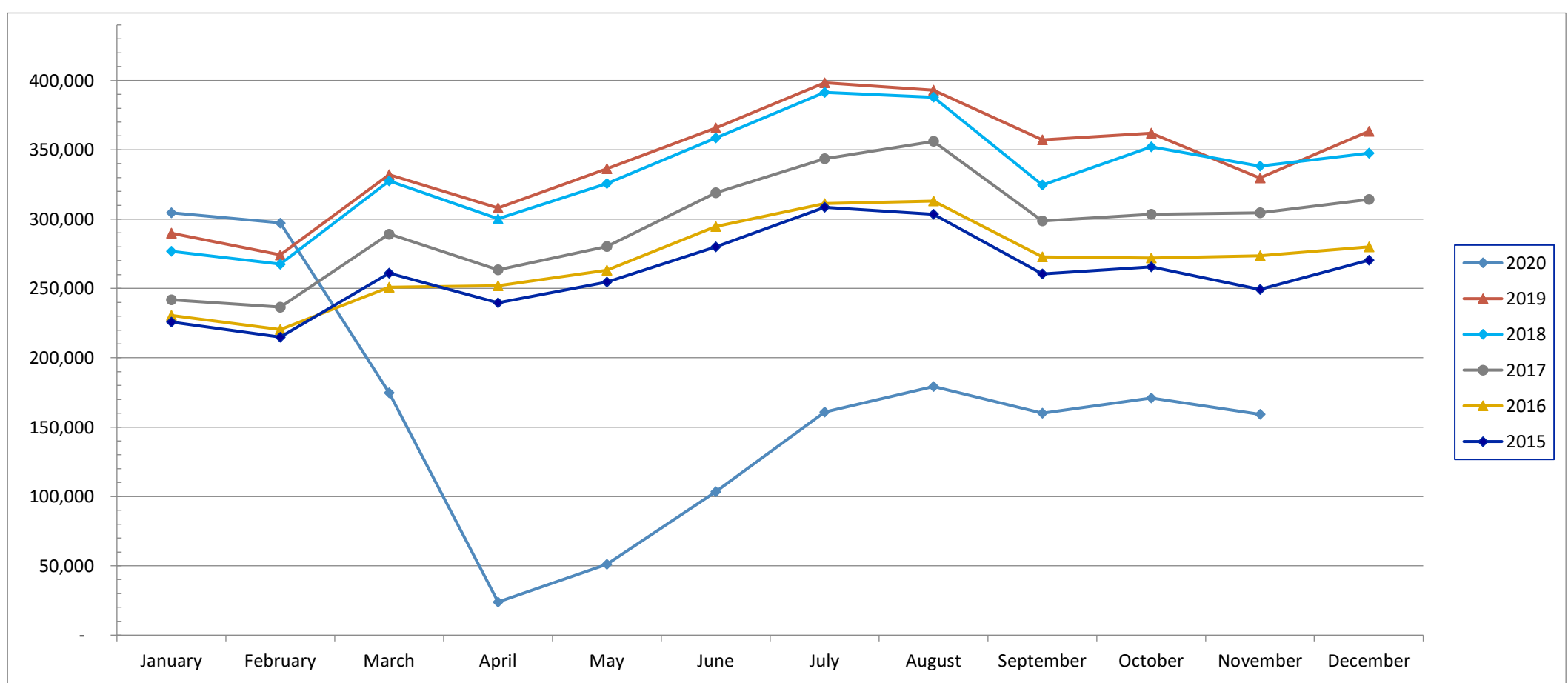
Operations activity is reported by the FEDERAL AVIATION ADMINISTRATION



# SPOKANE INTERNATIONAL AIRPORT MONTHLY TRAFFIC REPORT November-20 TOTAL PASSENGER TRAFFIC COMPARISON

	2020	Percent difference	2019	2018	2017	2016	2015
January	304,561	5.06%	289,904	276,824	241,898	230,576	225,785
February	297,207	8.38%	274,228	267,542	236,534	220,343	214,933
March	174,741	-47.38%	332,082	327,459	289,191	250,881	260,984
April	23,889	-92.24%	308,009	300,371	263,463	251,955	239,603
May	51,032	-84.82%	336,265	325,695	280,274	263,144	254,499
June	103,397	-71.72%	365,625	358,570	318,891	294,561	280,098
July	160,945	-59.59%	398,323	391,420	343,599	311,274	308,500
August	179,225	-54.40%	393,005	387,949	356,008	313,002	303,403
September	159,920	-55.23%	357,241	324,647	298,781	272,675	260,439
October	170,999	-52.77%	362,046	352,028	303,464	272,060	265,563
November	159,315	-51.68%	329,723	338,306	304,566	273,663	249,256
December			363,333	347,461	314,243	279,961	270,279
<b>Total Passengers YTD</b>	<b>1,785,231</b>	<b>-52.35%</b>	<b>3,746,451</b>	<b>3,650,811</b>	<b>3,236,669</b>	<b>2,954,134</b>	<b>2,863,063</b>

## COMPARISON OF TOTAL PASSENGERS





**SPOKANE INTERNATIONAL AIRPORT  
MONTHLY TRAFFIC REPORT  
AIRLINE PASSENGER STATISTICS  
November-20**

	<i>Enplaned</i>				<i>Deplaned</i>			
	2020	2019	Diff	% Change	2020	2019	Diff	% Change
<i>Alaska</i>	26,843	62,767	(35,924)	-57.23%	26,103	62,145	(36,042)	-58.00%
<i>American</i>	11,083	10,294	789	7.66%	9,960	9,724	236	2.43%
<i>Delta</i>	16,225	38,305	(22,080)	-57.64%	15,590	36,243	(20,653)	-56.98%
<i>Frontier</i>	486	3,417	(2,931)	-85.78%	523	3,866	(3,343)	-86.47%
<i>Southwest</i>	17,533	35,209	(17,676)	-50.20%	16,668	34,612	(17,944)	-51.84%
<i>United Airlines</i>	9,460	16,719	(7,259)	-43.42%	8,841	16,071	(7,230)	-44.99%
<i>Charter*</i>	-	177	(177)	-100.00%	-	174	(174)	-100.00%
<b>Grand Total</b>	<b>81,630</b>	<b>166,888</b>	<b>(85,258)</b>	<b>-51.09%</b>	<b>77,685</b>	<b>162,835</b>	<b>(85,150)</b>	<b>-52.29%</b>

Passenger activity reported by individual airlines

Total Passengers for	November, 2020	159,315
Total Passengers for	November, 2019	329,723
% Change Versus	November, 2019	-51.68%