



**SPOKANE INTERNATIONAL AIRPORT
MONTHLY TRAFFIC REPORT
December-20**

	December				YEAR TO DATE			
	2020	2019	Increase (Decrease)	Percent Difference	2020	2019	Increase (Decrease)	Percent Difference
MAJOR AIRLINES:								
Passengers								
Enplaned	84,830	183,868	(99,038)	-53.86%	977,128	2,061,144	(1,084,016)	-52.59%
Deplaned	85,297	182,465	(97,168)	-53.25%	978,230	2,051,640	(1,073,410)	-52.32%
TOTAL PASSENGERS	170,127	366,333	(196,206)	-53.56%	1,955,358	4,112,784	(2,157,426)	-52.46%
CARGO: Enplaned	6,525,155	4,855,728	1,669,427	34.38%	57,885,641	55,078,392	2,807,249	5.10%
Deplaned	10,789,219	8,781,615	2,007,604	22.86%	89,782,981	82,923,713	6,859,268	8.27%
TOTAL CARGO (in Pounds)	17,314,374	13,637,343	3,677,031	26.96%	147,668,622	138,002,105	9,666,517	7.00%

Passenger and Cargo activity reported by individual carriers

MONTHLY AIRCRAFT ACTIVITY

	December				YEAR TO DATE			
	2020	2019	Increase (Decrease)	Percent Difference	2020	2019	Increase (Decrease)	Percent Difference
Major Airlines	3,463	4,126	(663)	-16.07%	35,534	46,457	(10,923)	-23.51%
Regional Airlines	902	871	31	3.56%	9,141	8,603	538	6.25%
General Aviation	343	449	(106)	-23.61%	6,658	7,814	(1,156)	-14.79%
Military	25	55	(30)	-54.55%	1,351	1,332	19	1.43%
Total Itinerant	4,733	5,501	(768)	-13.96%	52,684	64,206	(11,522)	-17.95%
Total Local	192	146	46	31.51%	6,041	4,891	1,150	23.51%
TOTAL OPERATIONS	4,925	5,647	(722)	-12.79%	58,725	69,097	(10,372)	-15.01%

Operations activity is reported by the FEDERAL AVIATION ADMINISTRATION

	2020	2019	Increase (Decrease)	Percent Difference	2020	2019	Increase (Decrease)	Percent Difference
Felts Field Operations Total	3,800	2,704	1,096	40.53%	56,894	60,671	(3,777)	-6.23%

Operations activity is reported by the FEDERAL AVIATION ADMINISTRATION

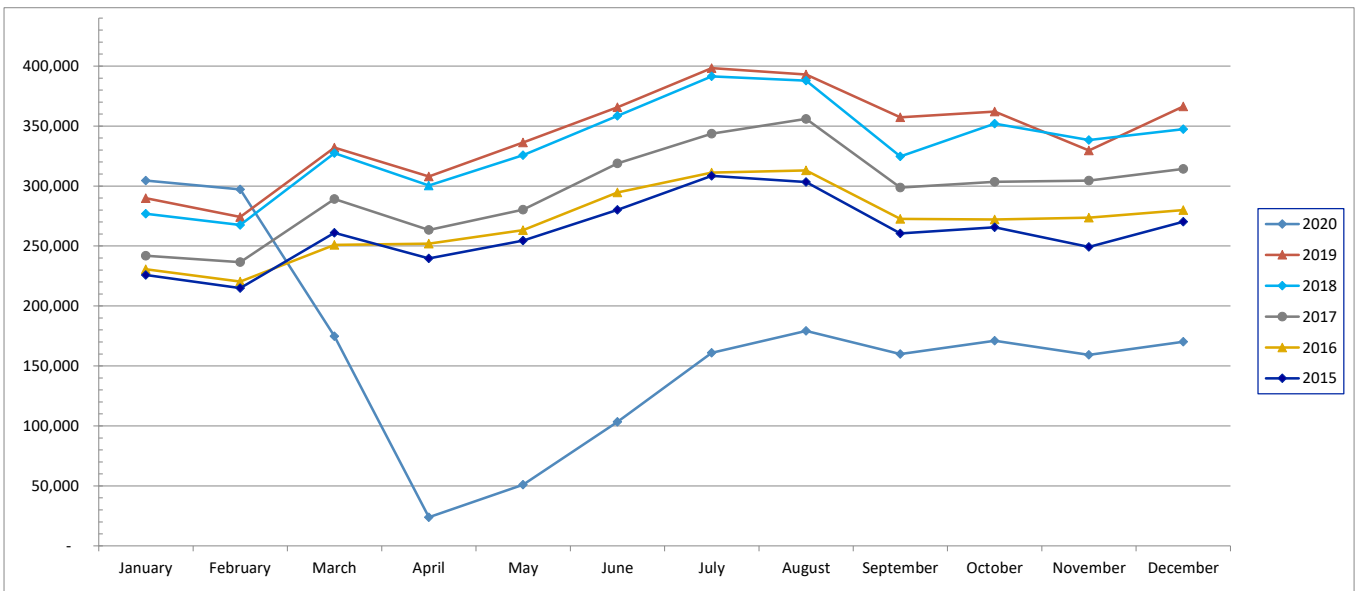


SPOKANE INTERNATIONAL AIRPORT MONTHLY TRAFFIC REPORT December-20

TOTAL PASSENGER TRAFFIC COMPARISON

	2020	Percent difference	2019	2018	2017	2016	2015
January	304,561	5.06%	289,904	276,824	241,898	230,576	225,785
February	297,207	8.38%	274,228	267,542	236,534	220,343	214,933
March	174,741	-47.38%	332,082	327,459	289,191	250,881	260,984
April	23,889	-92.24%	308,009	300,371	263,463	251,955	239,603
May	51,032	-84.82%	336,265	325,695	280,274	263,144	254,499
June	103,397	-71.72%	365,625	358,570	318,891	294,561	280,098
July	160,945	-59.59%	398,323	391,420	343,599	311,274	308,500
August	179,225	-54.40%	393,005	387,949	356,008	313,002	303,403
September	159,920	-55.23%	357,241	324,647	298,781	272,675	260,439
October	170,999	-52.77%	362,046	352,028	303,464	272,060	265,563
November	159,315	-51.68%	329,723	338,306	304,566	273,663	249,256
December	170,127	-53.56%	366,333	347,461	314,243	279,961	270,279
Total Passengers YTD	1,955,358	-52.46%	4,112,784	3,998,272	3,550,912	3,234,095	3,133,342

COMPARISON OF TOTAL PASSENGERS





SPOKANE INTERNATIONAL AIRPORT
MONTHLY TRAFFIC REPORT
AIRLINE PASSENGER STATISTICS
December-20

	<i>Enplaned</i>				<i>Deplaned</i>			
	2020	2019	Diff	% Change	2020	2019	Diff	% Change
<i>Alaska</i>	28,276	69,198	(40,922)	-59.14%	28,741	69,313	(40,572)	-58.53%
<i>American</i>	10,421	11,464	(1,043)	-9.10%	10,295	11,418	(1,123)	-9.84%
<i>Delta</i>	16,156	41,620	(25,464)	-61.18%	15,973	40,608	(24,635)	-60.67%
<i>Frontier</i>	507	3,751	(3,244)	-86.48%	705	3,817	(3,112)	-81.53%
<i>Southwest</i>	20,580	39,589	(19,009)	-48.02%	21,142	38,712	(17,570)	-45.39%
<i>United Airlines</i>	8,470	16,803	(8,333)	-49.59%	8,087	17,162	(9,075)	-52.88%
<i>Charter*</i>	420	1,443	(1,023)	-70.89%	354	1,435	(1,081)	-75.33%
Grand Total	84,830	183,868	(99,038)	-51.09%	85,297	182,465	(97,168)	-52.29%

Passenger activity reported by individual airlines

Total Passengers for	December, 2020	170,127
Total Passengers for	December, 2019	366,333
% Change Versus	December, 2019	-53.56%