



SPOKANE INTERNATIONAL AIRPORT MONTHLY TRAFFIC REPORT December-23

	December				YEAR TO DATE			
	2023	2022	Increase (Decrease)	Percent Difference	2023	2022	Increase (Decrease)	Percent Difference
MAJOR AIRLINES:								
Passengers								
Enplaned	168,517	154,888	13,629	8.80%	2,068,131	1,965,335	102,796	5.23%
Deplaned	166,513	152,907	13,606	8.90%	2,063,135	1,955,637	107,498	5.50%
TOTAL PASSENGERS	335,030	307,795	27,235	8.85%	4,131,266	3,920,972	210,294	5.36%
CARGO:								
Enplaned	7,174,100	8,003,210	(829,110)	-10.36%	69,971,893	68,229,543	1,742,350	2.55%
Deplaned	8,842,501	10,321,999	(1,479,498)	-14.33%	84,844,616	89,560,283	(4,715,667)	-5.27%
TOTAL CARGO (in Pounds)	16,016,601	18,325,209	(2,308,608)	-12.60%	154,816,509	157,789,826	(2,973,317)	-1.88%

Passenger and Cargo activity reported by individual carriers

MONTHLY AIRCRAFT ACTIVITY

	December				YEAR TO DATE			
	2023	2022	Increase (Decrease)	Percent Difference	2023	2022	Increase (Decrease)	Percent Difference
Major Airlines	3,785	3,509	276	7.87%	45,658	43,877	1,781	4.06%
Regional Airlines	719	690	29	4.20%	9,015	8,943	72	0.81%
General Aviation	459	313	146	46.65%	7,591	8,373	(782)	-9.34%
Military	72	19	53	278.95%	1,137	1,096	41	3.74%
<i>Total Itinerant</i>	5,035	4,531	504	11.12%	63,401	62,289	1,112	1.79%
<i>Total Local</i>	295	70	225	321.43%	3,822	4,431	(609)	-13.74%
TOTAL OPERATIONS	5,330	4,601	729	15.84%	67,223	66,720	503	0.75%

Operations activity is reported by the FEDERAL AVIATION ADMINISTRATION

	2023	2022	Increase (Decrease)	Percent Difference	2023	2022	Increase (Decrease)	Percent Difference
Felts Field Operations Total	3,237	2,131	1,106	51.90%	70,218	69,796	422	0.60%

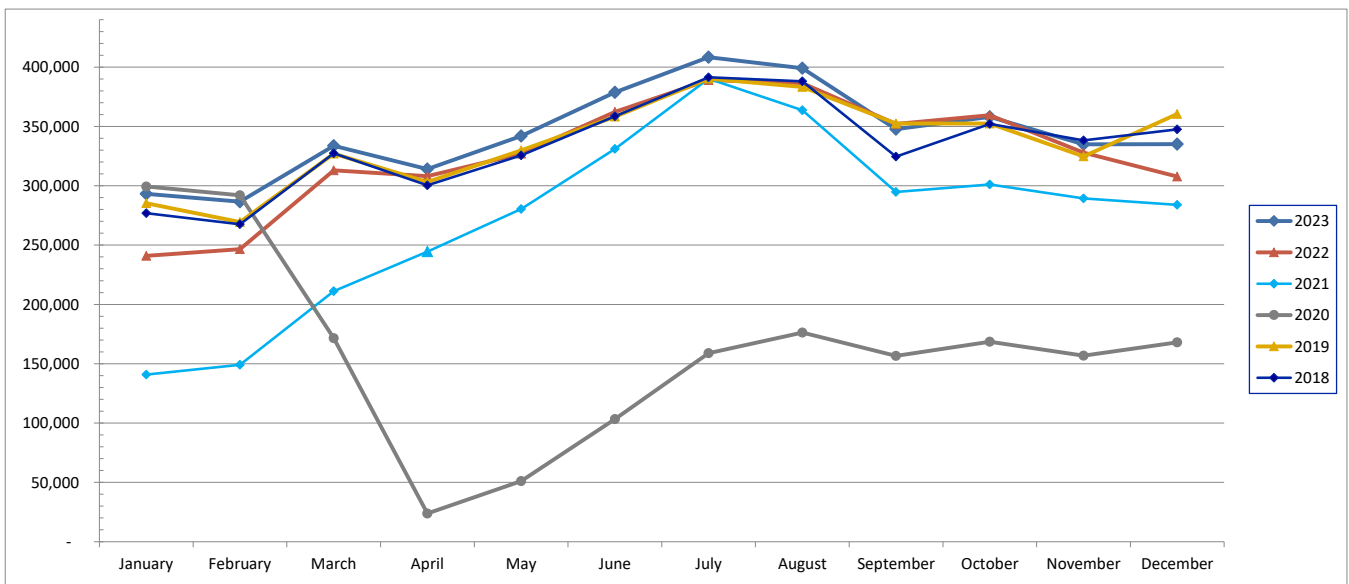
Operations activity is reported by the FEDERAL AVIATION ADMINISTRATION



SPOKANE INTERNATIONAL AIRPORT MONTHLY TRAFFIC REPORT December-23 TOTAL PASSENGER TRAFFIC COMPARISON

	2023	Percent difference	2022	2021	2020	2019	2018
January	293,205	21.70%	240,929	140,868	299,408	285,376	276,824
February	286,612	16.21%	246,640	149,081	291,899	269,411	267,542
March	333,646	6.58%	313,053	211,122	171,517	327,030	327,459
April	313,981	1.89%	308,166	244,497	23,843	303,142	300,371
May	341,904	4.57%	326,954	280,460	51,032	329,879	325,695
June	378,760	4.53%	362,334	331,007	103,397	358,295	358,570
July	408,343	4.95%	389,101	390,211	158,889	390,254	391,420
August	399,037	3.26%	386,451	363,653	176,267	383,350	387,949
September	347,765	-1.23%	352,086	294,710	156,700	352,494	324,647
October	358,007	-0.43%	359,540	301,085	168,491	352,436	352,028
November	334,976	2.15%	327,923	289,392	156,760	324,713	338,306
December	335,030	8.85%	307,795	283,976	167,956	360,540	347,461
Total Passengers YTD	4,131,266	5.36%	3,920,972	3,280,062	1,926,159	4,036,920	3,998,272

COMPARISON OF TOTAL PASSENGERS





SPOKANE INTERNATIONAL AIRPORT
MONTHLY TRAFFIC REPORT
AIRLINE PASSENGER STATISTICS
December-23

	Enplaned				Deplaned			
	2023	2022	Diff	% Change	2023	2022	Diff	% Change
<i>aha!</i>	0	0	0	-100.00%	0	0	0	-100.00%
<i>Alaska</i>	52,443	52,325	118	0.23%	49,528	50,781	(1,253)	-2.47%
<i>Allegiant</i>	2,652	3,145	(493)	-15.68%	2,588	3,197	(609)	-19.05%
<i>American</i>	15,296	9,264	6,032	65.11%	15,928	9,081	6,847	75.40%
<i>Delta</i>	43,725	42,570	1,155	2.71%	43,199	42,300	899	2.13%
<i>Frontier</i>	0	250	(250)	-100.00%	0	290	(290)	-100.00%
<i>Southwest</i>	40,517	35,076	5,441	15.51%	41,483	35,361	6,122	17.31%
<i>United</i>	13,884	12,258	1,626	13.26%	13,787	11,897	1,890	15.89%
<i>Charter</i>	0	0	0	n/a	0	0	0	n/a
Grand Total	168,517	154,888	13,629	8.80%	166,513	152,907	13,606	8.90%

Passenger activity reported by individual airlines

Total Passengers for	December 2023	335,030
Total Passengers for	December 2022	307,795
% Change Versus	December 2022	8.85%