



SPOKANE INTERNATIONAL AIRPORT MONTHLY TRAFFIC REPORT May-23

	May				YEAR TO DATE			
	2023	2022	Increase (Decrease)	Percent Difference	2023	2022	Increase (Decrease)	Percent Difference
MAJOR AIRLINES:								
Passengers								
Enplaned	167,153	161,127	6,026	3.74%	781,263	716,827	64,436	8.99%
Deplaned	174,751	165,827	8,924	5.38%	788,085	718,915	69,170	9.62%
TOTAL PASSENGERS	341,904	326,954	14,950	4.57%	1,569,348	1,435,742	133,606	9.31%
CARGO:								
Enplaned	5,331,325	5,219,422	111,903	2.14%	29,430,328	28,066,965	1,363,363	4.86%
Deplaned	6,907,491	6,650,234	257,257	3.87%	33,644,044	34,691,147	(1,047,103)	-3.02%
TOTAL CARGO (in Pounds)	12,238,816	11,869,656	369,160	3.11%	63,074,372	62,758,112	316,260	0.50%

Passenger and Cargo activity reported by individual carriers

MONTHLY AIRCRAFT ACTIVITY

	May				YEAR TO DATE			
	2023	2022	Increase (Decrease)	Percent Difference	2023	2022	Increase (Decrease)	Percent Difference
Major Airlines	3,925	3,707	218	5.88%	17,899	16,744	1,155	6.90%
Regional Airlines	726	793	(67)	-8.45%	3,572	3,903	(331)	-8.48%
General Aviation	714	744	(30)	-4.03%	2,704	3,318	(614)	-18.51%
Military	95	106	(11)	-10.38%	457	408	49	12.01%
Total Itinerant	5,460	5,350	110	2.06%	24,632	24,373	259	1.06%
Total Local	383	472	(89)	-18.86%	1,758	1,742	16	0.92%
TOTAL OPERATIONS	5,843	5,822	21	0.36%	26,390	26,115	275	1.05%

Operations activity is reported by the FEDERAL AVIATION ADMINISTRATION

	2023	2022	Increase (Decrease)	Percent Difference	2023	2022	Increase (Decrease)	Percent Difference
Felts Field Operations Total	8,459	7,218	1,241	17.19%	30,420	27,002	3,418	12.66%

Operations activity is reported by the FEDERAL AVIATION ADMINISTRATION



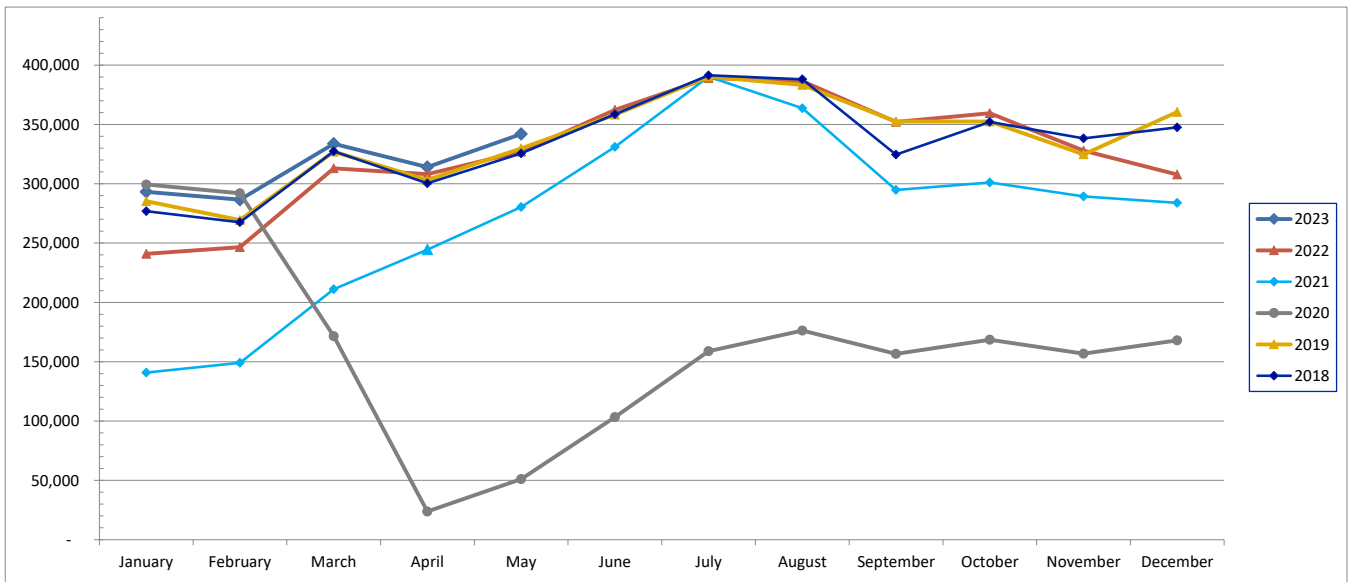
SPOKANE INTERNATIONAL AIRPORT MONTHLY TRAFFIC REPORT

May-23

TOTAL PASSENGER TRAFFIC COMPARISON

	2023	Percent difference	2022	2021	2020	2019	2018
<i>January</i>	293,205	21.70%	240,929	140,868	299,408	285,376	276,824
<i>February</i>	286,612	16.21%	246,640	149,081	291,899	269,411	267,542
<i>March</i>	333,646	6.58%	313,053	211,122	171,517	327,030	327,459
<i>April</i>	313,981	1.89%	308,166	244,497	23,843	303,142	300,371
<i>May</i>	341,904	4.57%	326,954	280,460	51,032	329,879	325,695
<i>June</i>		-100.00%	362,334	331,007	103,397	358,295	358,570
<i>July</i>		-100.00%	389,101	390,211	158,889	390,254	391,420
<i>August</i>		-100.00%	386,451	363,653	176,267	383,350	387,949
<i>September</i>		-100.00%	352,086	294,710	156,700	352,494	324,647
<i>October</i>		-100.00%	359,540	301,085	168,491	352,436	352,028
<i>November</i>		-100.00%	327,923	289,392	156,760	324,713	338,306
<i>December</i>		-100.00%	307,795	283,976	167,956	360,540	347,461
Total Passengers YTD	1,569,348	9.31%	1,435,742	1,026,028	837,699	1,514,838	1,497,891

COMPARISON OF TOTAL PASSENGERS





**SPOKANE INTERNATIONAL AIRPORT
MONTHLY TRAFFIC REPORT
AIRLINE PASSENGER STATISTICS
May-23**

	Enplaned				Deplaned			
	2023	2022	Diff	% Change	2023	2022	Diff	% Change
<i>aha!</i>	0	394	(394)	-100.00%	0	429	(429)	-100.00%
<i>Alaska</i>	57,532	55,426	2,106	3.80%	58,587	55,162	3,425	6.21%
<i>Allegiant</i>	3,906	3,544	362	10.21%	4,107	3,901	206	5.28%
<i>American</i>	9,471	8,040	1,431	17.80%	10,274	8,527	1,747	20.49%
<i>Delta</i>	45,780	43,127	2,653	6.15%	47,690	43,467	4,223	9.72%
<i>Frontier</i>	0	1,090	(1,090)	-100.00%	0	1,425	(1,425)	-100.00%
<i>Southwest</i>	36,959	36,119	840	2.33%	39,344	37,847	1,497	3.96%
<i>United</i>	13,505	13,387	118	0.88%	14,749	15,069	(320)	-2.12%
<i>Charter</i>	0	0	0	n/a	0	0	0	n/a
Grand Total	167,153	161,127	6,026	3.74%	174,751	165,827	8,924	5.38%

Passenger activity reported by individual airlines

Total Passengers for	May 2023	341,904
Total Passengers for	May 2022	326,954
% Change Versus	May 2022	4.57%