



SPOKANE INTERNATIONAL AIRPORT MONTHLY TRAFFIC REPORT August-23

	August				YEAR TO DATE			
	2023	2022	Increase (Decrease)	Percent Difference	2023	2022	Increase (Decrease)	Percent Difference
MAJOR AIRLINES:								
Passengers								
Enplaned	200,593	195,293	5,300	2.71%	1,372,176	1,284,177	87,999	6.85%
Deplaned	198,444	191,158	7,286	3.81%	1,383,312	1,289,451	93,861	7.28%
TOTAL PASSENGERS	399,037	386,451	12,586	3.26%	2,755,488	2,573,628	181,860	7.07%
CARGO:								
Enplaned	5,723,307	5,240,425	482,882	9.21%	46,687,678	43,561,527	3,126,151	7.18%
Deplaned	7,274,515	7,160,144	114,371	1.60%	55,356,565	57,363,814	(2,007,249)	-3.50%
TOTAL CARGO (in Pounds)	12,997,822	12,400,569	597,253	4.82%	102,044,243	100,925,341	1,118,902	1.11%

Passenger and Cargo activity reported by individual carriers

MONTHLY AIRCRAFT ACTIVITY

	August				YEAR TO DATE			
	2023	2022	Increase (Decrease)	Percent Difference	2023	2022	Increase (Decrease)	Percent Difference
Major Airlines	4,232	4,137	95	2.30%	30,207	29,006	1,201	4.14%
Regional Airlines	814	782	32	4.09%	5,879	6,107	(228)	-3.73%
General Aviation	799	916	(117)	-12.77%	5,125	5,782	(657)	-11.36%
Military	130	156	(26)	-16.67%	867	780	87	11.15%
Total Itinerant	5,975	5,991	(16)	-0.27%	42,078	41,675	403	0.97%
Total Local	260	544	(284)	-52.21%	2,872	3,222	(350)	-10.86%
TOTAL OPERATIONS	6,235	6,535	(300)	-4.59%	44,950	44,897	53	0.12%

Operations activity is reported by the FEDERAL AVIATION ADMINISTRATION

	2023	2022	Increase (Decrease)	Percent Difference	2023	2022	Increase (Decrease)	Percent Difference
Felts Field Operations Total	5,919	7,842	(1,923)	-24.52%	50,355	50,228	127	0.25%

Operations activity is reported by the FEDERAL AVIATION ADMINISTRATION



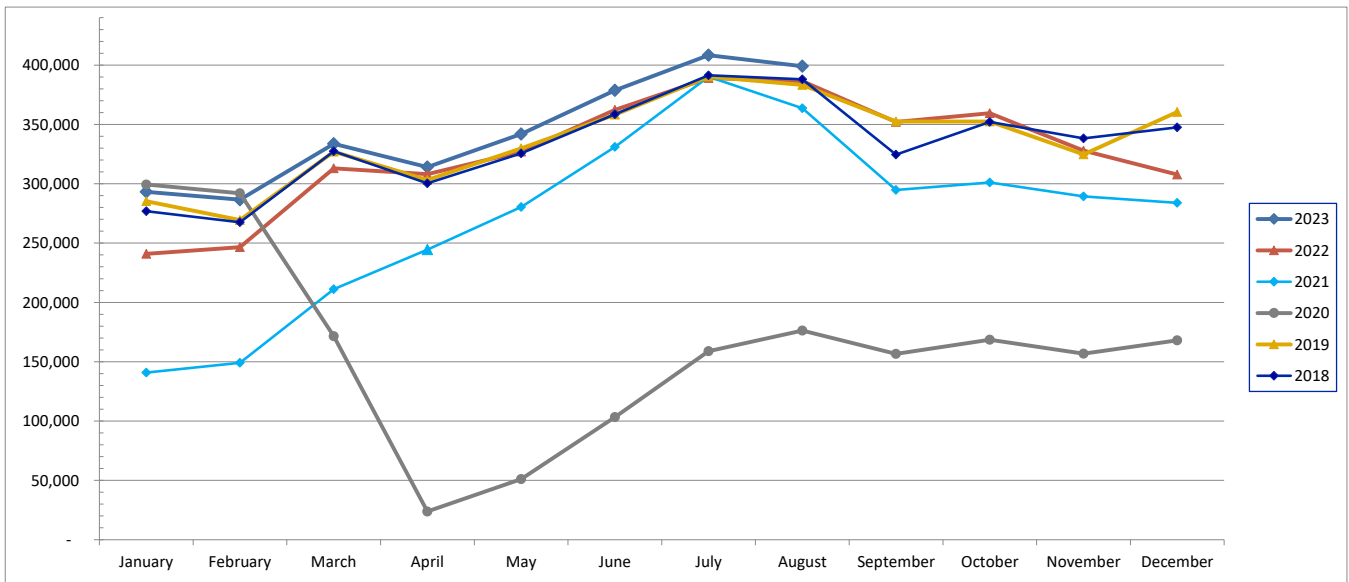
SPOKANE INTERNATIONAL AIRPORT MONTHLY TRAFFIC REPORT

August-23

TOTAL PASSENGER TRAFFIC COMPARISON

	2023	Percent difference	2022	2021	2020	2019	2018
January	293,205	21.70%	240,929	140,868	299,408	285,376	276,824
February	286,612	16.21%	246,640	149,081	291,899	269,411	267,542
March	333,646	6.58%	313,053	211,122	171,517	327,030	327,459
April	313,981	1.89%	308,166	244,497	23,843	303,142	300,371
May	341,904	4.57%	326,954	280,460	51,032	329,879	325,695
June	378,760	4.53%	362,334	331,007	103,397	358,295	358,570
July	408,343	4.95%	389,101	390,211	158,889	390,254	391,420
August	399,037	3.26%	386,451	363,653	176,267	383,350	387,949
September		-100.00%	352,086	294,710	156,700	352,494	324,647
October		-100.00%	359,540	301,085	168,491	352,436	352,028
November		-100.00%	327,923	289,392	156,760	324,713	338,306
December		-100.00%	307,795	283,976	167,956	360,540	347,461
Total Passengers YTD	2,755,488	7.07%	2,573,628	2,110,899	1,276,252	2,646,737	2,635,830

COMPARISON OF TOTAL PASSENGERS





**SPOKANE INTERNATIONAL AIRPORT
MONTHLY TRAFFIC REPORT
AIRLINE PASSENGER STATISTICS
August-23**

	<i>Enplaned</i>				<i>Deplaned</i>			
	2023	2022	Diff	% Change	2023	2022	Diff	% Change
<i>aha!</i>	0	390	(390)	-100.00%	0	397	(397)	-100.00%
<i>Alaska</i>	57,740	60,798	(3,058)	-5.03%	57,662	61,061	(3,399)	-5.57%
<i>Allegiant</i>	3,341	3,909	(568)	-14.53%	3,443	3,870	(427)	-11.03%
<i>American</i>	13,179	8,612	4,567	53.03%	13,024	8,290	4,734	57.10%
<i>Delta</i>	55,612	52,358	3,254	6.21%	54,301	50,945	3,356	6.59%
<i>Frontier</i>	0	1,230	(1,230)	-100.00%	0	1,370	(1,370)	-100.00%
<i>Southwest</i>	46,937	49,496	(2,559)	-5.17%	45,999	47,736	(1,737)	-3.64%
<i>United</i>	22,257	17,275	4,982	28.84%	22,460	16,163	6,297	38.96%
<i>Charter</i>	1,527	1,225	302	n/a	1,555	1,326	229	n/a
Grand Total	200,593	195,293	5,300	2.71%	198,444	191,158	7,286	3.81%

Passenger activity reported by individual airlines

Total Passengers for	August 2023	399,037
Total Passengers for	August 2022	386,451
% Change Versus	August 2022	3.26%