



## SPOKANE INTERNATIONAL AIRPORT MONTHLY TRAFFIC REPORT September-23

	September				YEAR TO DATE			
	2023	2022	Increase (Decrease)	Percent Difference	2023	2022	Increase (Decrease)	Percent Difference
<b>MAJOR AIRLINES:</b>								
Passengers								
Enplaned	177,219	178,415	(1,196)	-0.67%	1,549,395	1,462,592	86,803	5.93%
Deplaned	170,546	173,671	(3,125)	-1.80%	1,553,858	1,463,122	90,736	6.20%
<b>TOTAL PASSENGERS</b>	<b>347,765</b>	<b>352,086</b>	<b>(4,321)</b>	<b>-1.23%</b>	<b>3,103,253</b>	<b>2,925,714</b>	<b>177,539</b>	<b>6.07%</b>
<b>CARGO:</b>								
Enplaned	5,144,127	5,019,090	125,037	2.49%	51,831,805	48,580,617	3,251,188	6.69%
Deplaned	6,748,175	7,149,424	(401,249)	-5.61%	62,104,740	64,513,238	(2,408,498)	-3.73%
<b>TOTAL CARGO (in Pounds)</b>	<b>11,892,302</b>	<b>12,168,514</b>	<b>(276,212)</b>	<b>-2.27%</b>	<b>113,936,545</b>	<b>113,093,855</b>	<b>842,690</b>	<b>0.75%</b>

Passenger and Cargo activity reported by individual carriers

### MONTHLY AIRCRAFT ACTIVITY

	September				YEAR TO DATE			
	2023	2022	Increase (Decrease)	Percent Difference	2023	2022	Increase (Decrease)	Percent Difference
Major Airlines	3,997	4,031	(34)	-0.84%	34,204	33,037	1,167	3.53%
Regional Airlines	765	739	26	3.52%	6,644	6,846	(202)	-2.95%
General Aviation	713	927	(214)	-23.09%	5,838	6,709	(871)	-12.98%
Military	84	97	(13)	-13.40%	951	877	74	8.44%
<i>Total Itinerant</i>	5,559	5,794	(235)	-4.06%	47,637	47,469	168	0.35%
<i>Total Local</i>	274	422	(148)	-35.07%	3,146	3,644	(498)	-13.67%
<b>TOTAL OPERATIONS</b>	<b>5,833</b>	<b>6,216</b>	<b>(383)</b>	<b>-6.16%</b>	<b>50,783</b>	<b>51,113</b>	<b>(330)</b>	<b>-0.65%</b>

Operations activity is reported by the FEDERAL AVIATION ADMINISTRATION

	2023	2022	Increase (Decrease)	Percent Difference	2023	2022	Increase (Decrease)	Percent Difference
Felts Field Operations Total	6,220	7,113	(893)	-12.55%	56,575	57,341	(766)	-1.34%

Operations activity is reported by the FEDERAL AVIATION ADMINISTRATION



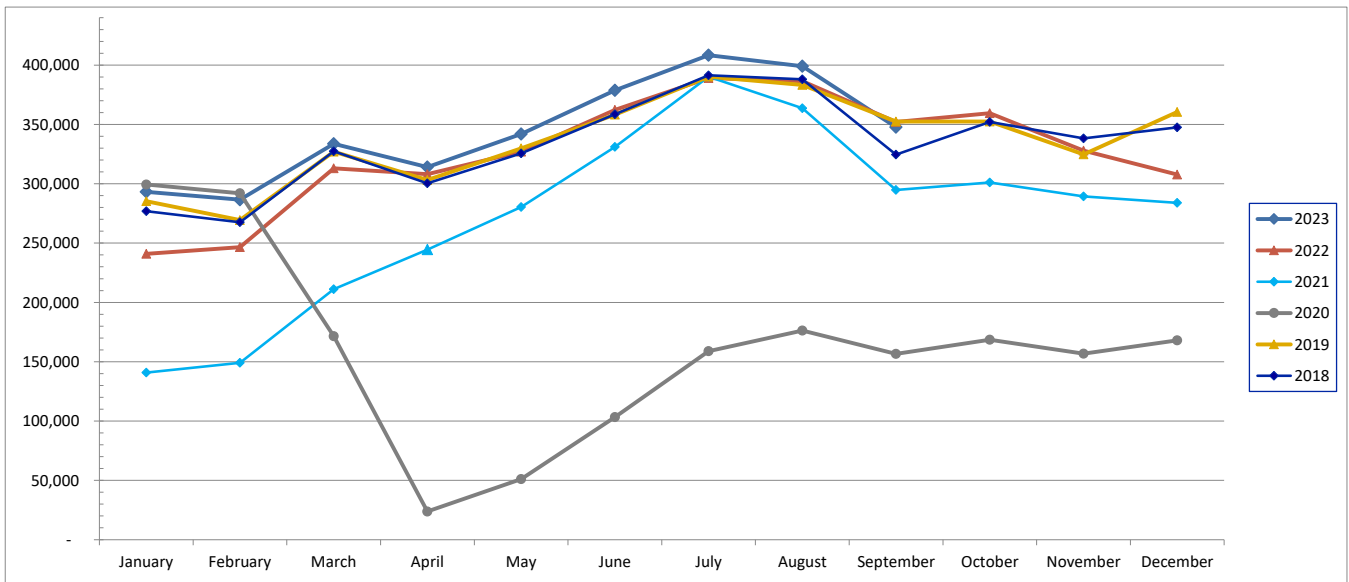
# SPOKANE INTERNATIONAL AIRPORT MONTHLY TRAFFIC REPORT

## September-23

### TOTAL PASSENGER TRAFFIC COMPARISON

	2023	Percent difference	2022	2021	2020	2019	2018
January	293,205	21.70%	240,929	140,868	299,408	285,376	276,824
February	286,612	16.21%	246,640	149,081	291,899	269,411	267,542
March	333,646	6.58%	313,053	211,122	171,517	327,030	327,459
April	313,981	1.89%	308,166	244,497	23,843	303,142	300,371
May	341,904	4.57%	326,954	280,460	51,032	329,879	325,695
June	378,760	4.53%	362,334	331,007	103,397	358,295	358,570
July	408,343	4.95%	389,101	390,211	158,889	390,254	391,420
August	399,037	3.26%	386,451	363,653	176,267	383,350	387,949
September	347,765	-1.23%	352,086	294,710	156,700	352,494	324,647
October		-100.00%	359,540	301,085	168,491	352,436	352,028
November		-100.00%	327,923	289,392	156,760	324,713	338,306
December		-100.00%	307,795	283,976	167,956	360,540	347,461
<b>Total Passengers YTD</b>	<b>3,103,253</b>	<b>6.07%</b>	<b>2,925,714</b>	<b>2,405,609</b>	<b>1,432,952</b>	<b>2,999,231</b>	<b>2,960,477</b>

### COMPARISON OF TOTAL PASSENGERS





**SPOKANE INTERNATIONAL AIRPORT**  
**MONTHLY TRAFFIC REPORT**  
**AIRLINE PASSENGER STATISTICS**  
**September-23**

	Enplaned				Deplaned			
	2023	2022	Diff	% Change	2023	2022	Diff	% Change
<i>aha!</i>	0	0	0	-100.00%	0	0	0	-100.00%
<i>Alaska</i>	58,401	53,326	5,075	9.52%	56,614	52,747	3,867	7.33%
<i>Allegiant</i>	2,035	4,484	(2,449)	-54.62%	2,057	4,231	(2,174)	-51.38%
<i>American</i>	11,989	11,356	633	5.57%	11,675	11,230	445	3.96%
<i>Delta</i>	47,698	48,092	(394)	-0.82%	44,533	46,995	(2,462)	-5.24%
<i>Frontier</i>	0	1,241	(1,241)	-100.00%	0	1,069	(1,069)	-100.00%
<i>Southwest</i>	40,608	42,575	(1,967)	-4.62%	39,209	41,139	(1,930)	-4.69%
<i>United</i>	16,313	16,139	174	1.08%	16,281	14,855	1,426	9.60%
<i>Charter</i>	175	1,202	(1,027)	n/a	177	1,405	(1,228)	n/a
<b>Grand Total</b>	<b>177,219</b>	<b>178,415</b>	<b>(1,196)</b>	<b>-0.67%</b>	<b>170,546</b>	<b>173,671</b>	<b>(3,125)</b>	<b>-1.80%</b>

Passenger activity reported by individual airlines

Total Passengers for	September 2023	347,765
Total Passengers for	September 2022	352,086
% Change Versus	September 2022	-1.23%