



SPOKANE INTERNATIONAL AIRPORT MONTHLY TRAFFIC REPORT July-23

| | July | | | | YEAR TO DATE | | | |
|--------------------------------|-------------------|-------------------|---------------------|--------------------|-------------------|-------------------|---------------------|--------------------|
| | 2023 | 2022 | Increase (Decrease) | Percent Difference | 2023 | 2022 | Increase (Decrease) | Percent Difference |
| MAJOR AIRLINES: | | | | | | | | |
| Passengers | | | | | | | | |
| Enplaned | 203,977 | 194,250 | 9,727 | 5.01% | 1,171,583 | 1,088,884 | 82,699 | 7.59% |
| Deplaned | 204,366 | 194,851 | 9,515 | 4.88% | 1,184,868 | 1,098,293 | 86,575 | 7.88% |
| TOTAL PASSENGERS | 408,343 | 389,101 | 19,242 | 4.95% | 2,356,451 | 2,187,177 | 169,274 | 7.74% |
| CARGO: | | | | | | | | |
| Enplaned | 5,743,000 | 4,997,673 | 745,327 | 14.91% | 40,964,371 | 38,321,102 | 2,643,269 | 6.90% |
| Deplaned | 6,655,482 | 7,415,371 | (759,889) | -10.25% | 48,082,050 | 50,203,670 | (2,121,620) | -4.23% |
| TOTAL CARGO (in Pounds) | 12,398,482 | 12,413,044 | (14,562) | -0.12% | 89,046,421 | 88,524,772 | 521,649 | 0.59% |

Passenger and Cargo activity reported by individual carriers

MONTHLY AIRCRAFT ACTIVITY

| | July | | | | YEAR TO DATE | | | |
|-------------------------|--------------|--------------|---------------------|--------------------|---------------|---------------|---------------------|--------------------|
| | 2023 | 2022 | Increase (Decrease) | Percent Difference | 2023 | 2022 | Increase (Decrease) | Percent Difference |
| Major Airlines | 4,089 | 4,095 | (6) | -0.15% | 25,975 | 24,869 | 1,106 | 4.45% |
| Regional Airlines | 725 | 676 | 49 | 7.25% | 5,065 | 5,325 | (260) | -4.88% |
| General Aviation | 822 | 843 | (21) | -2.49% | 4,326 | 4,866 | (540) | -11.10% |
| Military | 141 | 122 | 19 | 15.57% | 737 | 624 | 113 | 18.11% |
| Total Itinerant | 5,777 | 5,736 | 41 | 0.71% | 36,103 | 35,684 | 419 | 1.17% |
| Total Local | 339 | 588 | (249) | -42.35% | 2,612 | 2,678 | (66) | -2.46% |
| TOTAL OPERATIONS | 6,116 | 6,324 | (208) | -3.29% | 38,715 | 38,362 | 353 | 0.92% |

Operations activity is reported by the FEDERAL AVIATION ADMINISTRATION

| | 2023 | 2022 | Increase (Decrease) | Percent Difference | 2023 | 2022 | Increase (Decrease) | Percent Difference |
|------------------------------|-------|-------|---------------------|--------------------|--------|--------|---------------------|--------------------|
| Felts Field Operations Total | 6,525 | 6,877 | (352) | -5.12% | 44,436 | 42,386 | 2,050 | 4.84% |

Operations activity is reported by the FEDERAL AVIATION ADMINISTRATION

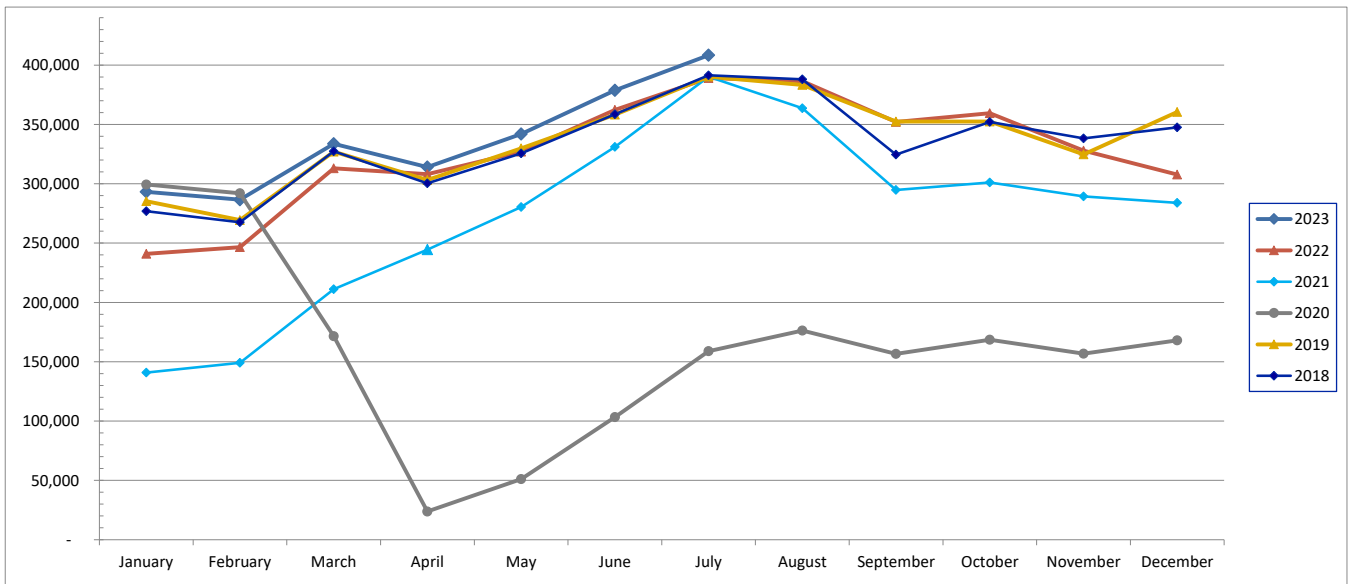


SPOKANE INTERNATIONAL AIRPORT MONTHLY TRAFFIC REPORT July-23

TOTAL PASSENGER TRAFFIC COMPARISON

| | 2023 | Percent difference | 2022 | 2021 | 2020 | 2019 | 2018 |
|-----------------------------|------------------|--------------------|------------------|------------------|------------------|------------------|------------------|
| January | 293,205 | 21.70% | 240,929 | 140,868 | 299,408 | 285,376 | 276,824 |
| February | 286,612 | 16.21% | 246,640 | 149,081 | 291,899 | 269,411 | 267,542 |
| March | 333,646 | 6.58% | 313,053 | 211,122 | 171,517 | 327,030 | 327,459 |
| April | 313,981 | 1.89% | 308,166 | 244,497 | 23,843 | 303,142 | 300,371 |
| May | 341,904 | 4.57% | 326,954 | 280,460 | 51,032 | 329,879 | 325,695 |
| June | 378,760 | 4.53% | 362,334 | 331,007 | 103,397 | 358,295 | 358,570 |
| July | 408,343 | 4.95% | 389,101 | 390,211 | 158,889 | 390,254 | 391,420 |
| August | | -100.00% | 386,451 | 363,653 | 176,267 | 383,350 | 387,949 |
| September | | -100.00% | 352,086 | 294,710 | 156,700 | 352,494 | 324,647 |
| October | | -100.00% | 359,540 | 301,085 | 168,491 | 352,436 | 352,028 |
| November | | -100.00% | 327,923 | 289,392 | 156,760 | 324,713 | 338,306 |
| December | | -100.00% | 307,795 | 283,976 | 167,956 | 360,540 | 347,461 |
| Total Passengers YTD | 2,356,451 | 7.74% | 2,187,177 | 1,747,246 | 1,099,985 | 2,263,387 | 2,247,881 |

COMPARISON OF TOTAL PASSENGERS





**SPOKANE INTERNATIONAL AIRPORT
MONTHLY TRAFFIC REPORT
AIRLINE PASSENGER STATISTICS
July-23**

| | <i>Enplaned</i> | | | | <i>Deplaned</i> | | | |
|--------------------|-----------------|----------------|--------------|--------------|-----------------|----------------|--------------|--------------|
| | 2023 | 2022 | Diff | % Change | 2023 | 2022 | Diff | % Change |
| <i>aha!</i> | 0 | 539 | (539) | -100.00% | 0 | 527 | (527) | -100.00% |
| <i>Alaska</i> | 56,074 | 60,913 | (4,839) | -7.94% | 56,528 | 60,736 | (4,208) | -6.93% |
| <i>Allegiant</i> | 4,511 | 4,349 | 162 | 3.72% | 4,525 | 4,562 | (37) | -0.81% |
| <i>American</i> | 14,289 | 8,458 | 5,831 | 68.94% | 14,336 | 8,879 | 5,457 | 61.46% |
| <i>Delta</i> | 56,296 | 52,158 | 4,138 | 7.93% | 55,280 | 51,769 | 3,511 | 6.78% |
| <i>Frontier</i> | 0 | 1,071 | (1,071) | -100.00% | 0 | 847 | (847) | -100.00% |
| <i>Southwest</i> | 50,709 | 48,660 | 2,049 | 4.21% | 50,884 | 49,208 | 1,676 | 3.41% |
| <i>United</i> | 20,662 | 17,033 | 3,629 | 21.31% | 21,293 | 17,136 | 4,157 | 24.26% |
| <i>Charter</i> | 1,436 | 1,069 | 367 | n/a | 1,520 | 1,187 | 333 | n/a |
| Grand Total | 203,977 | 194,250 | 9,727 | 5.01% | 204,366 | 194,851 | 9,515 | 4.88% |

Passenger activity reported by individual airlines

| | | |
|----------------------|-----------|---------|
| Total Passengers for | July 2023 | 408,343 |
| Total Passengers for | July 2022 | 389,101 |
| % Change Versus | July 2022 | 4.95% |