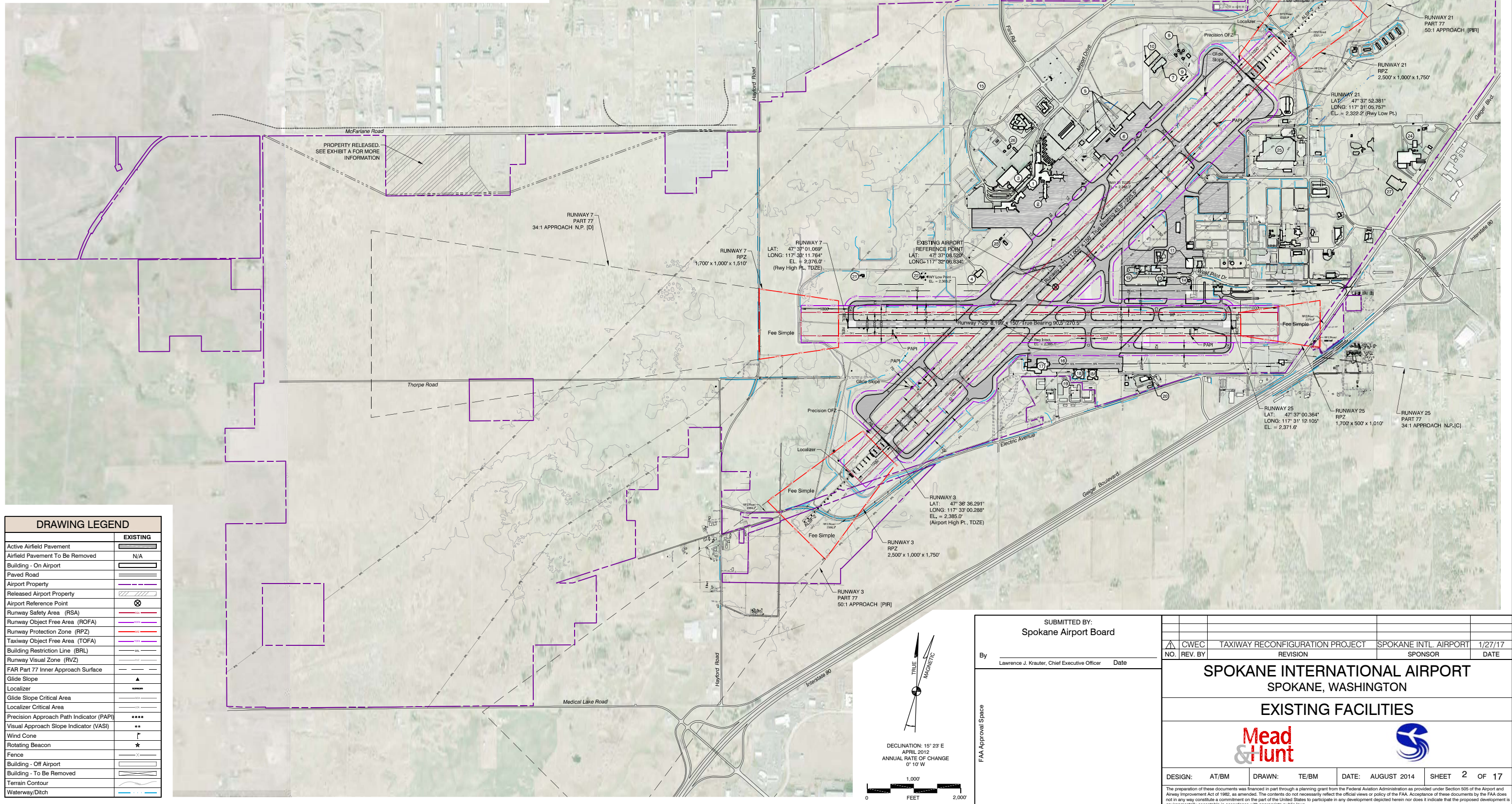


EXISTING FACILITY LEGEND	
1 Terminal	15 Cellphone Waiting Parking Lot
2 Air Carrier Apron	16 South Maintenance Apron
3 Terminal Parking Garage	17 Aeronautical / Maintenance Hangar
4 Airport Rescue and Fire Fighting	18 Aeronautical / Maintenance Hangar
5 Air Cargo	19 Aeronautical / Maintenance Hangar
6 West Cargo Apron	20 Army National Guard
7 Operations Building	21 Air Traffic Control Tower
8 Fuel Farm	22 FAA ASR-9 Radar
9 Glycol Storage	23 RTR Antenna Farm
10 Snow Removal Equipment Building	24 Regulator Building
11 Aeronautical / Maintenance Hangar	25 Spokane Waste to Energy
12 FBO	26 USPS Regional Distribution Center
13 Aeronautical / Maintenance Hangar	27 Parking Operations Building and Garage
14 US Customs	28 MRF

Only major facilities listed here. For all facilities and elevations, see building area plans, Sheets 13-15.

AIRPORT DATA			
	EXISTING	FUTURE	ULTIMATE
AIRPORT ELEVATION (Above Mean Sea Level)	2,385.3' (d)	No Change	2,405' (est.)
AIRPORT REFERENCE POINT	LATITUDE	47° 37' 08.520" N	No Change
	LONGITUDE	117° 32' 06.834" W	No Change
MEAN MAX. TEMP. (Hottest Month)	84.0° F (July)	No Change	No Change
AIRPORT REFERENCE CODE	D-IV	No Change	D-V
CRITICAL AIRCRAFT	Boeing 767-300	No Change	Boeing 777
AIRPORT AND TERMINAL NAVIGATIONAL AIDS	Beacon, ILS, Radar	No Change	No Change
GPS APPROACH ESTABLISHED	Yes	No Change	No Change
AIRPORT ACREAGE	Fee Simple	6,140 acres	5,118 acres
	Avigation Easement	N/A	No Change

• For Notations, See Data Sheet



DRAWING LEGEND	
	EXISTING
Active Airfield Pavement	[Symbol]
Airfield Pavement To Be Removed	N/A
Building - On Airport	[Symbol]
Paved Road	[Symbol]
Airport Property	[Symbol]
Released Airport Property	[Symbol]
Airport Reference Point	[Symbol]
Runway Safety Area (RSA)	[Symbol]
Runway Object Free Area (ROFA)	[Symbol]
Runway Protection Zone (RPZ)	[Symbol]
Taxiway Object Free Area (TOFA)	[Symbol]
Building Restriction Line (BRL)	[Symbol]
Runway Visual Zone (RVZ)	[Symbol]
FAR Part 77 Inner Approach Surface	[Symbol]
Glide Slope	[Symbol]
Localizer	[Symbol]
Glide Slope Critical Area	[Symbol]
Localizer Critical Area	[Symbol]
Precision Approach Path Indicator (PAPI)	[Symbol]
Visual Approach Slope Indicator (VASI)	[Symbol]
Wind Cone	[Symbol]
Rotating Beacon	[Symbol]
Fence	[Symbol]
Building - Off Airport	[Symbol]
Building - To Be Removed	[Symbol]
Terrain Contour	[Symbol]
Waterway/Ditch	[Symbol]

SUBMITTED BY:
Spokane Airport Board

By Lawrence J. Krauter, Chief Executive Officer Date _____

FAA Approval Space

NO.	REV. BY	REVISION	SPONSOR	DATE
1	CWEC	TAXIWAY RECONFIGURATION PROJECT	SPOKANE INTL. AIRPORT	1/27/17

SPOKANE INTERNATIONAL AIRPORT
SPOKANE, WASHINGTON

EXISTING FACILITIES

Mead & Hunt

DESIGN: AT/BM DRAWN: TE/BM DATE: AUGUST 2014 SHEET 2 OF 17

The preparation of these documents was financed in part through a planning grant from the Federal Aviation Administration as provided under Section 505 of the Airport and Airway Improvement Act of 1982, as amended. The contents do not necessarily reflect the official views or policy of the FAA. Acceptance of these documents by the FAA does not in any way constitute a commitment on the part of the United States to participate in any development depicted herein nor does it indicate that the proposed development is environmentally acceptable in accordance with appropriate public laws.

