



SPOKANE INTERNATIONAL AIRPORT
MONTHLY TRAFFIC REPORT
November-19

	November				YEAR TO DATE			
	2019	2018	Increase (Decrease)	Percent Difference	2019	2018	Increase (Decrease)	Percent Difference
MAJOR AIRLINES:								
Passengers								
Enplaned	166,888	169,680	(2,792)	-1.65%	1,877,276	1,824,052	53,224	2.92%
Deplaned	162,835	168,626	(5,791)	-3.43%	1,869,175	1,826,759	42,416	2.32%
TOTAL PASSENGERS	329,723	338,306	(8,583)	-2.54%	3,746,451	3,650,811	95,640	2.62%
CARGO: Enplaned	4,029,520	4,829,357	(799,837)	-16.56%	50,222,664	54,441,905	(4,219,241)	-7.75%
Deplaned	7,097,362	6,823,031	274,331	4.02%	74,142,099	74,291,612	(149,513)	-0.20%
TOTAL CARGO (in Pounds)	11,126,882	11,652,388	(525,506)	-4.51%	124,364,763	128,733,517	(4,368,754)	-3.39%

Passenger activity reported by individual airlines

MONTHLY AIRCRAFT ACTIVITY

	November				YEAR TO DATE			
	2019	2018	Increase (Decrease)	Percent Difference	2019	2018	Increase (Decrease)	Percent Difference
Major Airlines	3,882	3,877	5	0.13%	42,331	42,079	252	0.60%
Regional Airlines	824	603	221	36.65%	7,732	6,664	1,068	16.03%
General Aviation	565	534	31	5.81%	7,365	7,512	(147)	-1.96%
Military	170	48	122	254.17%	1,277	1,242	35	2.82%
Total Itinerant	5,441	5,062	379	7.49%	58,705	57,497	1,208	2.10%
Total Local	527	227	300	132.16%	4,745	5,372	(627)	-11.67%
TOTAL OPERATIONS	5,968	5,289	679	12.84%	63,450	62,869	581	0.92%

Operations activity is reported by the FEDERAL AVIATION ADMINISTRATION

	2019	2018	Increase (Decrease)	Percent Difference	2019	2018	Increase (Decrease)	Percent Difference
Felts Field Operations Total	4,557	3,822	735	19.23%	57,967	56,057	1,910	3.41%

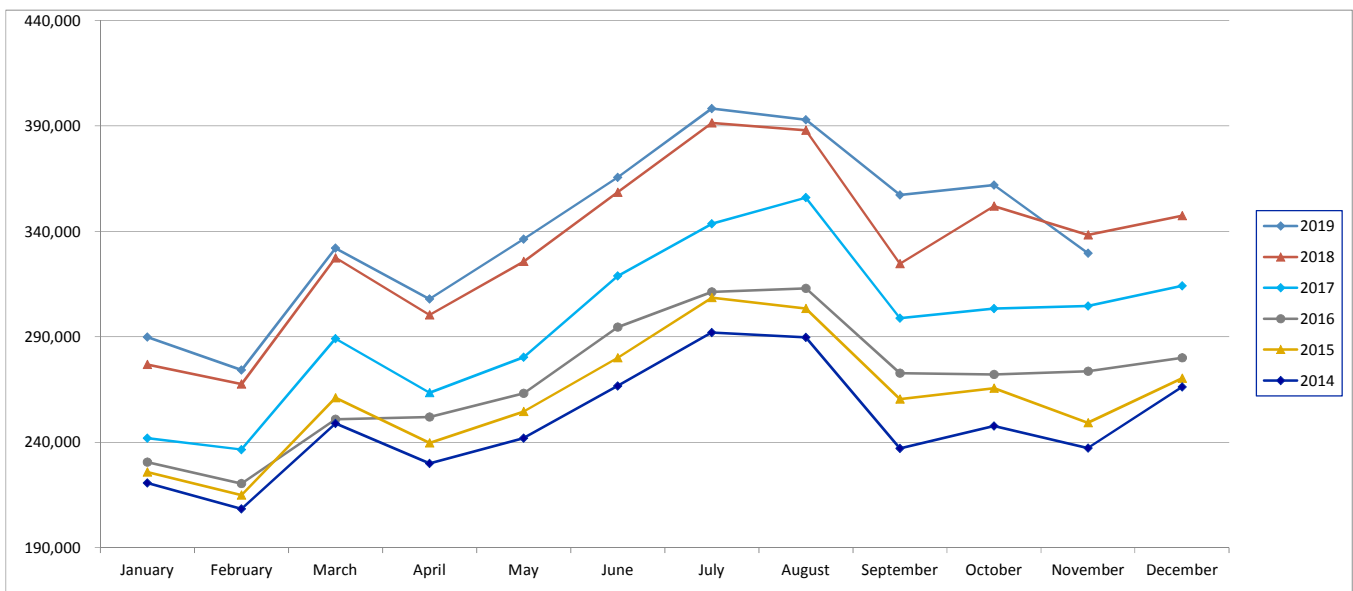
Operations activity is reported by the FEDERAL AVIATION ADMINISTRATION



SPOKANE INTERNATIONAL AIRPORT
MONTHLY TRAFFIC REPORT
November-19
TOTAL PASSENGER TRAFFIC COMPARISON

	2019	Percent difference	2018	2017	2016	2015	2014
January	289,904	4.73%	276,824	241,898	230,576	225,785	220,737
February	274,228	2.50%	267,542	236,534	220,343	214,933	208,435
March	332,082	1.41%	327,459	289,191	250,881	260,984	248,904
April	308,009	2.54%	300,371	263,463	251,955	239,603	229,989
May	336,265	3.25%	325,695	280,274	263,144	254,499	241,870
June	365,625	1.97%	358,570	318,891	294,561	280,098	266,701
July	398,323	1.76%	391,420	343,599	311,274	308,500	292,025
August	393,005	1.30%	387,949	356,008	313,002	303,403	289,713
September	357,241	10.04%	324,647	298,781	272,675	260,439	237,078
October	362,046	2.85%	352,028	303,464	272,060	265,563	247,679
November	329,723	-2.54%	338,306	304,566	273,663	249,256	237,296
December			347,461	314,243	279,961	270,279	266,225
Total Passengers YTD	3,746,451	2.62%	3,650,811	3,236,669	2,954,134	2,863,063	2,720,427

COMPARISON OF TOTAL PASSENGERS





SPOKANE INTERNATIONAL AIRPORT
MONTHLY TRAFFIC REPORT
AIRLINE PASSENGER STATISTICS
November-19

	<i>Enplaned</i>				<i>Deplaned</i>			
	2019	2018	Diff	% Change	2019	2018	Diff	% Change
<i>Alaska</i>	62,767	55,765	7,002	12.56%	62,145	56,136	6,009	10.70%
<i>American</i>	10,294	11,981	(1,687)	-14.08%	9,724	11,165	(1,441)	-12.91%
<i>Delta</i>	38,305	36,855	1,450	3.93%	36,243	36,089	154	0.43%
<i>Frontier</i>	3,417	3,123	294	9.41%	3,866	3,089	777	25.15%
<i>Southwest</i>	35,209	40,396	(5,187)	-12.84%	34,612	39,800	(5,188)	-13.04%
<i>United Airlines</i>	16,719	21,284	(4,565)	-21.45%	16,071	22,071	(6,000)	-27.18%
<i>Charter</i>	177	276	(99)	-35.87%	174	276	(102)	-36.96%
Grand Total	166,888	169,680	(2,792)	-1.65%	162,835	168,626	(5,791)	-3.43%

Passenger activity reported by individual airlines

Total Passengers for	November, 2019	329,723
Total Passengers for	November, 2018	338,306
% Change Versus	November, 2018	-2.54%