



SPOKANE INTERNATIONAL AIRPORT
MONTHLY TRAFFIC REPORT
December-19

| | December | | | | YEAR TO DATE | | | |
|--------------------------------|-------------------|-------------------|---------------------|--------------------|--------------------|--------------------|---------------------|--------------------|
| | 2019 | 2018 | Increase (Decrease) | Percent Difference | 2019 | 2018 | Increase (Decrease) | Percent Difference |
| MAJOR AIRLINES: | | | | | | | | |
| Passengers | | | | | | | | |
| Enplaned | 183,868 | 174,897 | 8,971 | 5.13% | 2,061,144 | 1,998,949 | 62,195 | 3.11% |
| Deplaned | 182,465 | 172,564 | 9,901 | 5.74% | 2,051,640 | 1,999,323 | 52,317 | 2.62% |
| TOTAL PASSENGERS | 366,333 | 347,461 | 18,872 | 5.43% | 4,112,784 | 3,998,272 | 114,512 | 2.86% |
| CARGO: Enplaned | 4,855,728 | 4,753,176 | 102,552 | 2.16% | 55,078,392 | 59,195,081 | (4,116,689) | -6.95% |
| Deplaned | 8,781,615 | 8,127,315 | 654,300 | 8.05% | 82,923,714 | 82,418,927 | 504,787 | 0.61% |
| TOTAL CARGO (in Pounds) | 13,637,343 | 12,880,491 | 756,852 | 5.88% | 138,002,106 | 141,614,008 | (3,611,902) | -2.55% |

Passenger activity reported by individual airlines

MONTHLY AIRCRAFT ACTIVITY

| | December | | | | YEAR TO DATE | | | |
|-------------------------|--------------|--------------|---------------------|--------------------|---------------|---------------|---------------------|--------------------|
| | 2019 | 2018 | Increase (Decrease) | Percent Difference | 2019 | 2018 | Increase (Decrease) | Percent Difference |
| Major Airlines | 4,126 | 4,055 | 71 | 1.75% | 46,457 | 46,134 | 323 | 0.70% |
| Regional Airlines | 871 | 759 | 112 | 14.76% | 8,603 | 7,423 | 1,180 | 15.90% |
| General Aviation | 449 | 394 | 55 | 13.96% | 7,814 | 7,906 | (92) | -1.16% |
| Military | 55 | 33 | 22 | 66.67% | 1,332 | 1,275 | 57 | 4.47% |
| Total Itinerant | 5,501 | 5,241 | 260 | 4.96% | 64,206 | 62,738 | 1,468 | 2.34% |
| Total Local | 146 | 146 | - | 0.00% | 4,891 | 5,518 | (627) | -11.36% |
| TOTAL OPERATIONS | 5,647 | 5,387 | 260 | 4.83% | 69,097 | 68,256 | 841 | 1.23% |

Operations activity is reported by the FEDERAL AVIATION ADMINISTRATION

| | 2019 | 2018 | Increase (Decrease) | Percent Difference | 2019 | 2018 | Increase (Decrease) | Percent Difference |
|------------------------------|-------|-------|---------------------|--------------------|--------|--------|---------------------|--------------------|
| Felts Field Operations Total | 2,704 | 3,179 | (475) | -14.94% | 60,671 | 59,236 | 1,435 | 2.42% |

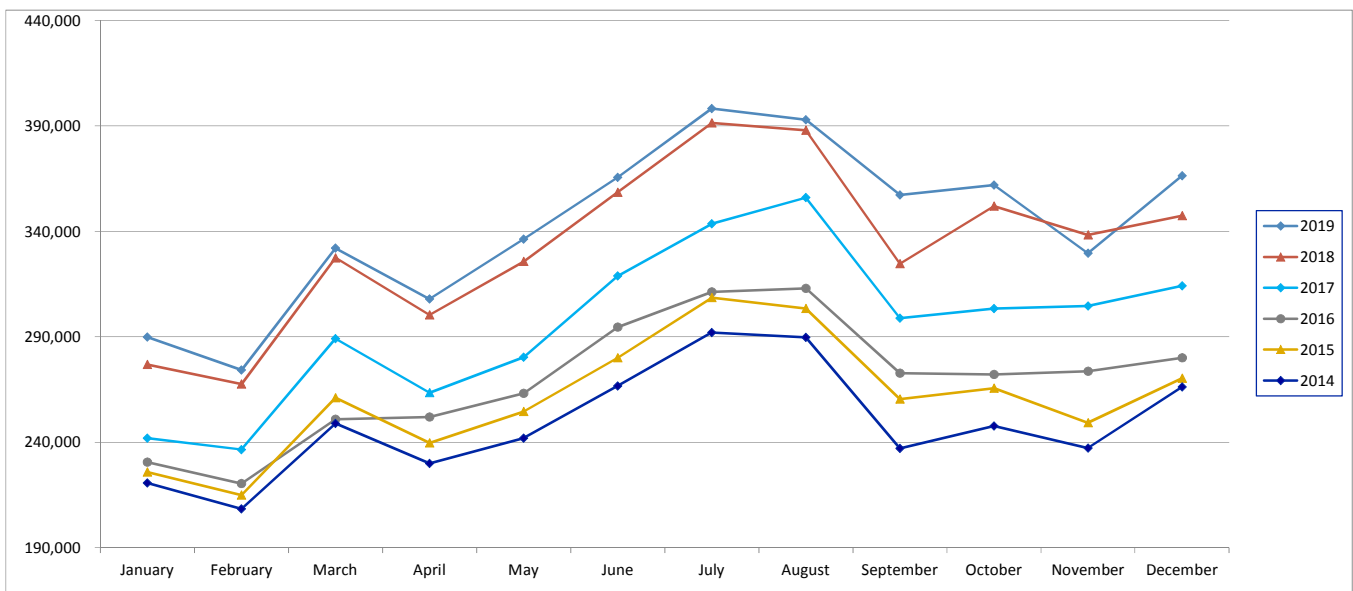
Operations activity is reported by the FEDERAL AVIATION ADMINISTRATION



SPOKANE INTERNATIONAL AIRPORT
MONTHLY TRAFFIC REPORT
December-19
TOTAL PASSENGER TRAFFIC COMPARISON

| | 2019 | Percent difference | 2018 | 2017 | 2016 | 2015 | 2014 |
|-----------------------------|------------------|--------------------|------------------|------------------|------------------|------------------|------------------|
| <i>January</i> | 289,904 | 4.73% | 276,824 | 241,898 | 230,576 | 225,785 | 220,737 |
| <i>February</i> | 274,228 | 2.50% | 267,542 | 236,534 | 220,343 | 214,933 | 208,435 |
| <i>March</i> | 332,082 | 1.41% | 327,459 | 289,191 | 250,881 | 260,984 | 248,904 |
| <i>April</i> | 308,009 | 2.54% | 300,371 | 263,463 | 251,955 | 239,603 | 229,989 |
| <i>May</i> | 336,265 | 3.25% | 325,695 | 280,274 | 263,144 | 254,499 | 241,870 |
| <i>June</i> | 365,625 | 1.97% | 358,570 | 318,891 | 294,561 | 280,098 | 266,701 |
| <i>July</i> | 398,323 | 1.76% | 391,420 | 343,599 | 311,274 | 308,500 | 292,025 |
| <i>August</i> | 393,005 | 1.30% | 387,949 | 356,008 | 313,002 | 303,403 | 289,713 |
| <i>September</i> | 357,241 | 10.04% | 324,647 | 298,781 | 272,675 | 260,439 | 237,078 |
| <i>October</i> | 362,046 | 2.85% | 352,028 | 303,464 | 272,060 | 265,563 | 247,679 |
| <i>November</i> | 329,723 | -2.54% | 338,306 | 304,566 | 273,663 | 249,256 | 237,296 |
| <i>December</i> | 366,333 | 5.43% | 347,461 | 314,243 | 279,961 | 270,279 | 266,225 |
| Total Passengers YTD | 4,112,784 | 2.86% | 3,998,272 | 3,550,912 | 3,234,095 | 3,133,342 | 2,986,652 |

COMPARISON OF TOTAL PASSENGERS





SPOKANE INTERNATIONAL AIRPORT
MONTHLY TRAFFIC REPORT
AIRLINE PASSENGER STATISTICS
December-19

| | <i>Enplaned</i> | | | | <i>Deplaned</i> | | | |
|------------------------|-----------------|----------------|--------------|--------------|-----------------|----------------|--------------|--------------|
| | 2019 | 2018 | Diff | % Change | 2019 | 2018 | Diff | % Change |
| <i>Alaska</i> | 69,198 | 58,763 | 10,435 | 17.76% | 69,313 | 57,701 | 11,612 | 20.12% |
| <i>American</i> | 11,464 | 10,328 | 1,136 | 11.00% | 11,418 | 10,681 | 737 | 6.90% |
| <i>Delta</i> | 41,620 | 38,628 | 2,992 | 7.75% | 40,608 | 38,450 | 2,158 | 5.61% |
| <i>Frontier</i> | 3,751 | 2,835 | 916 | 32.31% | 3,817 | 2,814 | 1,003 | 35.64% |
| <i>Southwest</i> | 39,589 | 42,458 | (2,869) | -6.76% | 38,712 | 41,970 | (3,258) | -7.76% |
| <i>United Airlines</i> | 16,803 | 20,075 | (3,272) | -16.30% | 17,162 | 19,277 | (2,115) | -10.97% |
| <i>Charter*</i> | 1,443 | 1,810 | (367) | -20.28% | 1,435 | 1,671 | (236) | -14.12% |
| Grand Total | 183,868 | 174,897 | 8,971 | 5.13% | 182,465 | 172,564 | 9,901 | 5.74% |

Passenger activity reported by individual airlines

*Swift Airlines reported all 2019 passengers in December 2019

| | | |
|----------------------|----------------|---------|
| Total Passengers for | December, 2019 | 366,333 |
| Total Passengers for | December, 2018 | 347,461 |
| % Change Versus | December, 2018 | 5.43% |