



SPOKANE INTERNATIONAL AIRPORT MONTHLY TRAFFIC REPORT JANUARY 2017

	JANUARY				YEAR TO DATE			
	2017	2016	Increase (Decrease)	Percent Difference	2017	2016	Increase (Decrease)	Percent Difference
MAJOR AIRLINES:								
Passengers								
Enplaned	83,561	89,379	(5,818)	-6.51%	83,561	89,379	(5,818)	-6.51%
Deplaned	80,855	88,687	(7,832)	-8.83%	80,855	88,687	(7,832)	-8.83%
Sub-total	164,416	178,066	(13,650)	-7.67%	164,416	178,066	(13,650)	-7.67%
REGIONAL AIRLINES:								
Passengers								
Enplaned	37,975	26,161	11,814	45.16%	37,975	26,161	11,814	45.16%
Deplaned	39,507	26,349	13,158	49.94%	39,507	26,349	13,158	49.94%
Sub-total	77,482	52,510	24,972	47.56%	77,482	52,510	24,972	47.56%
TOTAL PASSENGERS	241,898	230,576	11,322	4.91%	241,898	230,576	11,322	4.91%
CARGO: Enplaned	4,418,752.00	4,153,988.70	264,763	6.37%	4,418,752.00	4,153,988.70	264,763	6.37%
 Deplaned	6,499,203.00	6,145,878.30	353,325	5.75%	6,499,203.00	6,145,878.30	353,325	5.75%
TOTAL CARGO (in Pounds)	10,917,955.00	10,299,867.00	618,088	6.00%	10,917,955.00	10,299,867.00	618,088	6.00%

Passenger activity reported by individual airlines

MONTHLY AIRCRAFT ACTIVITY

	JANUARY				YEAR TO DATE			
	2017	2016	Increase (Decrease)	Percent Difference	2017	2016	Increase (Decrease)	Percent Difference
Major Airlines	3,234	2,896	338	11.67%	3,234	2,896	338	11.67%
Regional Airlines	565	515	50	9.71%	565	515	50	9.71%
General Aviation	401	539	(138)	-25.60%	401	539	(138)	-25.60%
Military	42	52	(10)	-19.23%	42	52	(10)	-19.23%
<i>Total Itinerant</i>	<i>4,242</i>	<i>4,002</i>	<i>240</i>	<i>6.00%</i>	<i>4,242</i>	<i>4,002</i>	<i>240</i>	<i>6.00%</i>
<i>Total Local</i>	<i>269</i>	<i>328</i>	<i>(59)</i>	<i>-17.99%</i>	<i>269</i>	<i>328</i>	<i>(59)</i>	<i>-17.99%</i>
TOTAL OPERATIONS	4,511	4,330	181	4.18%	4,511	4,330	181	4.18%

Operations activity is reported by the FEDERAL AVIATION ADMINISTRATION

	2017	2016	Increase (Decrease)	Percent Difference	2017	2016	Increase (Decrease)	Percent Difference
Felts Field Operations Total	2,791	1,855	936	50.46%	2,791	1,855	936	50.46%

Operations activity is reported by the FEDERAL AVIATION ADMINISTRATION



SPOKANE INTERNATIONAL AIRPORT MONTHLY TRAFFIC REPORT AIRLINE PASSENGER STATISTICS JANUARY 2017

Airline	JANUARY ENPLANEMENT DATA				JANUARY DEPLANEMENT DATA			
	2017	2016	Diff	% change	2017	2016	Diff	% change
<i>Alaska</i>	16,926	27,456	(10,530)	-38.35%	14,316	26,398	(12,082)	-45.77%
<i>American*</i>	6,520	4,037	2,483	61.51%	6,649	3,849	2,800	72.75%
<i>Delta</i>	25,278	25,146	132	0.52%	25,210	25,284	(74)	-0.29%
<i>Horizon</i>	37,975	26,161	11,814	45.16%	39,507	26,349	13,158	49.94%
<i>Southwest</i>	27,302	25,235	2,067	8.19%	26,982	25,415	1,567	6.17%
<i>United Airlines</i>	7,491	7,320	171	2.34%	7,579	7,557	22	0.29%
<i>Other</i>	-	-	-	100%	-	-	-	100.00%
<i>Charters</i>	44	185	(141)	0.00%	119	184	(65)	100.00%
Total Passengers	121,536	115,540	5,996	5.19%	120,362	115,036	5,326	4.63%

Passenger activity reported by individual airlines

* U. S. Airways was purchased by American Airlines and is reported under American Airlines going forward.

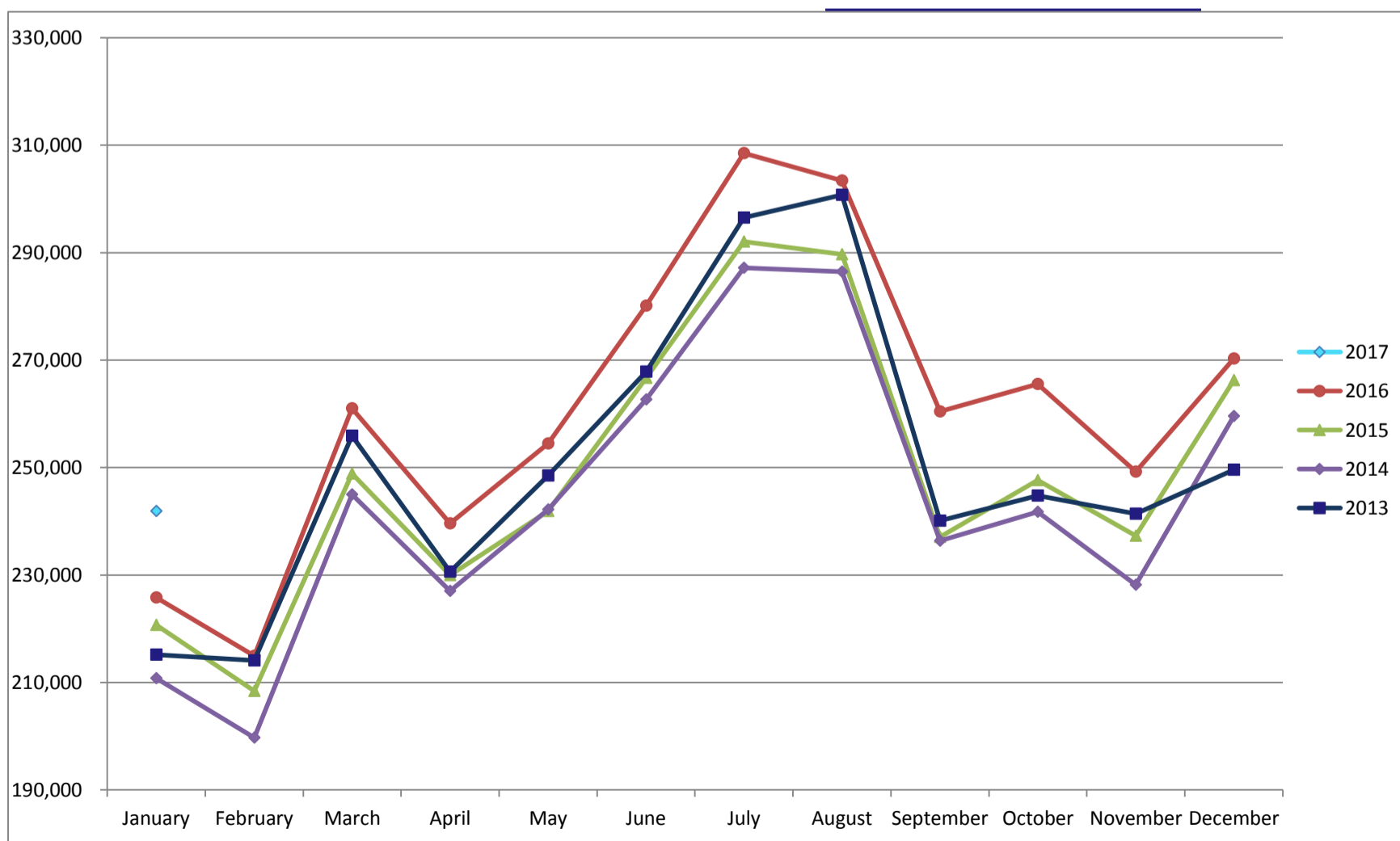
Total Passengers for JANUARY 2017	241,898
Total Passengers for JANUARY 2016	230,576
% Change Versus JANUARY 2016	4.91%



SPOKANE INTERNATIONAL AIRPORT MONTHLY TRAFFIC REPORT JANUARY 2017 TOTAL PASSENGER TRAFFIC COMPARISON

	2017	Percent difference	2016	2015	2014	2013
January	241,898	4.91%	230,576	225,785	220,737	210,770
February			220,343	214,933	208,435	199,694
March			250,881	260,984	248,904	245,021
April			251,955	239,603	229,989	227,005
May			263,144	254,499	241,870	242,208
June			294,561	280,098	266,701	262,638
July			311,274	308,500	292,025	287,204
August			313,002	303,403	289,713	286,417
September			272,675	260,439	237,078	236,363
October			272,060	265,563	247,679	241,776
November			273,663	249,256	237,296	228,168
December			279,961	270,279	266,225	259,594
Total Passengers YTD	241,898	4.91%	230,576	225,785	220,737	210,770

COMPARISON OF TOTAL PASSENGERS



Passenger activity reported by individual airlines