



**SPOKANE**  
INTERNATIONAL AIRPORT

# East Terminal Ramp RON Aircraft Parking Project

RFQ Informational Meeting  
January 23, 2020



## Informational Items

- SOQs will be received by the Spokane Airport Board no later than 2:00 p.m. on Friday, February 14, 2020 (4 hard copies, 1 thumb drive in pdf format)
- Follow submittal requirements and format as identified in RFQ.
- Questions shall be directed to [lcorcoran@spokaneairports.net](mailto:lcorcoran@spokaneairports.net)
- Firms are advised to familiarize themselves with the Airport's PSA and be prepared to accept without modification to the terms and conditions. The selected consultant will be expected to execute the Airport's PSA.
- It is anticipated the PSA will be awarded at the April 2020 Board Meeting.

# SPOKANE

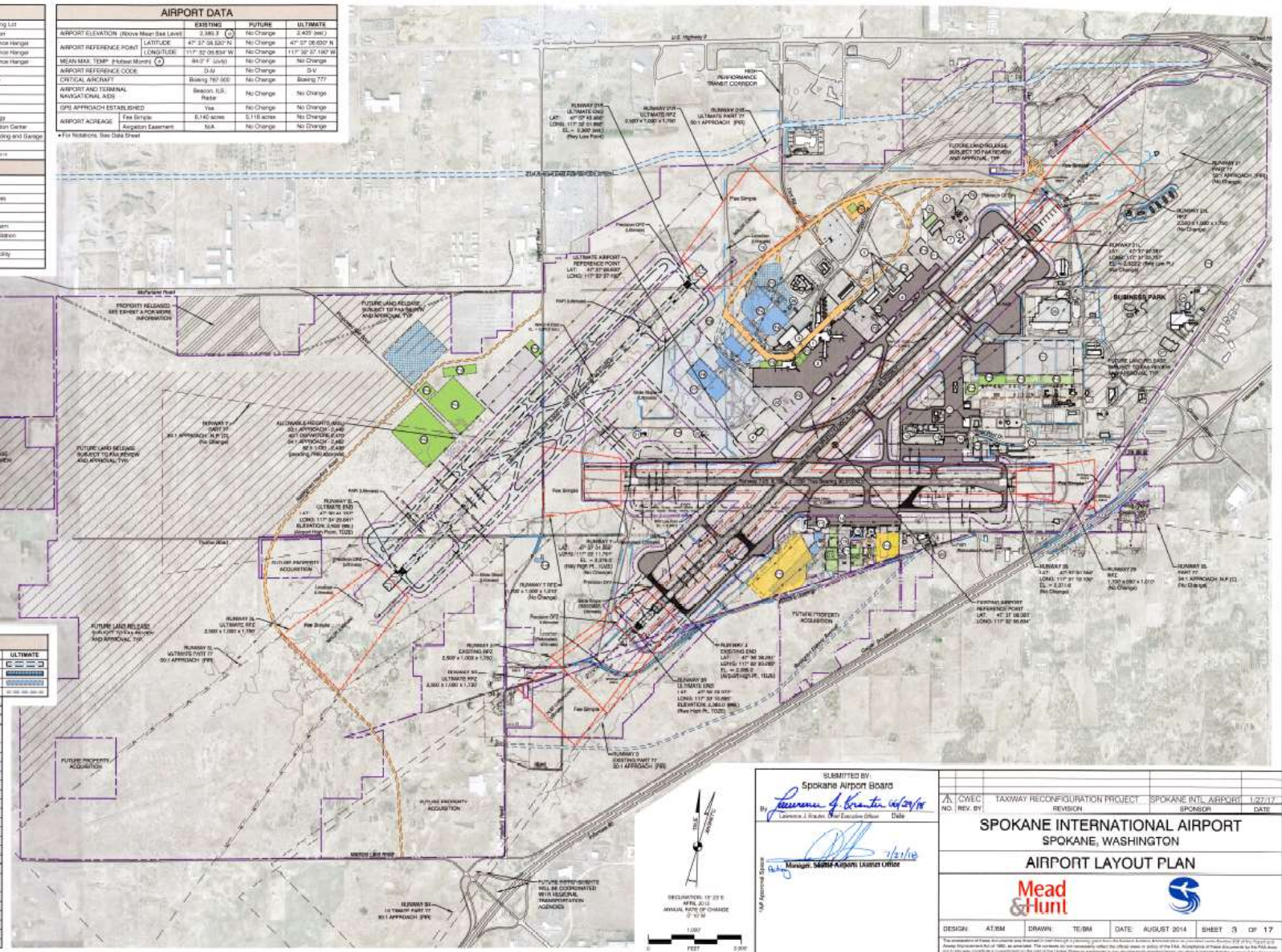
INTERNATIONAL AIRPORT

EXISTING FACILITY LEGEND	
Terminal	Control Tower
Air Control Tower	Security Screening
Terminal Parking Garage	Aeronautical / Maintenance Hangar
Airport Rescue and Fire Fighting	Aeronautical / Maintenance Hangar
Air Cargo	Aeronautical / Maintenance Hangar
West Cargo Apron	Army National Guard
Operations Building	Air Traffic Control Tower
Fuel Farm	ITIS Airbase Farm
Oil Fuel Storage	Regulator Building
Service Recovery Equipment Building	Regulator Building
Aeronautical / Maintenance Hangar	Residual Waste to Energy
ITIS	USPH Regional Distribution Center
Aeronautical / Maintenance Hangar	Training Operations Building and Garage
US Customs	US Customs

AIRPORT DATA			
	EXISTING	FUTURE	ULTIMATE
AIRPORT ELEVATION (above Mean Sea Level)	3,365.3'	No Change	2,800' (MSL)
AIRPORT REFERENCE POINT	47° 37' 28.530" N	No Change	47° 37' 28.530" N
LONGITUDE	117° 32' 29.834" W	No Change	117° 32' 37' 140" W
MEAN SEA LEVEL Pressure Meters	940.2' (286m)	No Change	No Change
AIRPORT REFERENCE CODE	04	No Change	04
CRITICAL AIRCRAFT	Boeing 747-300	No Change	Boeing 777
AIRPORT AND TERMINAL NATIONALITY AISC	Beacon, U.S.	No Change	No Change
UPS APPROACH ESTABLISHED	Yes	No Change	No Change
AIRPORT ACRES	5,140 acres	5,118 acres	No Change
Acquisition Easement	N/A	No Change	No Change

FUTURE FACILITY LEGEND	
Boeing Apron	Cargo/RFQ Apron
Expanded Passenger Terminal - Future	Expanded US Customs
Passenger Terminal Parking Garages	Future Aeronautical Facilities
Passenger Terminal Surface Parking	Hangar (180 x 260')
Passenger Terminal Ultimate	Recycled Electron Vault
Air Center Apron Ultimate	Recycled RFA Airbase Farm
T-Hangars	Concessions / Gas Station
Fuel Farm Upgrade	Air Traffic Control Tower
Cargo/Aeronautical Facilities	Recycled Concessional Facility

DRAWING LEGEND			
	EXISTING	FUTURE	ULTIMATE
Active Airside Pavement	██████████	██████████	██████████
Asphalt Pavement To Be Removed	N/A	██████████	██████████
Building - To Be Removed	██████████	██████████	██████████
Building - In Use	██████████	██████████	██████████
Special Road	██████████	██████████	██████████
Airport Property	██████████	██████████	██████████
Released Airport Property	██████████	██████████	██████████
Airport Reference Point	○	○	○
Runway Safety Area (RSA)	██████████	██████████	██████████
Runway Object Free Area (ROFA)	██████████	██████████	██████████
Runway Protection Zone (RPZ)	██████████	██████████	██████████
Runway (Class I) Free Area (RFA)	██████████	██████████	██████████
Building Reference Line (BRL)	██████████	██████████	██████████
Runway Visual Edge (RVE)	██████████	██████████	██████████
Class I/II Visual Approach Slope	██████████	██████████	██████████
OBAS Slope	██████████	██████████	██████████
Lighting	██████████	██████████	██████████
Slide Show Frame Area	██████████	██████████	██████████
Location Circular Area	██████████	██████████	██████████
Proposed Approach Path Indicator (PAI)	██████████	██████████	██████████
Visual Approach Slope Indicator (VASI)	██████████	██████████	██████████
Wind Cone	██████████	██████████	██████████
Holding Position	██████████	██████████	██████████
Fence	██████████	██████████	██████████
Building - Off Airport	██████████	██████████	██████████
Building - To Be Removed	██████████	██████████	██████████
100' Buffer Contour	██████████	██████████	██████████
WMP/WAP/WLBS	██████████	██████████	██████████
Future Airfield/Future FMS/MS	██████████	██████████	██████████
Acquisition To Be Done Parking	██████████	██████████	██████████
Transfer Station	██████████	██████████	██████████



SUBMITTED BY  
Spokane Airport Board  
By *Deanna J. Grant* 04/20/14  
Deanna J. Grant, Manager, Spokane Airport Liaison Office

NO.	DATE	REVISION	BY	DATE
1	08/01/14	TAXIWAY RECONFIGURATION PROJECT	AW	08/01/14
2	08/01/14	REVISION	AW	08/01/14

AW: C/VEC  
NO. REV. BY

**SPOKANE INTERNATIONAL AIRPORT**  
SPOKANE, WASHINGTON

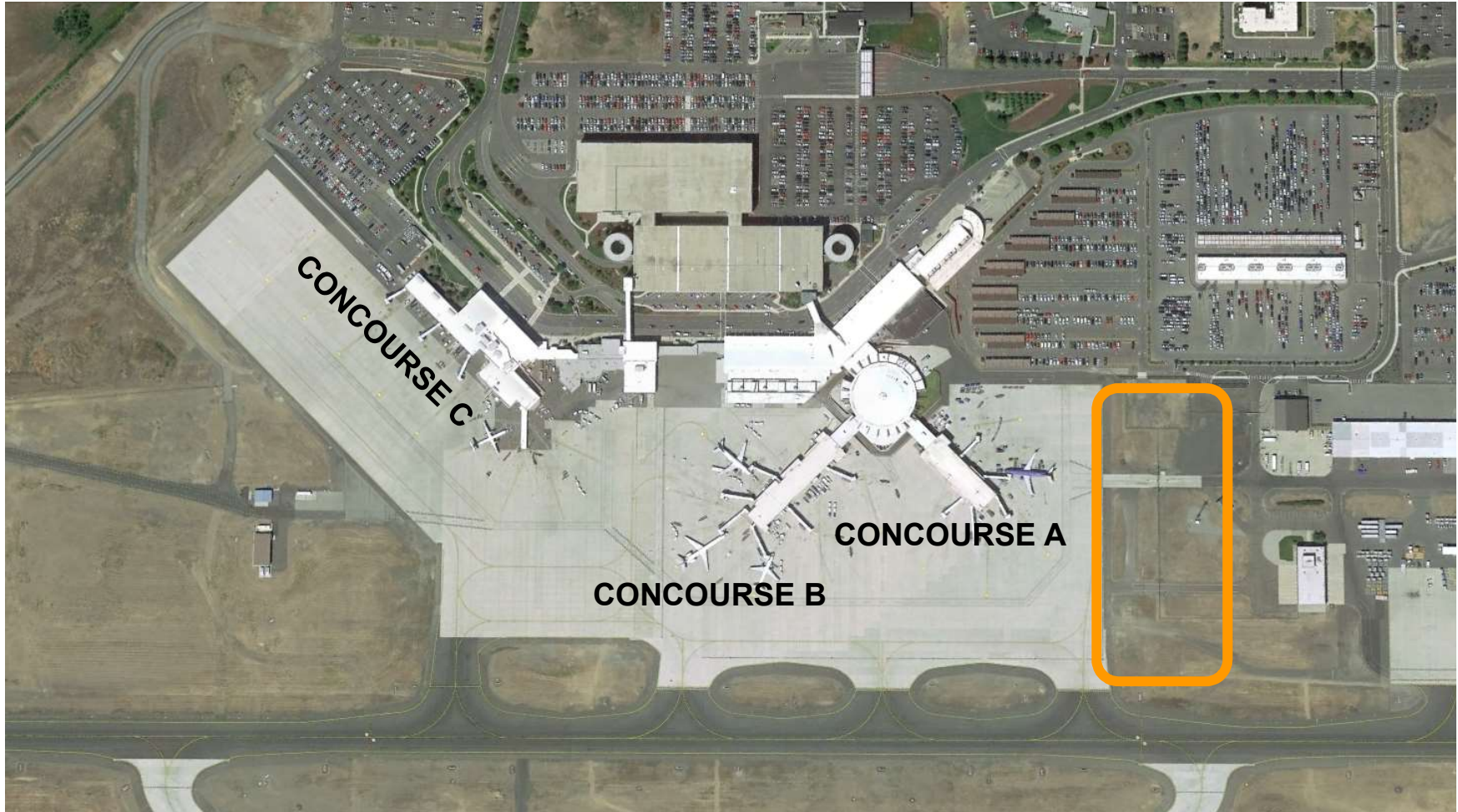
**AIRPORT LAYOUT PLAN**

**Mead & Hunt**

DESIGN: AT/AM DRAWN: TE/AM DATE: AUGUST 2014 SHEET: 3 OF 17

# SPOKANE

INTERNATIONAL AIRPORT



# SPOKANE

INTERNATIONAL AIRPORT



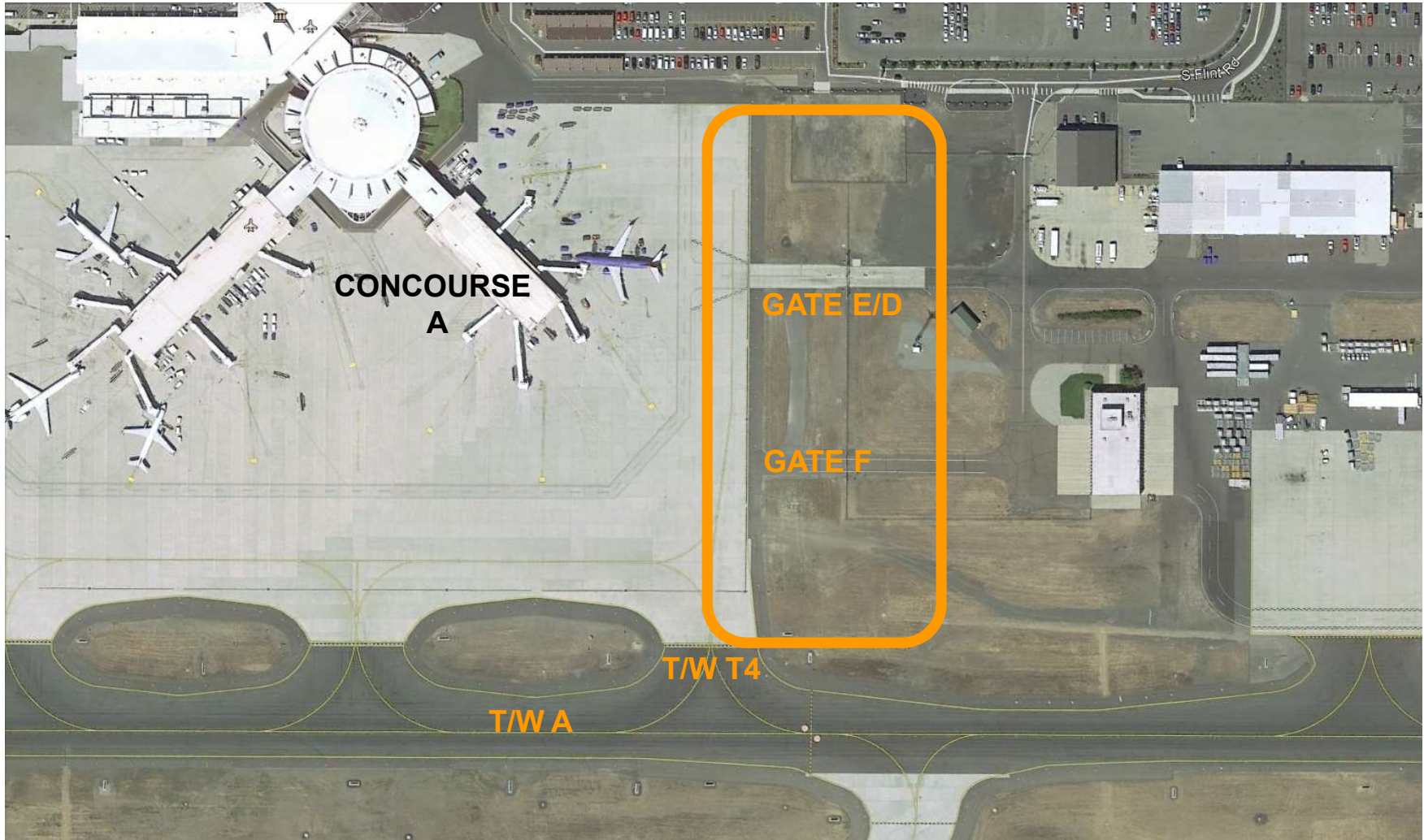
# SPOKANE

INTERNATIONAL AIRPORT



# SPOKANE

INTERNATIONAL AIRPORT



## Scope of Work

- Includes civil, geotechnical, and electrical engineering, survey, environmental, construction management/administration and all other necessary professional services to complete the project
- Federal funding is anticipated through the FAA AIP.
- Design and phasing shall follow and comply with the most current versions of the Federal Aviation Administration (FAA) Airport Improvement Program (AIP) Handbook Order and Advisory Circulars (ACs) for design standards and construction specifications.
- Construction management and construction administration services will either be amended to the SOW or contracted under a separate agreement.

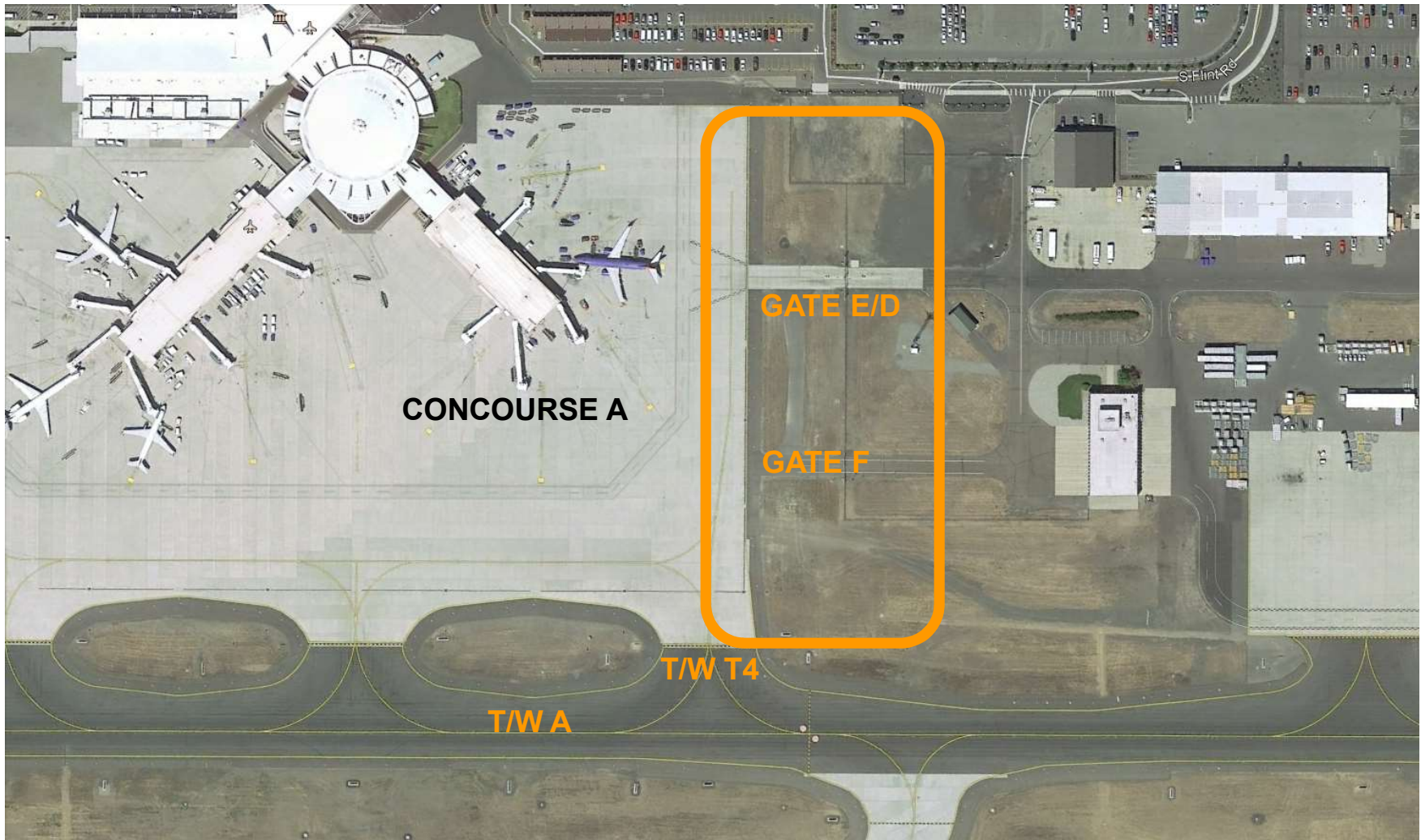


## Statement of Qualifications

- Specific Relevant Projects
- Project Organization and Staff Experience
- Project Understanding and Approach
- FAA Familiarity
  - Funding is anticipated through the Federal Aviation Administration (FAA) - Airport Improvement Program (AIP). The project shall follow the process and guidelines as identified in the AIP Handbook, Order 5100.38D.
- References

# SPOKANE

INTERNATIONAL AIRPORT





**Questions?**



**SPOKANE**  
INTERNATIONAL AIRPORT

**Thank You!**