



**SPOKANE**  
INTERNATIONAL AIRPORT

# Taxiway A Improvement Project

RFQ Informational Meeting

July 11, 2019



## Informational Items

- SOQs will be received by the Spokane Airport Board no later than 2:00 p.m. on Friday, August 2, 2019 (4 hard copies, 1 thumb drive in pdf format)
- Follow submittal requirements and format as identified in RFQ.
- Questions shall be directed to [lcocoran@spokaneairports.net](mailto:lcocoran@spokaneairports.net)
- Firms are advised to familiarize themselves with the Airport's PSA and be prepared to accept without modification to the terms and conditions. The selected consultant will be expected to execute the Airport's PSA.
- It is anticipated the PSA will be awarded at the September 2019 Board Meeting.

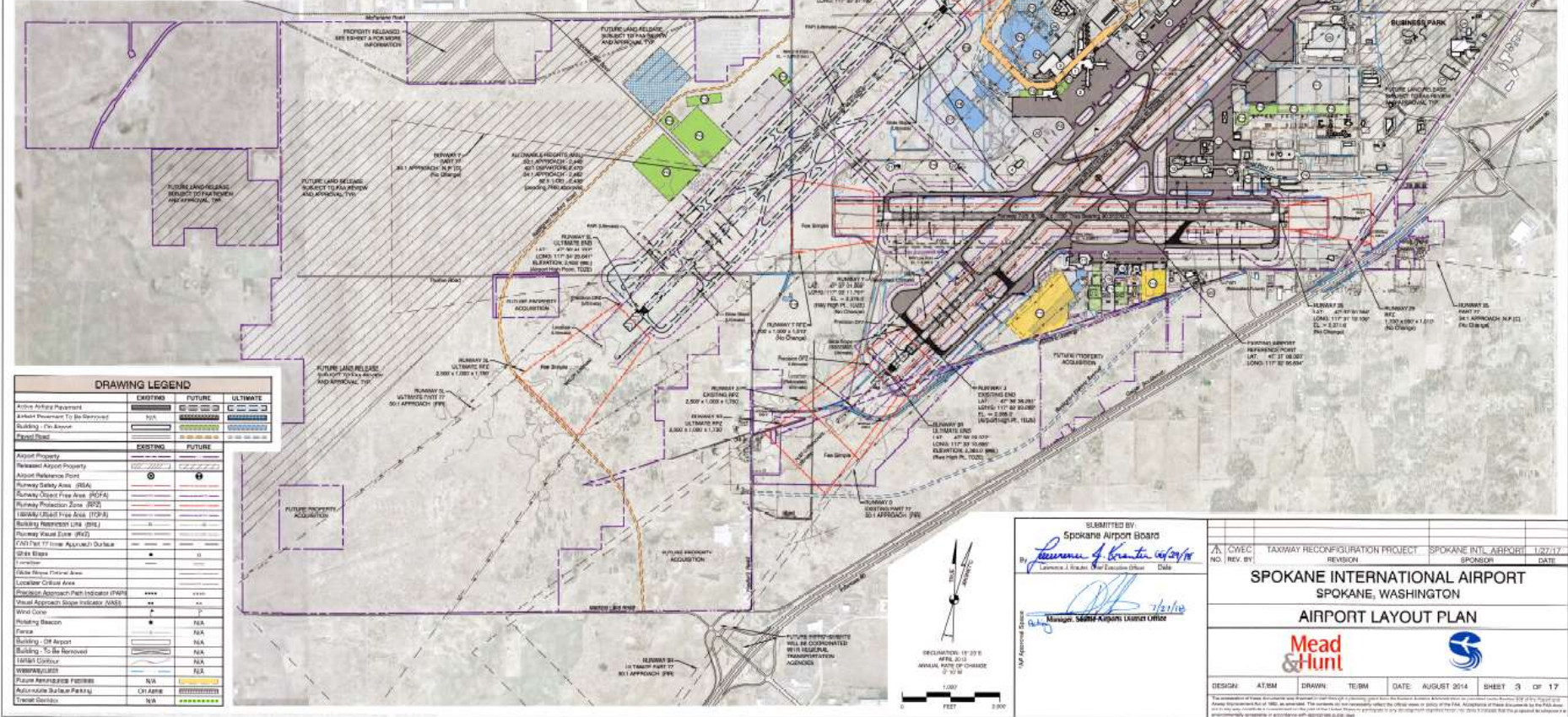


# SPOKANE INTERNATIONAL AIRPORT

EXISTING FACILITY LEGEND	
Terminal	Control Tower
Air Cargo Apron	Qantas Maintenance Apron
Terminal Parking Garage	Aeronautical / Maintenance Hangar
Airport Rescue and Fire Fighting	Aeronautical / Maintenance Hangar
Air Cargo	Aeronautical / Maintenance Hangar
West Cargo Apron	Army National Guard
Operations Building	Air Traffic Control Tower
Fuel Farm	F4U A68's Radar
Oil Fuel Storage	OTIS Airline Farm
Service Retrieval Equipment Building	Regulator Building
Aeronautical / Maintenance Hangar	Residual Waste to Energy
F4U	USPH Regional Distribution Center
Aeronautical / Maintenance Hangar	Training Operations Building and Garage
US Customs	SMF

AIRPORT DATA			
	EXISTING	FUTURE	ULTIMATE
AIRPORT ELEVATION (above Mean Sea Level)	2,365.3'	No Change	2,400' (MSL)
AIRPORT REFERENCE POINT	47° 37' 28.530" N	No Change	47° 37' 28.500" N
LONGITUDE	117° 32' 29.834" W	No Change	117° 32' 37' 140" W
MEAN SEA LEVEL Pressure (MSL)	840.0' (MSL)	No Change	No Change
AIRPORT REFERENCE CODE	03 47	No Change	03 47
CRITICAL AIRCRAFT	Boeing 747-300	No Change	Boeing 777
AIRPORT AND TERMINAL NATIONALITY AISC	Beacon, U.S.	No Change	No Change
UPS APPROACH ESTABLISHED	Yes	No Change	No Change
AIRPORT ACRES	5,140 acres	5,118 acres	No Change
ACQUISITION EASEMENT	N/A	No Change	No Change

FUTURE FACILITY LEGEND	
Boeing Apron	Cargo/MDG Apron
Expanded Passenger Terminal - Future	Expanded US Customs
Passenger Terminal Parking Garages	Future Aeronautical Facilities
Passenger Terminal Surface Parking	Hangar (180 x 260')
Passenger Terminal Ultimate	Residual Electronic Waste
Air Center Apron Ultimate	Residual RTR Airline Farm
T-Hangars	Concessions / Gas Station
Fuel Farm Upgrade	Air Traffic Control Tower
Cargo/Aeronautical Facilities	Residual Concessional Facility



DRAWING LEGEND			
	EXISTING	FUTURE	ULTIMATE
Active Airline Ramp	---	---	---
Airport Reservation To Be Reopened	N/A	---	---
Building - To Be Reopened	---	---	---
Building - In Use	---	---	---
Building - Proposed	---	---	---
Acquired Property	---	---	---
Released Airport Property	---	---	---
Airport Reference Point	---	---	---
Runway Safety Area (RSA)	---	---	---
Runway Object Free Area (ROFA)	---	---	---
Runway Protection Zone (RPZ)	---	---	---
Runway End Safety Area (RESA)	---	---	---
Building Reservation Line (BRL)	---	---	---
Runway Visual Range (RVR)	---	---	---
Class II or III Visual Approach Slope	---	---	---
OBAS Slope	---	---	---
Lighting	---	---	---
Oblique View Photo Area	---	---	---
Location Control Area	---	---	---
Proposed Approach Path Indicator (PAI)	---	---	---
Visual Approach Slope Indicator (VASI)	---	---	---
Wind Cone	---	---	---
Holding Position	N/A	---	---
Fence	N/A	---	---
Building - Off Airport	N/A	---	---
Building - To Be Reopened	N/A	---	---
Building - In Use	N/A	---	---
Building - Proposed	N/A	---	---
Warehouse/Storage	N/A	---	---
Future Airfield/Facility	N/A	---	---
Acquisition To Be Reopened	N/A	---	---
Transfer Control	N/A	---	---

SUBMITTED BY  
Spokane Airport Board  
By: *[Signature]*  
Lorraine J. Smith, Vice President  
Date: *[Date]*  
Manager: *[Signature]*  
Spokane Airport Liaison Office

A/CWEC NO. REV. BY	TAXWAY RECONFIGURATION PROJECT	SPOKANE INTL. AIRPORT	1/22/17
	REVISION	SPONSOR	DATE
<b>SPOKANE INTERNATIONAL AIRPORT</b> SPOKANE, WASHINGTON			
<b>AIRPORT LAYOUT PLAN</b>			
<b>Mead &amp; Hunt</b>			
DESIGN: AT/AM	DRAWN: TE/AM	DATE: AUGUST 2014	SHEET 3 OF 17





# SPOKANE

INTERNATIONAL AIRPORT







# SPOKANE

INTERNATIONAL AIRPORT





# SPOKANE

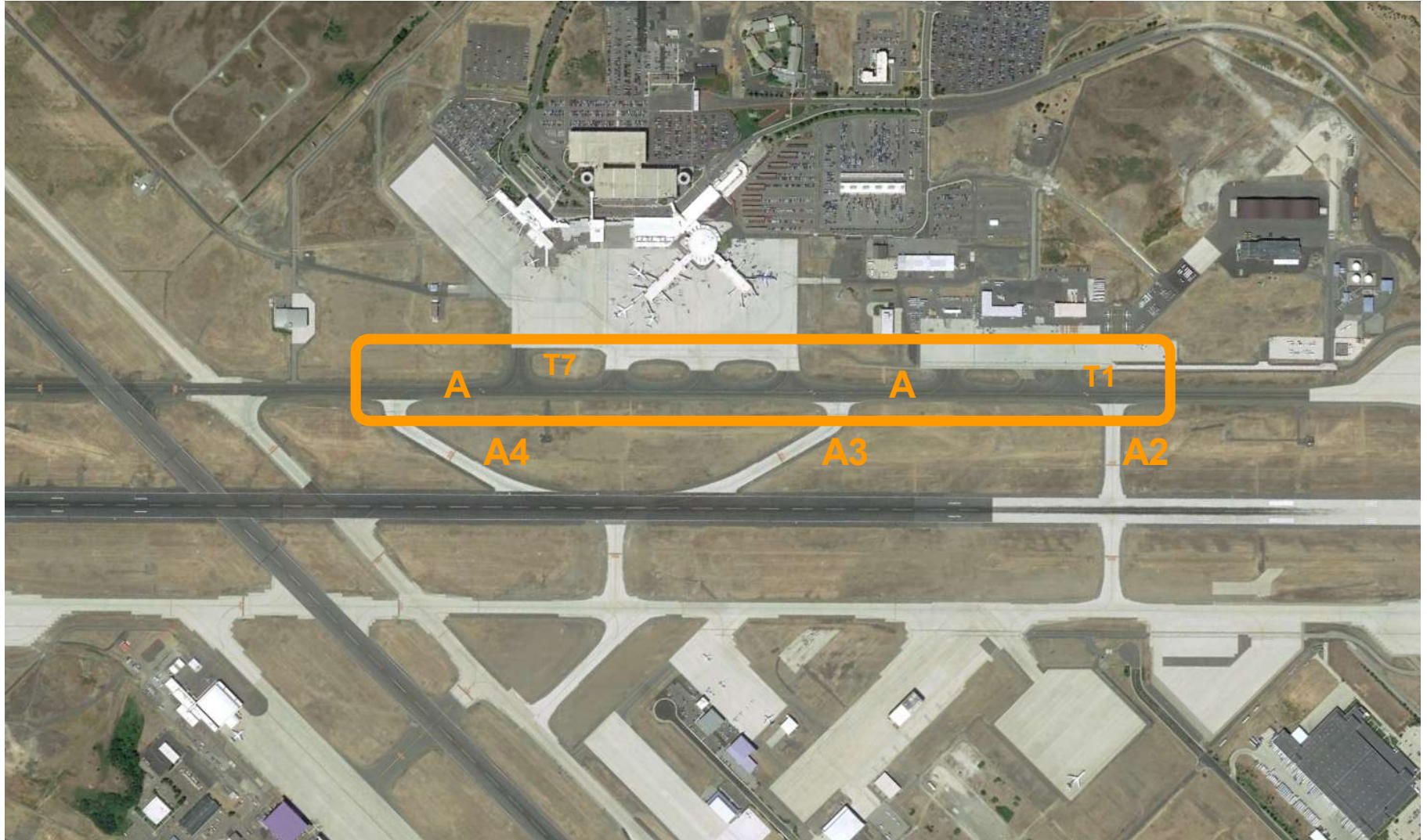
INTERNATIONAL AIRPORT





# SPOKANE

INTERNATIONAL AIRPORT



## Scope of Work

- Includes civil, geotechnical, and electrical engineering, survey, construction management/administration and all other necessary professional services to complete the project
- T/W A pavement experiencing distresses:
  - longitudinal and transverse cracking
  - Shoving and slippage
  - Rutting
- Evaluate existing pavement sections
  - T/W A, from approximately T/W A2 to Taxiway A4
  - Includes interconnecting T/W T1 to T7
- Evaluation results will be used to determine the type and extent of reconstruction needed



## Scope of Work

- Federal funding is anticipated through the FAA AIP.
- Design and phasing shall follow and comply with the most current versions of the Federal Aviation Administration (FAA) Airport Improvement Program (AIP) Handbook Order and Advisory Circulars (ACs) for design standards and construction specifications.
- Construction management and construction administration services will either be amended to the SOW or contracted under a separate agreement.



# SPOKANE

INTERNATIONAL AIRPORT





# SPOKANE

INTERNATIONAL AIRPORT





# SPOKANE

INTERNATIONAL AIRPORT





# SPOKANE

INTERNATIONAL AIRPORT





## Statement of Qualifications

- Specific Relevant Projects
- Project Organization and Staff Experience
- Project Understanding and Approach
- FAA Familiarity
  - Funding is anticipated through the Federal Aviation Administration (FAA) - Airport Improvement Program (AIP). The project shall follow the process and guidelines as identified in the AIP Handbook, Order 5100.38D.
- References



Questions?





**SPOKANE**  
INTERNATIONAL AIRPORT

**Thank You!**