



## SPOKANE INTERNATIONAL AIRPORT MONTHLY TRAFFIC REPORT February-21

	February				YEAR TO DATE			
	2021	2020	Increase (Decrease)	Percent Difference	2021	2020	Increase (Decrease)	Percent Difference
<b>MAJOR AIRLINES:</b>								
Passengers								
Enplaned	77,317	148,325	(71,008)	-47.87%	148,902	301,954	(153,052)	-50.69%
Deplaned	74,198	148,882	(74,684)	-50.16%	145,028	299,814	(154,786)	-51.63%
<b>TOTAL PASSENGERS</b>	<b>151,515</b>	<b>297,207</b>	<b>(145,692)</b>	<b>-49.02%</b>	<b>293,930</b>	<b>601,768</b>	<b>(307,838)</b>	<b>-51.16%</b>
<b>CARGO:</b>								
Enplaned	4,109,336	3,868,476	240,860	6.23%	9,083,300	7,917,192	1,166,108	14.73%
Deplaned	5,987,401	6,154,363	(166,962)	-2.71%	13,499,413	13,109,168	390,245	2.98%
<b>TOTAL CARGO (in Pounds)</b>	<b>10,096,737</b>	<b>10,022,839</b>	<b>73,898</b>	<b>0.74%</b>	<b>22,582,713</b>	<b>21,026,360</b>	<b>1,556,353</b>	<b>7.40%</b>

Passenger and Cargo activity reported by individual carriers

### MONTHLY AIRCRAFT ACTIVITY

	February				YEAR TO DATE			
	2021	2020	Increase (Decrease)	Percent Difference	2021	2020	Increase (Decrease)	Percent Difference
Major Airlines	2,717	3,715	(998)	-26.86%	5,838	7,652	(1,814)	-23.71%
Regional Airlines	622	908	(286)	-31.50%	1,294	1,726	(432)	-25.03%
General Aviation	410	619	(209)	-33.76%	798	1,147	(349)	-30.43%
Military	62	129	(67)	-51.94%	102	165	(63)	-38.18%
<b>Total Itinerant</b>	<b>3,811</b>	<b>5,371</b>	<b>(1,560)</b>	<b>-29.04%</b>	<b>8,032</b>	<b>10,690</b>	<b>(2,658)</b>	<b>-24.86%</b>
<b>Total Local</b>	<b>230</b>	<b>587</b>	<b>(357)</b>	<b>-60.82%</b>	<b>512</b>	<b>719</b>	<b>(207)</b>	<b>-28.79%</b>
<b>TOTAL OPERATIONS</b>	<b>4,041</b>	<b>5,958</b>	<b>(1,917)</b>	<b>-32.18%</b>	<b>8,544</b>	<b>11,409</b>	<b>(2,865)</b>	<b>-25.11%</b>

Operations activity is reported by the FEDERAL AVIATION ADMINISTRATION

	2021	2020	Increase (Decrease)	Percent Difference	2021	2020	Increase (Decrease)	Percent Difference
Felts Field Operations Total	4,159	4,002	157	3.92%	8,186	6,805	1,381	20.29%

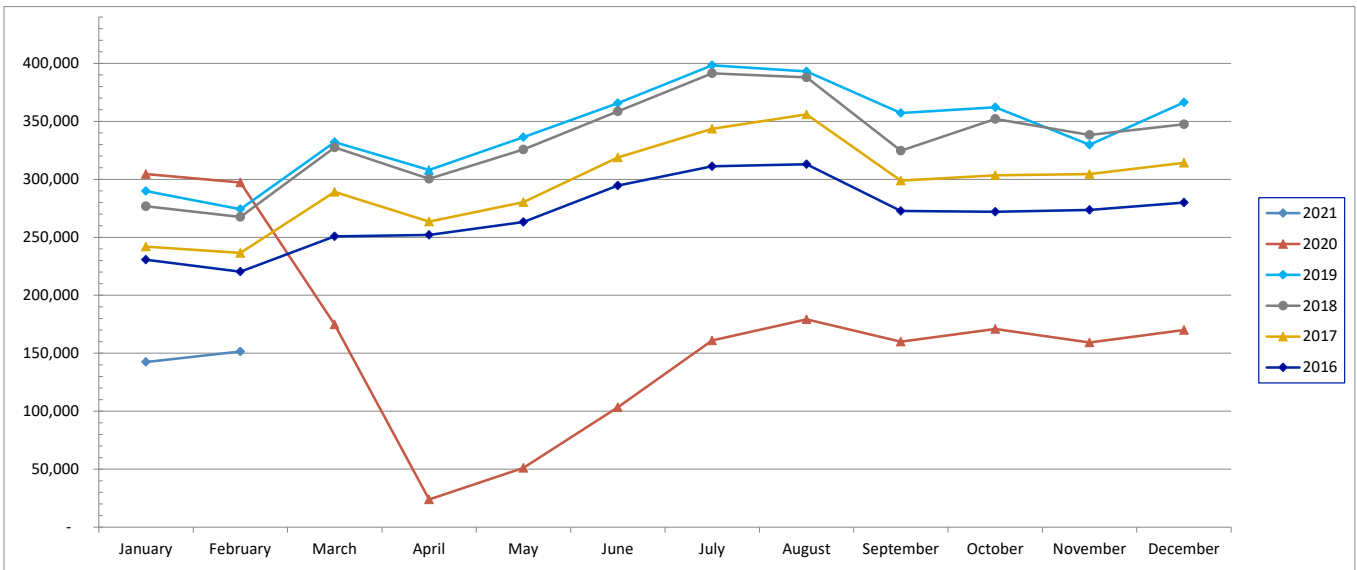
Operations activity is reported by the FEDERAL AVIATION ADMINISTRATION



# SPOKANE INTERNATIONAL AIRPORT MONTHLY TRAFFIC REPORT February-21 TOTAL PASSENGER TRAFFIC COMPARISON

	2021	Percent difference	2020	2019	2018	2017	2016
January	142,415	-53.24%	304,561	289,904	276,824	241,898	230,576
February	151,515	-49.02%	297,207	274,228	267,542	236,534	220,343
March			174,741	332,082	327,459	289,191	250,881
April			23,889	308,009	300,371	263,463	251,955
May			51,032	336,265	325,695	280,274	263,144
June			103,397	365,625	358,570	318,891	294,561
July			160,945	398,323	391,420	343,599	311,274
August			179,225	393,005	387,949	356,008	313,002
September			159,920	357,241	324,647	298,781	272,675
October			170,999	362,046	352,028	303,464	272,060
November			159,315	329,723	338,306	304,566	273,663
December			170,127	366,333	347,461	314,243	279,961
<b>Total Passengers YTD</b>	<b>293,930</b>	<b>-53.24%</b>	<b>1,955,358</b>	<b>4,112,784</b>	<b>3,998,272</b>	<b>3,550,912</b>	<b>3,234,095</b>

## COMPARISON OF TOTAL PASSENGERS





**SPOKANE INTERNATIONAL AIRPORT  
MONTHLY TRAFFIC REPORT  
AIRLINE PASSENGER STATISTICS  
February-21**

	<i>Enplaned</i>				<i>Deplaned</i>			
	2021	2020	Diff	% Change	2021	2020	Diff	% Change
<i>Alaska</i>	31,448	57,746	(26,298)	-45.54%	30,409	58,533	(28,124)	-48.05%
<i>Allegiant</i>	365	N/A	365	N/A	401	N/A	401	N/A
<i>American</i>	6,819	8,384	(1,565)	-18.67%	6,293	8,140	(1,847)	-22.69%
<i>Delta</i>	14,941	32,210	(17,269)	-53.61%	14,330	31,911	(17,581)	-55.09%
<i>Frontier</i>	630	2,582	(1,952)	-75.60%	775	3,109	(2,334)	-75.07%
<i>Southwest</i>	15,575	32,141	(16,566)	-51.54%	14,726	31,643	(16,917)	-53.46%
<i>United Airlines</i>	7,539	15,087	(7,548)	-50.03%	7,264	15,372	(8,108)	-52.75%
<i>Charter*</i>	0	175	(175)	-100.00%	0	174	(174)	-100.00%
<b>Grand Total</b>	<b>77,317</b>	<b>148,325</b>	<b>(71,008)</b>	<b>-47.87%</b>	<b>74,198</b>	<b>148,882</b>	<b>(74,684)</b>	<b>-50.16%</b>

Passenger activity reported by individual airlines

Total Passengers for	February, 2021	151,515
Total Passengers for	February, 2020	297,207
% Change Versus	February, 2020	-49.02%