



SPOKANE INTERNATIONAL AIRPORT MONTHLY TRAFFIC REPORT January-21

	January				YEAR TO DATE			
	2021	2020	Increase (Decrease)	Percent Difference	2021	2020	Increase (Decrease)	Percent Difference
MAJOR AIRLINES:								
Passengers								
Enplaned	71,585	153,629	(82,044)	-53.40%	71,585	153,629	(82,044)	-53.40%
Deplaned	70,830	150,932	(80,102)	-53.07%	70,830	150,932	(80,102)	-53.07%
TOTAL PASSENGERS	142,415	304,561	(162,146)	-53.24%	142,415	304,561	(162,146)	-53.24%
CARGO:								
Enplaned	4,973,964	4,048,716	925,248	22.85%	4,973,964	4,048,716	925,248	22.85%
Deplaned	7,512,012	6,954,805	557,207	8.01%	7,512,012	6,954,805	557,207	8.01%
TOTAL CARGO (in Pounds)	12,485,976	11,003,521	1,482,455	13.47%	12,485,976	11,003,521	1,482,455	13.47%

Passenger and Cargo activity reported by individual carriers

MONTHLY AIRCRAFT ACTIVITY

	January				YEAR TO DATE			
	2021	2020	Increase (Decrease)	Percent Difference	2021	2020	Increase (Decrease)	Percent Difference
Major Airlines	3,121	3,937	(816)	-20.73%	3,121	3,937	(816)	-20.73%
Regional Airlines	672	818	(146)	-17.85%	672	818	(146)	-17.85%
General Aviation	388	528	(140)	-26.52%	388	528	(140)	-26.52%
Military	40	36	4	11.11%	40	36	4	11.11%
Total Itinerant	4,221	5,319	(1,098)	-20.64%	4,221	5,319	(1,098)	-20.64%
Total Local	282	132	150	113.64%	282	132	150	113.64%
TOTAL OPERATIONS	4,503	5,451	(948)	-17.39%	4,503	5,451	(948)	-17.39%

Operations activity is reported by the FEDERAL AVIATION ADMINISTRATION

	2021	2020	Increase (Decrease)	Percent Difference	2021	2020	Increase (Decrease)	Percent Difference
Felts Field Operations Total	4,027	2,803	1,224	43.67%	4,027	2,803	1,224	43.67%

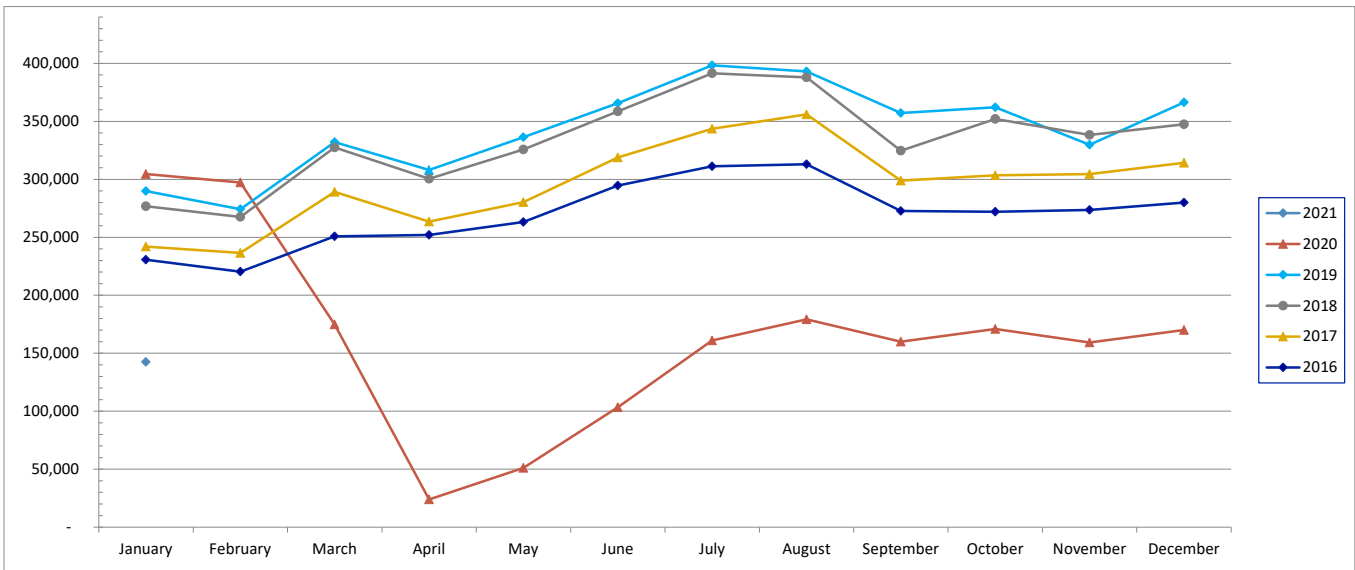
Operations activity is reported by the FEDERAL AVIATION ADMINISTRATION



SPOKANE INTERNATIONAL AIRPORT MONTHLY TRAFFIC REPORT January-21 TOTAL PASSENGER TRAFFIC COMPARISON

	2021	Percent difference	2020	2019	2018	2017	2016
January	142,415	-53.24%	304,561	289,904	276,824	241,898	230,576
February			297,207	274,228	267,542	236,534	220,343
March			174,741	332,082	327,459	289,191	250,881
April			23,889	308,009	300,371	263,463	251,955
May			51,032	336,265	325,695	280,274	263,144
June			103,397	365,625	358,570	318,891	294,561
July			160,945	398,323	391,420	343,599	311,274
August			179,225	393,005	387,949	356,008	313,002
September			159,920	357,241	324,647	298,781	272,675
October			170,999	362,046	352,028	303,464	272,060
November			159,315	329,723	338,306	304,566	273,663
December			170,127	366,333	347,461	314,243	279,961
Total Passengers YTD	142,415	-53.24%	1,955,358	4,112,784	3,998,272	3,550,912	3,234,095

COMPARISON OF TOTAL PASSENGERS





**SPOKANE INTERNATIONAL AIRPORT
MONTHLY TRAFFIC REPORT
AIRLINE PASSENGER STATISTICS
January-21**

	<i>Enplaned</i>				<i>Deplaned</i>			
	2021	2020	Diff	% Change	2021	2020	Diff	% Change
<i>Alaska</i>	26,434	61,625	(35,191)	-57.11%	26,456	59,812	(33,356)	-55.77%
<i>American</i>	7,155	8,230	(1,075)	-13.06%	7,499	7,751	(252)	-3.25%
<i>Delta</i>	14,597	33,639	(19,042)	-56.61%	13,988	33,637	(19,649)	-58.41%
<i>Frontier</i>	237	3,005	(2,768)	-92.11%	315	3,235	(2,920)	-90.26%
<i>Southwest</i>	15,911	32,890	(16,979)	-51.62%	15,344	31,681	(16,337)	-51.57%
<i>United Airlines</i>	7,251	14,168	(6,917)	-48.82%	7,228	14,744	(7,516)	-50.98%
<i>Charter*</i>	0	72	(72)	-100.00%	0	72	(72)	-100.00%
Grand Total	71,585	153,629	(82,044)	-53.40%	70,830	150,932	(80,102)	-53.07%

Passenger activity reported by individual airlines

Total Passengers for	January, 2021	142,415
Total Passengers for	January, 2020	304,561
% Change Versus	January, 2020	-53.24%